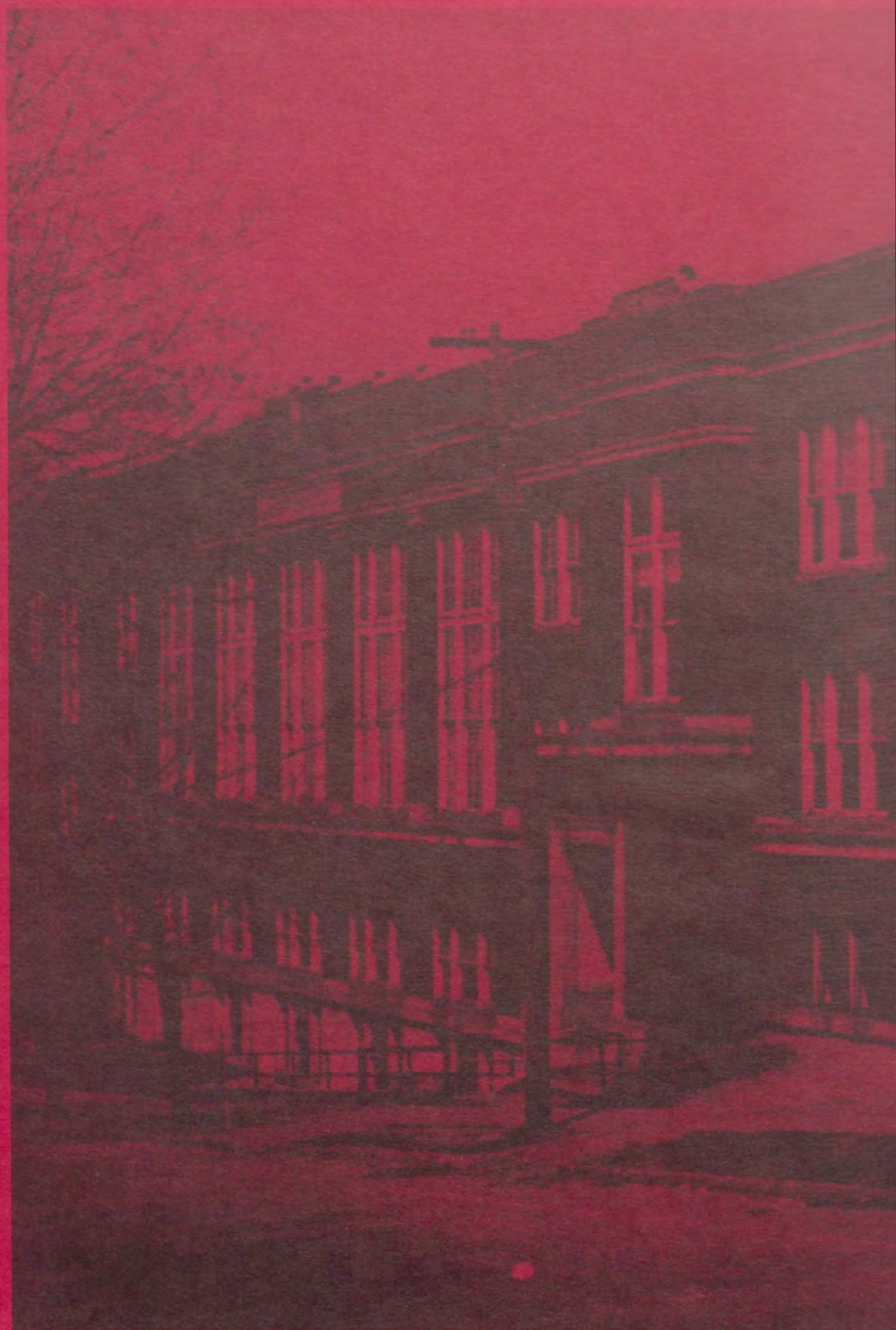
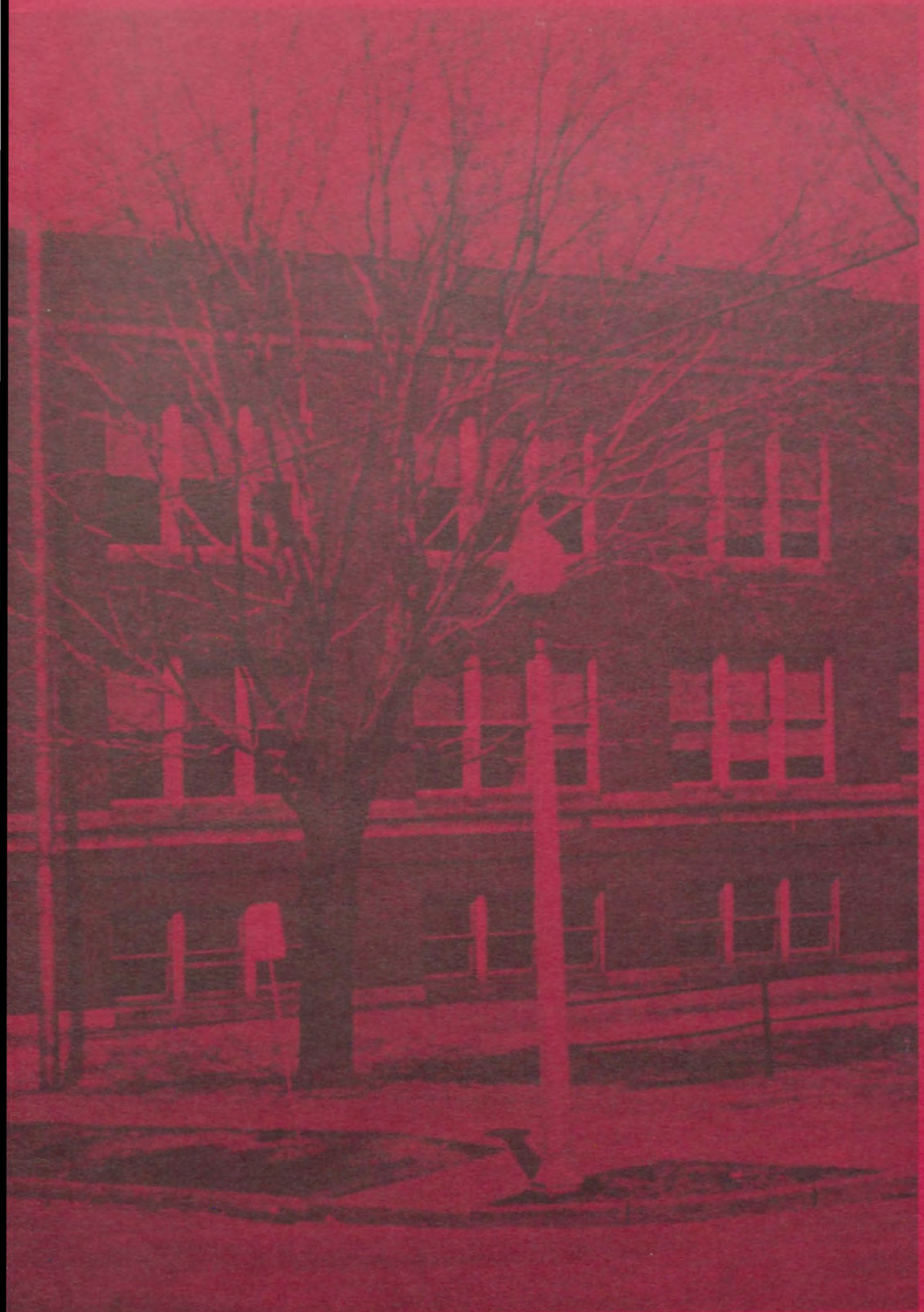
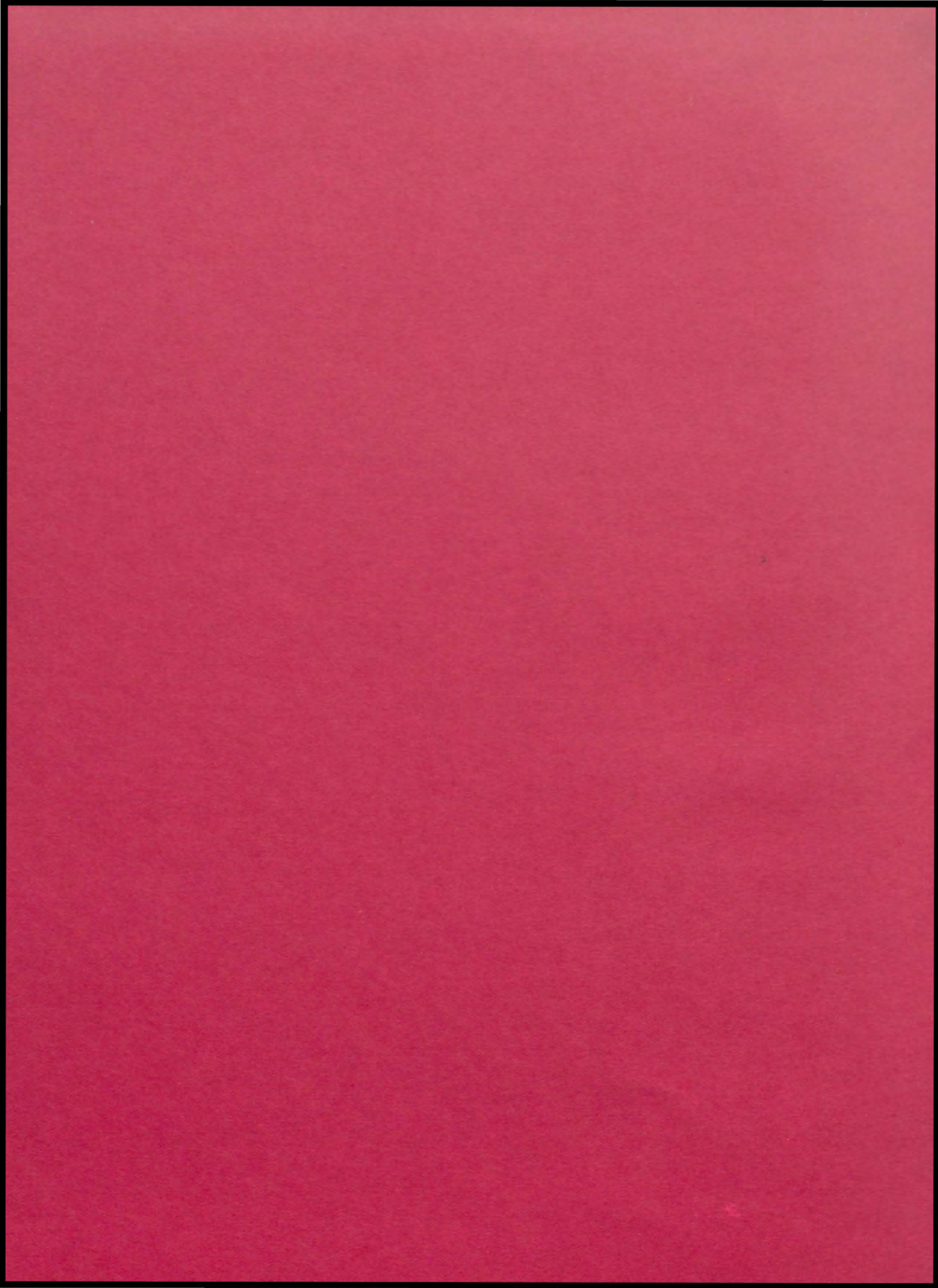


Joseph
1942









HI, FOLKS!

Let me introduce myself, seeing as there isn't
anyone else around . . .

I'm "PETE," The



1942

Petosegan

"Just A Regular Guy!"

I go to Petoskey High School and sure do have a grand time. Arlene Wurst planned and originated me while Pat Doherty is my Edgar Bergan. Pat Campbell managed all of my business and Russell Hinds sold me! Without the willingness and co-operation of many members of the staff and the careful advising of Mr. McDonald, I would not have been a success.

SAY! I'd like to show you around. Come on along. I'm on my way to school now.

Three Cheers for!
"An Apple for the Teacher."
After School There's Time for Play.
Special Delivery by Stork.
Well We Finally got Through.
Be a Sport-s-man.
I think I'll get it for Best
looking.

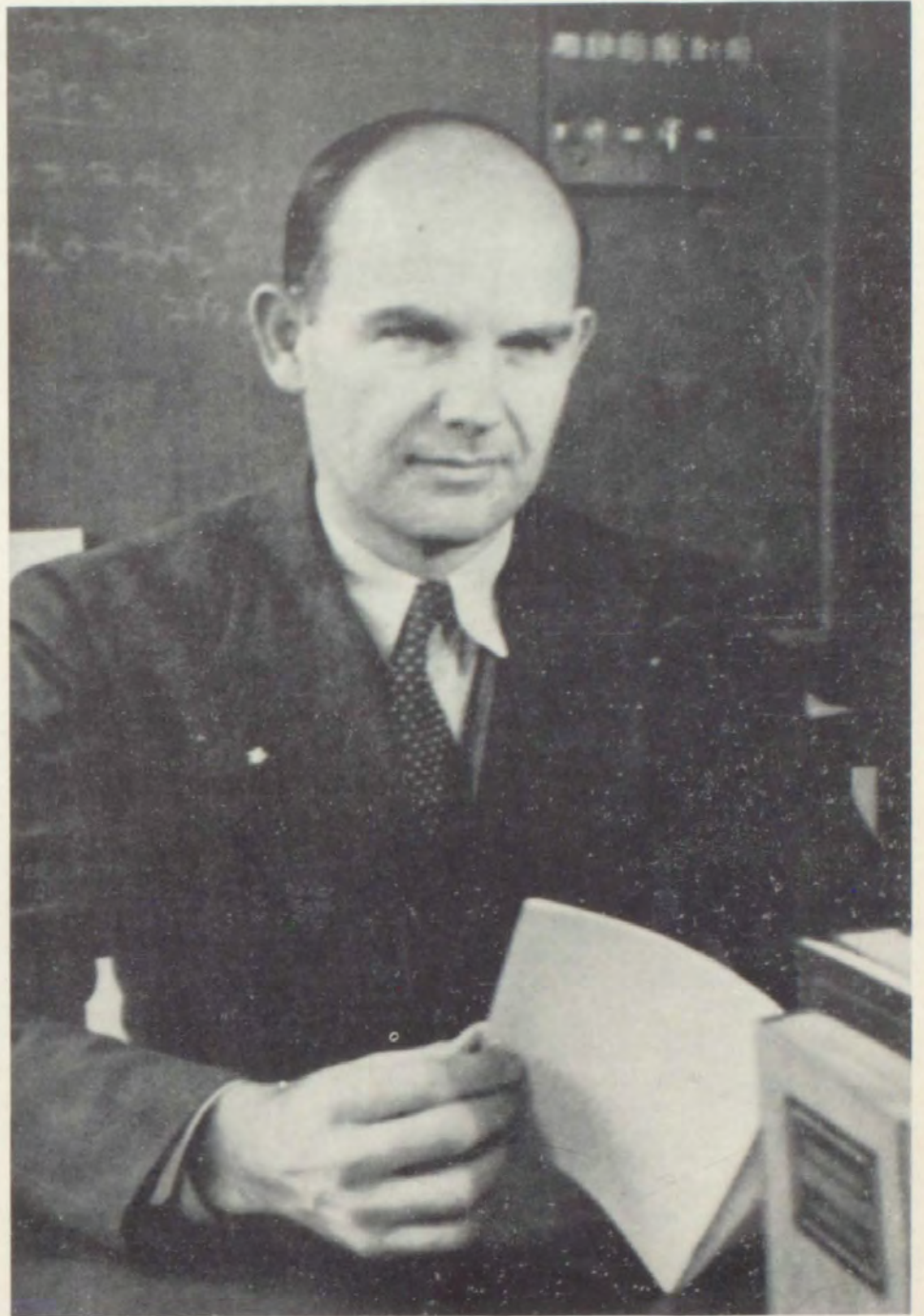
Here's an idea
of what I want
to show you.

CONTENTS

THREE

CHEERS

FOR



Coach Lynn Bartlett
for his big-hearted understanding of our
problems which helped us through our
high school years.

We study hard



Who's
absent
today?



Concentrating.



Cardy again?



Nothing like Learning Now!

Even the
Pencils
Get
dull!



Fundamentals of Mechanical drawing.



Blame it on the Romans!



from 9:00 to 4:15

The art class makes masks.



they Prepare our Food.

Typing class, hard at work.



they run our Picture machine.



they Get our books.

Study?

trig!





Sub-deb Dance



Economics class buys stocks.



3rd hour Algebra Class.



He snaps the pics.



Band in Formation!



Hughie

Looking For a Jap.



Shop class



Art class makes scenery

$$2 + 2 = 4$$

$$\begin{array}{r} + 3 \\ 3 \\ \hline 6 \end{array}$$



"AN APPLE FOR THE TEACHER"

He Superintends...



H. C. SPITLER
Superintendent

Our Principal...



FRANK S. JACOBS
Principal

Senior Class Advisers



ROSALIE A. STECH, A.B.
English—Dramatics



LYNN BARTLETT, A.B.
Science—Mathematics—Athletics



ARLENE D. VAN NESS, A.B.
History—Economic Geography

There's Those Teachers Again...



NELLIE I. BEEBE, A.B., A.M.
Latin—French



LINFORD B. BOND, A.B., M.S.
Physics—Mathematics



MRS. BURTON COLE, A.B.
English—Latin—Dramatics



MRS. RALPH FEATHER
Social Studies—English



MERRILL F. FINK, A.B., M.A.
Social Studies—English



OLA GAUMER, B.S.
Physical Education



WALTER W. HABERAECKER, B.M., Ed. M. Mus.
Instrumental Music Supervisor



HELEN E. HELRIGEL, A.B.
English



GRACE W. JESSOP
Opportunity Room



KATHLEEN KENNEDY, B.S.
Typing—Bookkeeping—Business Methods



EDWIN J. LOW, B.S.
Industrial Arts



JOHN F. McDONALD, A.B., M.A.
Social Sciences—Vocations—Journalism

And Again...



FRANCIS I. McDOWELL, A.B.
English—General Science—Social Science



WALTER JAMES MacMILLAN, B.S.
Physical Education—Civics



J. J. MIDDLESWORTH, A.B.
Athletic Coach—Physical Education



KENNETH E. MUSSON, B.S.
Apprenticeship Training



MIRIAM NICKLE, B.A.
Vocal Music Supervisor



FRANCES PAILTHORP
Art



ELAINE E. PAULSEN, B.S.
Shorthand—Typing—Office Practice



LESLIE PENGELLY, A.B.
Biology—Mathematics (left in April)



A. T. ROLPH, A.B.
English—Library—Debate Coach



MARY JANE SCHREUR, A.B.
Mathematics



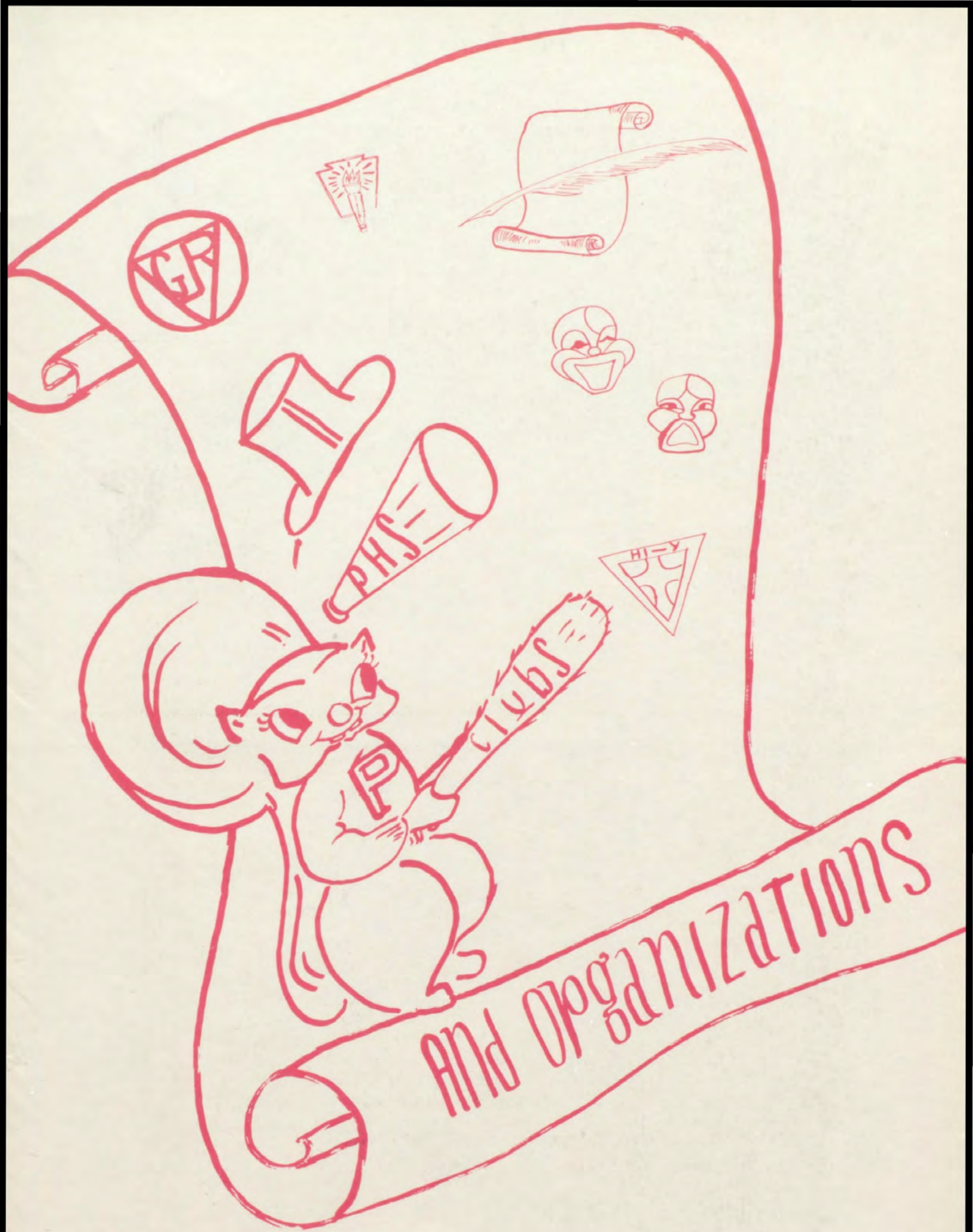
JANET LOIS STEWART, B.S.
Home Economics



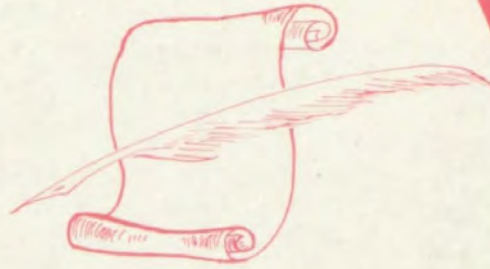
T. ARTHUR TRELOAR
Industrial Arts



CATHERINE L. WAGNER, B.S.
Homemaking



AND ORGANIZATIONS





BACK ROW (Left to Right) — Alma Johnson, Gordon Kalbfleish, Winona Beard, Charles Baumgartner, Paul Campbell, Gerry Jacobs, Beverly Hoffer, Russell Hinds, Donna Crandall, Stuart Steen, Dorothea Rodgers.

SECOND ROW — Gladys Black, Rob Schneider, Paul Rehkopf, Hilda Gokee, Tom Washburne, Vernie Schneider, Bill Sommer.

FRONT ROW — John Murphy, Gerry Behan, Audrey McPherson.

They Represent Our Student Body

With leadership and service its aim, the Student Council was organized about 17 years ago. To date the council has a long list of achievements behind it. This year the organization has directed the sale of Defense Stamps and Bonds. The group has introduced our assembly speakers and entertainers; members also helped the Seniors sell candy during the Tournament concession. At the first meeting of the council last fall the following people were elected to office: Gerry Behan, president; John Murphy, vice-president; Audrey McPherson, secretary. Representatives of the various advisories and the class officers compose the remainder of the council.

All This and Honor Too!

The Petosega chapter of the National Honor Society was established in 1925.

Candidates are chosen from the upper twenty-five per cent of the junior and senior classes. Seniors are eligible after the first semester of their senior year, and juniors may be chosen in the last four weeks of their junior year.

The Honor Society is a reward not only for high scholarship, but for leadership, character, and service as well.

Miss Beebe is the sponsor of the local chapter. Officers for this year are: Mary Lou Larson, president; Audrey McPherson, vice-president; Janice Keller, secretary.



SEATED (Left to Right) — Lornajean Schneider, Audrey McPherson, Mary Lou Larson, Janice Keller, Miss Beebe.

TOP ROW — Edwin Weber, Ruth Ann Schomberg, Marian Mollhagen, Barbara MacMillan, Leona Kondziela, Patrick Campbell.

We like action and

We really get
action too!



BOTTOM ROW (Left To Right)—Alyce Friend, Patsy Donnelly, Ruth Ann Schomberg, Marian Mollhagen, Leona Kondziela.
TOP ROW—Jack Daly, George Bowman, Miss Miriam Nickel, adviser, Ed Weber, Russell Hinds,
NOT IN PICTURE—Louise Doherty and Paul Rehkopf.

Pep Club



The Pep Club, an active organization which encourages school sportsmanship, trains cheerleaders, puts on the pep meetings and promotes school spirit has proved a great benefit to the school. This year they have also redecorated the committee room and held a Pep Club Carnival.

To qualify for membership one must participate in school activities, attend games, have leadership ability and show good sportsmanship. The number

of new members elected is determined by the number of seniors graduating with twelve as the limit.

The officers for the year were Ruth Ann Schomberg, president; Charles Baumgartner, vice-president; Marian Mollhagen, secretary-treasurer. Miss Nickle was club sponsor.

This year Russell Hinds, Leona Kondziela, Alice Friend, Jack Daly, Louise Doherty, George Bowman and Paul Rehkopf were initiated into the club.

Toppers Club

Tops among the clubs is the Toppers Club, an all-senior organization! It was formed in the fall of 1939 under the leadership of Mrs. Stech and Mrs. Burton Cole. Its purpose is to be of service to the school and to give the students more of an opportunity for social life.

The membership consists of twelve boys and twelve girls from the senior class. In the spring of the year the members select Juniors to carry on the work of the club the following year.

The club meetings are held twice a month with the president presiding. The meetings usually consist of informal business discussions. The officers for this year are: president, Pat Doherty; vice-president, Dick Friend; and secretary-treasurer, John Steffel, first semester; Pat Campbell, second semester.

UPPER PICTURE (Left To Right)—Bob Williams, Boyd Banwell, Dale Switzer, Pat Doherty, Pat Campbell, Mildred Meister, John Steffel, Evelyn Campbell, Julia Laszar, Jerry Behan.

BOTTOM PICTURE (Left To Right)—Elinore Sanborn, John Winter, Laurence Longcore, Shirley Schmitt, Carl Riley, Juanita Thompson, Evelyn Longcore, Norman Russell, Gladys Black, Marjorie Steffel.

NOT IN PICTURE—Arlene Wurst.



Follow Their Quest



FIRST PICTURE (Seated Left To Right)—Beverly Hoffer, Dorothy Benjamin, Janet Schneider, Shirley Jo Ernst, Dora Paige. **STANDING** (Left to Right)—Patty Kilborn, Frances Hamill, Angela Powers.

SECOND PICTURE (Bottom Row, Seated)—Marian Mollhagen, Ruth Olson, Barbara MacMillan. **SECOND ROW**—Charlotte Hess, Anna Dalton, Mary Lou Larson, Betty June Tuttle.

THIRD PICTURE (Seated Left To Right)—Vera Jean Grossman, Louise Cripe, Margaret Wheat, Sue Miller, Marilyn Lee. **TOP ROW**—Shirley Fryman, Nancy Beard, Jean Liberty.

NOT IN PICTURE—Anne Lanterman and Patty Stafford.

The Girl Reserves attempt to follow their Quest: Everywhere always, in sunshine and shadow, in joy, in disappointment, in success, in defeat, we, the Girl Reserves, follow the Gleam. If once we fall, we rise to face the light; if once we fail, we fight again to win; we cannot be lonely, we stand together; from North to farthest South, from East to distant West, ours is the surest Quest—we know the one we follow.

There are 35 members in the club. Membership is determined by the girl's showing a sincere interest in the club and a willingness to live up to its standards.

The following girls served as officers for this year: Mary Lou Larson, president; Anne Dalton, vice-president; Margaret Wheat, secretary; and Dorothy Benjamin, treasurer. Meetings are held twice a month, under the direction of Miss Helen Helrigel.

Twelve Pretty Girls

With a membership of twelve senior girls, with Mrs. Fink as adviser, the Candle Club ended the school year with Leona Kondziela as president and Evelyn Campbell, secretary-treasurer.

The purpose of this club is to bring the girls together in various forms of social activities.

The club started the year with a successful football game concession and followed it up with a Christmas tea and a unique party called a "Spinsters' Spin." Other club events were a pot-luck supper, a Mother's day tea, and a tea for the women of the faculty.



SEATED (Left To Right)—Barbara MacMillan, Marian Mollhagen, Evelyn Campbell, Leona Kondziela, Ruth Ann Schomberg, Janice Keller.
TOP ROW—Charlotte Hess, Mary Lou Larson, Audrey McPherson, Vera Jean Grossman, Jerry Behan, Mrs. Merrill Fink, Mary Rita Hegener.

Our Newest Club



SEATED ON FLOOR—Vera Jean Grossman, Peggy Left, Julia Lazar, Ruth Olson, berry, Charlotte Hess, Laura Steffel, Anna Beyer, Miss Schneider, Ruth Brill, Iris Stansberry, Charlotte Hess, Laura Steffel, Anna Beyer, Miss Schneider, Ruth Brill, Iris Stansberry.

THIRD ROW—Ruth Ann Schomberg, Patty Stafford, Evelyn Campbell, Louise Cripe, Molly Fochtman, Alyce Friend, Mary Leshner, Leona LaMore, Ethel Thompson, Judy La Tocha, Anna Mackie, Mildred Mollhagen, Margaret North, Eleanor Steffel, Lornajean Schneider, Marian Mollhagen, Margaret Kolinske.

TOP ROW—June Bremmeyer, Hilda Gokee, Patsy Donnelly, Viola Kage, Mary Lou Larson, Marian White, Betty June Tuttle, Mary Rita Hegener, Marjorie Steffel, Irene Stowe.

One of the newest organizations for girls this year is the Home Economics Club. Miss Wagner and Miss Stewart are the faculty advisers.

The club is made up of girls who have completed at least one semester of Home Economics. Its objects are: (1) To promote better standards for homemakers. (2) To maintain an active interest in home making for girls who have had, or who are taking home making. (3) To be of service to the Home Making Department, the school, and the community.

The club officers are: president, Ruth Brill; vice-president, Charlotte Hess; secretary, Janet Schneider; and treasurer, Iris Stansberry.

Blossoming Forth

Hayrides, candy sales, St. Patrick's Day Dance, and a hike through the snow at twilight are some of the many Sub Deb activities that have been carried on during the past year.

The Sub Debs are girls chosen from the Eighth to the Eleventh grades. When the girls become seniors, their membership is transferred from an active to an honorary status.

Present officers of the club are: Shirley Fryman, president; Suzan Miller, secretary; Marvel Platt, treasurer; and Miss Schreur's faculty adviser.

BOTTOM ROW—Suzanne Miller, Miss Schreur, Marilyn Lee.

TOP ROW—Margie Larson, Margaret Wheat, Gloria Gordon.

SECOND PICTURE (Bottom Row)—Marvel Platt, Alice Townsend.

TOP ROW—Vernie Schneider, Pat Price, Nancy Beard, Ruth Marie Nevins.

THIRD PICTURE (Seated On Floor)—Dorothy Benjamin.

TOP ROW (Seated)—Caroline Brockway, Beverly Boening, Shirley Fryman, Mary Wallace.



"To Face Life,
To Give The Best"



FRONT ROW—Dick Friend, David Ross, Donald Miller, Jay Bain, James Townsend, Merle Cosgrove, Bob Lucas, Don Hassett.
SECOND ROW—Gage Loveless, Ralph Graham, Ralph Gillam, Paul Rehkopf, Russell Hinds, Hugh Winnell.
THIRD ROW—Harold Cosgrove, Don Greenwell, Floyd Potts, Pat Campbell, Boyd Banwell, Dale Switzer, Bob Williams, Jerald Jacobs, Jack Harbaugh, Mr. MacMillan.

Down through the years Hi-Y has stood for truly democratic living. Their purpose is to create, maintain, and extend throughout the school and community, high standards of Christian character. Each year they undertake several worthwhile projects. This year they have lived up to their purpose by sponsoring, jointly with the Girl Reserves, a Vesper Worship Service on Palm Sunday open to high school students.

As an annual project, the Petoskey High School Hi-Y sends delegates to the Annual Michigan Older Boys' Conference. This year the club sent Paul Rehkopf, George Bowman, Pat Campbell, and Jim Townsend, with Mr. McDowell as adviser. The Club also sends two delegates to Camp Hay-O-Went-Ha, a Hi-Y training camp on the shores of Torch Lake. Last summer the MacMillan Chapter sent Paul Rehkopf and Jim Townsend.

The "Rough Riders," P. H. S. debate team, whose nickname has some connection with Coach A. T. Rolph's car, pounded to an excellent finish during the season of 1941-42.

The question debated was: Resolved, that every able-bodied male citizen in the United States should be required to have one year of full-time military training before attaining the present draft age.

For Audrey and Lornajeane, this was the last season.

Other students out were Ralph Gillam, Peggy Left, Marilyn Lee, Jean Liberty, Patsy Donnelly, Ruth Ann Schomberg, George Bowman, and Douglas Kirp.

Petoskey High School is extremely fortunate in having so fine an adviser as "Mac" MacMillan. In recognition of his twenty years of service in Hi-Y work, the fellows voted unanimously to name this school organization the MacMillan Chapter of Petoskey Hi-Y.

Upon recommendation from state Hi-Y leaders, our Hi-Y has brought about a new system of selecting members for the club. Instead of each member nominating a friend, now any boy who is truly interested in Hi-Y work and who pledges to carry on its purpose may become a member. The MacMillan Chapter started off the fall of 1941 by electing Pat Campbell president, Dale Switzer vice-president, Charles Baumgartner treasurer, and Dave Ross secretary.

SEATED AT TABLE—Jean Liberty, Ralph Gillam, Audrey McPherson.
STANDING—Marilyn Lee, George Bowman, Lornajeane Schneider, Ruth Ann Schomberg, Peggy Left, Jim Townsend, Mr. Rolph.



"Rough Riders"

Boy! they've got pep



Curtain Calls as Dramatists entertain.

The first semester, Dramatics was sponsored by Mrs. Rosalie Stech, and the officers were as follows: Anne Dalton, president; Gloria Gordon, vice-president; Shirley Jo Ernst, secretary; Edwin Weber, treasurer.

Mrs. Burton Cole took charge of the second-semester Dramatics course. There were two re-elections: Evelyn Campbell, secretary, and Nancy Beard, treasurer.

Subject matter for the first semester was "the nature of drama and the technique of acting," while the second semester took up "stage settings and make-up."

The club meets an hour after school every Tuesday. Upperclassmen receive two solid credits providing they take Dramatics both semesters.

There were two short plays given for the benefit of the public. The first was "The Unseen," presented in the auditorium during the Education Week program with parts taken by Anne Dalton, Janice Keller, and Edwin Weber. The second was "The Rehearsal," with Gloria Gordon, Nancy Beard, Lorna Notestine, Shirley Fryman, Vernie Schneider, and Ruth Marie Nevins. This playlet was given before the first hour English classes.

Several short plays were given by the class for the members alone to study the technique of acting.



FRONT ROW (Seated Right to Left)—Shirley Fryman, Ruth Ann Schomberg, Pat Stafford, Maxine Brasseau.
 SECOND ROW (Left to Right)—Nanette Paulus, Nancy Beard, Evelyn Campbell, Anne Dalton, Marian Mollhagen, Gloria Gordon, Elaine Sanders.
 THIRD ROW—Pat Doherty, Donna Crandell, Evelyn Longcore, Helen Waldron, Margaret Kolinske, Ruth Olson, Marilyn Lee, Lorna Notestine, Marilee Brasseau, Ellen Notestine.
 FOURTH ROW—Edwin Weber, Mary Lou Larson, Beverly Hoffer, June Bremmeyr, Charlotte Hess, Evelyn Long, Dorothy Benjamin, Elinore Sanborn, Gage Loveless.



Junior Play "Young April." They were Juniors then.



The Hi-Light

Vol. 10, No. 4 Petoskey High School March 26, 1942

"It" Finally Arrives After Much Delay

It's about time it arrived. I thought I'd never see the day when it would be finished. I counted on it's being finished about two years after I graduated; but it's here!! Whew, I nearly fell over when I walked in here and saw it back there as nice as you please, just waiting for some busy people to work at it.

What is it??? Well, it's about time someone told you. Gee, I can't get over it. It's brand new. . . . Gee, I never thought I'd live to see the day when. . . . Oh yes, the "it". Well, guess what??? It's completed. Just think, it took them all that time to make it and it is finally here. What????

The Copy Table (for the poor journalism class)!!!



Quill-Scroll Holds Candle Ceremony

At a candlelight ceremony performed in the Music room of Quill and Scroll, the international honorary high school journalism society, seven members were initiated into the Petoskey chapter.

The members honored in this ceremony were Patrick Campbell, Patricia Doherty, Leona Kondziela, Elinore Sanborn, Ruth Ann Schomberg, John Steffel and James Townsend.

Bob Benjamin, master of ceremonies, presented the new initiates with their pins with the assistance of the following alumni members: Gerald Ernst, Lynetta White, Joyce Smith, Betty Dow, Jim Doherty, Nancy Ann Calzaretta, and Verna Belle Sommer.

Punch and cookies were served by Mrs. John F. McDonald who acted as hostess and the remainder of the evening was spent dancing. Parents and friends attended the functions. Mr. McDonald and Mrs. Stech are advisers of the group.



Upper photo, seated left to right — Audrey McPherson, Dorothy Benjamin, Jerry Behan, Marilyn Lee, Patty Stafford, who were inducted into the Society April 21.

Lower photo, top row, left to right — Nancy Ann Calzaretta, '39, Joyce Smith, '39, Betty Dow, '40, Gerald Ernst, '41, Bob Benjamin, '41, Jim Doherty, '40, Lynetta White, '40, Verna Sommer, '41.

Bottom row — John Steffel, Pat Doherty, Leona Kondziela, Ruth Ann Schomberg, Elinore Sanborn, Patrick Campbell, Jim Townsend.

Hi-Light Wins First Place Award

Traverse Host To 2nd Annual Conference

The Hi-Light won first place award among northern Michigan Printed School Papers at the second annual Northern Michigan High School Press Conference held in Traverse City High School on Saturday, November 29. The judging was done by representatives of Michigan commercial newspapers including the Traverse City Record Eagle. Other

1st column, left to right—Letha Baird, Gladys Black, Dorothy Benjamin, Margaret Stanley. (2nd picture)—Elinore checks the calendar. Leona Kondziela, Katherine Hull, John Steffel, Bill Sommer, Ruth Ann Schomberg, Jim Townsend. Inset: Marilyn Lee.

Journalists to Attend Meeting

About twenty-five members of the Hi-Light and Petosegan staffs will attend the second annual regional conference for high school news workers at Traverse City, Saturday, November 29. Editor Frank Sparks of the Grand Rapids Herald will be the principal speaker at the gathering, which is a one-day affair.

Discussion groups and a convocation for awarding of prizes to winning papers will be held in the afternoon, with a tea dance concluding the program.



Journalists Elect To Honorary Group

Six seniors and one junior will be inducted into Quill and Scroll, international honorary journalistic society, by the first election this school year.

Pat Doherty, Ruth Ann Schomberg, Leona Kondziela, Elinore Sanborn, Jim Townsend, Pat Campbell and John Steffel will receive their badges at a formal candlelight ceremony in Room 16, Thursday evening, Feb. 19, at 8:00. Alumni members will take part in the ritual. Refreshments, dancing, and a business meeting will also be included on the program.

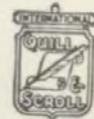
The Hi-Light

We Advocate

- ◆Arrangement for bigger and better cafeteria facilities
- ◆Provision for more and varied lunch-hour activities.
- ◆Improvements in the Furnishing and upkeep of the Committee Rooms in the Senior Study Hall.

Member NATIONAL SCHOLASTIC PRESS ASSOCIATION EST. 1921 1941-42

First Place NSPA



First Place Quill & Scroll Award 1939-'40-'41

Member Michigan Interscholastic Press Association

Entered as second class matter at the Postoffice at Petoskey, Michigan, December 14, 1939 under the Act of March 3, 1879.

Published semi-monthly during the school year (except vacation periods) by the Journalism Class of Petoskey High School, Petoskey, Michigan.

Subscription price 50c per semester by mail. Single copies 5c. Activity ticket holders are subscribers if the ticket is paid up to the date of issue.

Printed in Petoskey by C. E. GARVIN CO.

EDITOR-IN-CHIEF Lornajean Schneider
MANAGING EDITORS Pat Doherty Pat Stafford

Literary Staff

News Editors Julia Lassar
Sports Editors Bill Sommer Harold Hayner Eugene Ecker
Organization Editor Katherine Hull
Feature Editor Leona Kondziela
Music Editor Ruth Ann Schomberg
Art Editor Margaret Kolinske
Copy Girls' Margaret Stanley Letha Baird

Business Staff

BUSINESS MANAGER John Steffel
Advertising Manager Gage Loveless
Advertising Staff Marilyn Lee Elinore Sanborn Bill Lamsar

Circulator James Townsend
Auditor Gladys Black
Faculty Adviser John F. McDonald

Annuals Exhausted In Sales Campaign

**Purchasers May Have
Names Imprinted**

The 1942 Petosegan Sales staff completed the allotted number of copies available on the print order and no more are available it was announced today by Pat Campbell, business manager of the Yearbook. Sales, slow in starting, took a quick spurt close to the deadline so that the print order was reached without trouble. Because of a limited budget it is impossible to print more than are ordered and books are not being ordered for those who did not reserve them.

Names Will Be Imprinted Again

Again this year it will be possible for students to have their names stamped on the book making a personal copy which will not be mislaid or exchanged during the autograph season. Those who wish their cover personally stamped may do so by paying an additional 15c to their salesman or leaving it at the Petosegan office in Room 11.

New Type Theme Featured

"Petie," the gay young squirrel, will be featured as the theme in the book and will cavort gaily through it, giving a touch of friendliness never before achieved in a yearbook here. "Petie" is made available through a new process of printing by which the staff is able to give a yearbook better than ever before without increasing the budget.



Upper photo: Iris Stansberry, Jerry Behan, Audrey McPherson, Barbara MacMillan and Mary Rita Hegener.

Lower photo: Juanita Thompson, Evelyn Campbell, Mary Lou Larson, June Brenneymyr and Verajeau Grossman.

Camera Fiends to Find Snapshots

Bring In All Pictures for
1942 Petosegan



Above: Jerry and Janice check sales records.

Below: Pat, Elinore, and Russell investigate the files of the Hi-Light for publicity information. Lower picture: "Petie" and his creator, Arlene Wurst.



Class Of '42 Will Publish Lucky Book

Lucky will be the class members of '42 in the publication of the yearbook this year because it is the 13th volume. The new, exciting 1942 Petosegans will be on sale beginning February 20. They may be bought by full-payment or by the installment plan which consists of making a first down payment of 35c to your own Petosegan salesman and the two remaining payments to Sales Manager, Russell Hinds.

This year the yearbooks are going to be published by a new and improved method which will enable us to have from 48 to 64 pages. This means it will be possible to have more action shots than ever before.

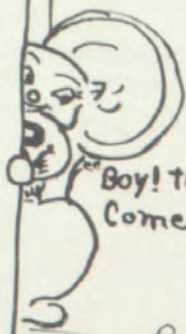
Editor-in-chief, Pat Doherty says that this year we are going to be escorted clear through the book by "Petie", the cutest little fellow you ever laid eyes on.

Upper photo: The staff does some night work. Patty Stafford, Pat Campbell, Editor Doherty, and Beverly Hoffer.

Lower photo: John Steffel welds the trimmer on the Senior pix with his usual "humor". Behind the table Arlene Wurst, Pat Doherty, Mr. McDonald, Russell Hinds, and Patty Stafford.



and on to the Music Dept.



"Boy! This is good.
Come on in."

Girls Sextette

LEFT TO RIGHT—Patsy Donnelly, Alyce Friend, Lorna Jean Schneider, Gloria Gordon, Jayne Ellen North, Janet Schneider.



"Song Birds"

Twenty-four boys "with a song in their hearts" composed this year's boys' glee club. Sea songs, negro spirituals, college songs, and musical comedy hits were among the many types of music sung by the group throughout the year.



BOTTOM ROW (Seated Left to Right)—Herman Knuth, Paul Rehkopf, Roland Phillips, Frank Burek, Ralph Graham.
 SECOND ROW—Noel Feather, Pat Keating, Jim Townsend, Norman Russell, Edwin Weber, Don Greenwell, Cy Ketchum, Don McCalmon.
 TOP ROW—George Bowman, Jack Daly, Russell Hinds, Kenneth Hoover, Ed Kolinske, Charles Baumgartner, Pat Campbell, Floyd Potts, Gage Loveless, Don Bassett, Martin Reber, Bob Schneider.

SEATED AT PIANO—Shirley Fryman.

BOTTOM ROW (Left To Right)—Marvel Platt, Shirley Fryman, Marilyn Lee, Jim Townsend.

SECOND ROW—Ruth Olson, Suzanne Miller, Hilda Gokee, Floyd Potts, Ed Weber.

THIRD ROW—Alice Townsend, Janice Keller, Janet Schneider, Roland Phillips, Jack Daly.

FOURTH ROW—Lornajean Schneider, Gloria Gordon, Alyce Friend, Gage Loveless, George Bowman.

FIFTH ROW—June Bremmeyer, Anne Dalton, Patsy Donnelly, Pat Campbell, Jerry Jacobs.

SIXTH ROW—Jayne Ellen North, Ruth Ann Schomberg, Pat Knight, Don Bassett.



Miss Miriam Nickle
Vocal Supervisor

FRONT ROW (Left To Right)—Mary Leshar, Katherine George, Patsy Donnelly, Alyce Friend, Jayne Ellen North, Judy LaTocha, Marilyn Fraley, Dora Mae Thorpe, Betty Brown, Anna Louise Beyer, Laura Steffel, Shirley Jo Ernst, Ruth Ann Schomberg, Peggy Left, Lorna Notestine, Jenny Czerkie, Ellen Notestine, Ethel Thompson, Anna Parr, Maxine Brasseur, Molly Fochtmann, Jennie Budek, Jean Kaniarz, Daisy Spears, Hilda Gokee, Janet Schneider, Marilyn Lee, Janice Keller.

BACK ROW (Left To Right)—Ethel Perry, Valda Hamlin, Betty Ligel, Jean Kemp, Eleanor Steffel, Gladys Black, Dorothy Grider, Florence Hankins, Margaret Kresnak, Mary Lou Larson, Charlotte Hess, Evelyn Campbell, June Bremmeyer, Louise Cripe, Beverly Hoffer, Vivian March, Thelma Kocher, Marian Mollhagen, Lornajean Schneider, Georgia Murray, Pat Gehman, Rosella Baker, Marion Pettengill, Shirley Crick, Lucille Dombroski, Dorothy Adams, Marion Smith, Mildred Campbell, Juanita Thompson, Gladys Martinchek.



"A Classic In Itself"

Under the excellent directorship of Mr. Walter W. Haberaecker, the Petoskey High School band completed an unusually successful year.

The band performed at all of the football and basketball games by offering novelty marches and college songs, which added much color to the games. The band also marched for the last home basketball game with Cheboygan. They formed the two letters "C" and "P" besides forming "U S A" and "V" for our victory slogan. They made an out-of-town appearance at the Rogers City basketball game, February 28th.

The band made their first concert appearance at a Christmas program before the entire student body.

The first public appearance of the concert band was on February 5th. They played to a fine crowd who received their program very favorably.

A mid-winter concert was given with the combined efforts of the vocal department. A group of fifty voices sang with the band "*Crusaders' Hymn*," and "*Onward Ye Peoples*," by Sibelius.

Listed among their other performances was a Spring concert and their appearances at the annual band festival, Baccalaureate, and Commencement. Adding to all their public appearances were their flashy new blue and white uniforms.

A definite program of personal advancement was followed this year. Instruction was given in conducting and every member of the band had to direct at least once during the year.

Thanks should go to Mr. Post of the University of Michigan, and Mr. Max Smith of Charlevoix, who took over Mr. Haberaecker's duties for a period of six weeks in the fall when he was unable to be with us.

FIRST SEMI-CIRCLE (Left To Right)—Jim Townsend, Jane Parks, Caroline Brockway, Dorothy Brockway, Joan Rose, Bob Stanley, Shirley Fryman, Ruth Marie Nevins, Dolores Burnett, Marvel Platt.

SECOND SEMI-CIRCLE—Ralph Gillam, Janet Wilbur, Dick Tousain, Joyce Hartnell, Carol Chapman, Oliver Kocher, Lorraine Burgess, Margaret Wheat, Don McCalmon, Doral Chapman, Clark Dean, Shirley Greenwell, Marian Hammond, Boyd Banwell, Shirley Schmitt, Alice Townsend, Mary Jane Fogerty.

THIRD SEMI-CIRCLE—Grant Lambertson, Helen Dickes, Arva June Phillips, Wayne Kring, Louis Reyner, Patton Morrison, Douglas Kirp, Don Miller, Owen Jorgenson, Colin Kemmis, Martin Reber, Orlie Baird, Douglas Bain, Archie Cole, Pat Price, Roland Phillips, Don Stark, Jay Bain, Allan Townsend.

STANDING—Don Hodgkiss, Paul Rehkopf, Ed Weber, Bob Schneider, George Bowman, Jack Daly, Ralph Roderick.





under classmen

Mr. Middlesworth's
Advisory, 7B-7A



Mrs. Gaumer's
Advisory 7A-7B



Mr. Fink's
Advisory, 8A



Their first years

BOTTOM ROW (Left to Right)—Cleo Olsen, Jack Ulrich, John Johannson, Bob Hogan.

SECOND ROW—Jack Johnson, Tommy Niles, Elwin Witte, Noel Feather, Lyle Phillips, Loyd Cole, Earl Murray, Richard Cosgrove, Glen Sommer.

THIRD ROW—Dale Billiau, Ralph Cardy, Clarence Oelke, Don Engles, John Mann, Jack Kalbfleisch, Eugene Knight, Bob Connelly, Bob Chattaway, Peter Lashmet, Tom O'Neal, Dick Thomas, Bob Hamill, Bob Ball, John Batsakis, Chester Adams.

TOP ROW—Dale Peterson, Jim Price, Robin Paul, Eugene Knight, Ormond Pailthorp, John Perry, Ed Kurburski, Howard Keiser, Richard Haumerick, Tommy Ritter, Herval Canell, Fred Peters, Charles Anderson, Dick Annable, Richard Smith.

FIRST ROW (Seated Left to Right)—Marcerline Kuebler, Mildred Waugh, Jean Anderson, Mary Batsakis, Pat Dalton, Gertrude Peterson, Joyce Platt, Carol Mundhenk.

SECOND ROW—Joan Treadwell, Elaine Lites, Rosezella Brown, Jean Knecht, Anna Marie Hager, Marjorie Smith, Joan Guillaume, Grace Tripp, Gwen Miller, Florence Price, Eclair Payne, Regina Roderick, Bonny Holcolm, Dora Mae Tharp.

THIRD ROW—Ruth Brown, Maly Helen Bellmer, Colleen Ouder Kirk, Vivian Long, Mary Edith Scott, Jean MacMillan, Marie Keway, Lylamae Wienrich, Metta Ann Hinds, Dorothy Kemp, June Knowland, Shirley Abbey.

TOP ROW—Jackie King, Beatrice Gimmell, Nancy Cribbs, Mary Nevins.

NOT IN PICTURE — Joyce Compton, Doris Stark, Virginia Archer, Eileen Curtiss, Velda Rae Hice, Betty Houts, Winifred Knowlton, Dorothy Whitfield.

FIRST ROW (Seated Left to Right)—Albert Bearup, Dick Oelke, George Johns, Eugene Harvey.

SECOND ROW—Dick Kage, Louis Reyner, Jack Maxfield, Tom Washburne, Jack Wooden, Arthur Burnett, Gordon Willis, Russell Zink.

THIRD ROW — Phillip Keway, Kenneth Turk, Ivan Dunning, Wayne Kring, Owen Jorgenson, Norman Coolbaugh, Henry Burch.

NOT SHOWN IN PICTURE—Charles Campbell and George Leo.

**CLASS OF 1947
OFFICERS**

President
Dorothy Meyer

Vice-President
Gladys Taylor

Secretary-Treasurer
Dorothy Brockway



in Petoskey High.

**Miss Wagner's
Advisory, 8B-8A**

FIRST ROW (Sitting Left to Right)—Elsie Keyes, Marian Berger, Jacqueline Zipp, Winona Beard, Joan Rose, Betty Hankins, Veloara Coonrod, Gloria Turk, Letty Wagenschutz.

FIRST ROW (Standing)—Joyce Rose, Gladys Taylor, Ida Barber, Virginia Crandall, Carolina Hankins, Rosalie Turk, Lucretia Bellemmer, Shirley MacDougall, Charlene Sherman, Jean Pletzer, Margery Wimer, June Shank.

SECOND ROW (Standing)—Evelyne Hamill, Dorothy Meyers, Lorahdelle Pope, Dorothy Brockway, Barbara Anderson, Regina Schmetter, Luella Hall, Marilyn Sanborn, Shirley Ann Ernst, Valerie Ulberg, Kathleen Lewis.



**Mr. McDowell's
Advisory, 8B-8A**

FRONT ROW (Left to Right)—Harold Turk, Billy Pailak, Jack Cosgrove, Calvin Keubler, Glenn Kemmis, Bill Kemp, Roy Stanley, Harold Chew.

MIDDLE ROW (Left to Right)—Charles Pemberton, John Beyer, Raymond Kojinski, Oliver Kocher, Jesse Billiau, Don West, Gerald Grossman.

BACK ROW (Left to Right)—Ed. Hutcherson, Dale Reberg, Dale Compton, Alfred Dau, Walter Pope, Harold Laner, Walter Fuier, Jack Duley, Paul Lashmet.

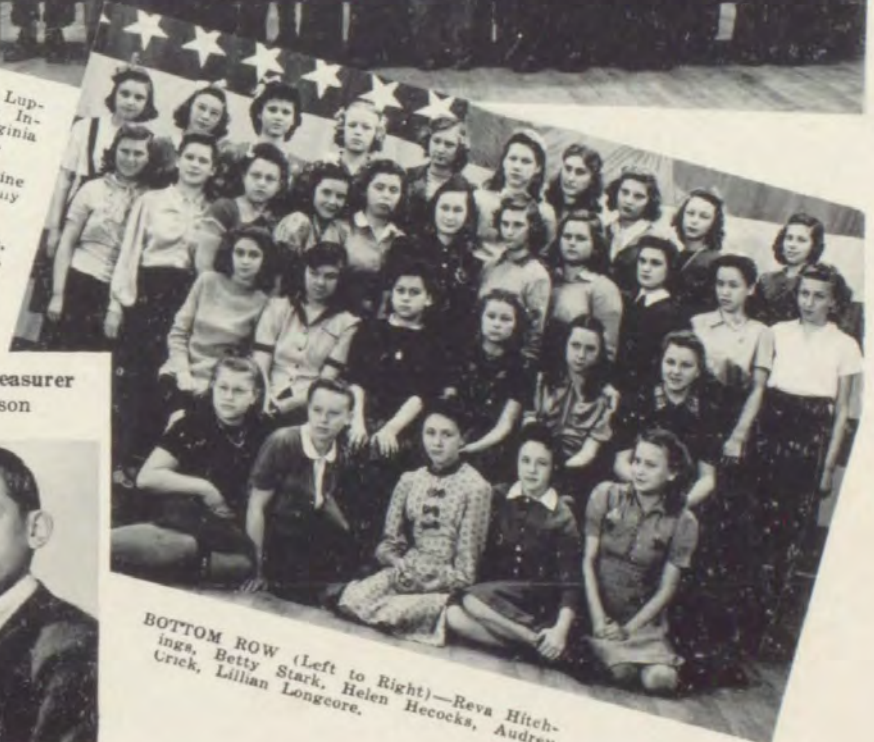


**Miss Nickle's
Advisory, 8A-9B**

TOP ROW—Elizabeth Hurlbert, Katherine Lupke, Arda Schaefer, Dolores Sik, Joyce Ingold, Mary Johnson, Enola Hatch, Virginia Cripe, Georgia McDougall, Reva Compton.

SECOND ROW—Mary Helen Bellmer, Maxine George, Juanita Pichl, Grace Batemen, Dolly Schraffenberger, Velma Gokee.

THIRD ROW—Dorothy Rought, Alois Geham, Irma Leipke, Dorothy Angevine, Pat Hepner, Geraldine Haines, Pat Hardy, Audrey Perry, Dorothy Crouse, Margaret Peters, Lucille Niswander.



**CLASS OF 1946
OFFICERS**

President
Blair Thompson

Vice-President
John Dalton

Secretary-Treasurer
Billy Olson



BOTTOM ROW (Left to Right)—Reva Hitchings, Betty Stark, Helen Hecoeks, Audrey Crick, Lillian Longcore.

Freshmen, one and all

Mr. McDonald's
Advisory, 9B-9A



FIRST ROW (Left to Right)—Harold Keiser, Don McCalmon, Harry Larson, Merton McWaters, Bryce Steiner, Bob Schneider, Fred Burrows, Bill Olson, Blair Thompson, Bob Ross.

SECOND ROW—John Dalton, Don Hodgekias, Bill Smith, Bob Peters, Dick Dean, Basil Switzer, Bob Bressman, Doral Chapman, Cecil Annabell, Kenneth Friend.

NOT IN PICTURE—Roy Kolinske, Dick Ball, Bob Cross, Lloyd Leisner, Gordon Sandel.



Miss Kennedy's
Advisory, 9A

BOTTOM ROW (Left to Right)—Eleanor Epler, Juanita Mann, Arlene Strickland, Mary Zimmerman.

SECOND ROW—Opan Coveyou, Cherry Conroy, Helen Dickes, Faye Weber, Corinne Baker, Shirley Hankins, Aurilla Brown, Lillian Klock, Norma Murray.

TOP ROW—Dora Mae Tharp, Betty Knight, Eleanor Ford, Pauline Fall, Agnes Nieswander, Helen Hammond, Jean Herr, Ruth Weimer, Dorothy Miller.

CLASS OF 1945 OFFICERS

President
Douglas Bain

Vice-President
Faye Weber

Secretary-Treasurer
Betty Knight



They added Spice to our Life.

**Mr. Pengelly's
Advisory, 9A**

BOTTOM ROW (Left to Right)—Archie Cole, Patton Morrison, Jack O'Neal, Bill Barber, Bill Holshu.
SECOND ROW—Jim Wicker, Don Donnelly, Art Hitchings, Ralph Johnson, Gale Hand, Bob Holshu, Jack Stanley, George Greensky.
TOP ROW—Willard Chapin, Roland Phillips, Leonard Myers, Leonard Andrus, Gerald Cooper, Gordon Kalb-
fleisch, Dick Bischoff, Gale Bearup.



**Mrs. Feather's
Advisory, 9A**

BOTTOM ROW (Left to Right)—Dorothy Law-
raon, Rene Schneider, Dorothy Spears, Irene
Rūssset, Joyce Hartnell, Ellen Notestine, Jane
Parks, Shirley Frye, Dorothea Rogers.
SECOND ROW — Mary Roderick, Amy Lou
Paige, Janet Wilbur, Betty Angevine, Janice
Johnson, Carol Chapman, Lois Johnson, Esther
Ackerman, Audrey Kneal, Sally Johnson, Caro-
line Brockway.
TOP ROW—Marion Stowe, Doreen Gigzey, Mar-
lyn Fraley, Jennie Jessick, Daisy Spears,
Alice Leisner, Gladys Martinchek, Kathern
Brecheisen, Beatrice Everts, Alice Dingman.



**Mr. Musson's
Advisory 10B**

BOTTOM ROW (Left to Right)—Pat Keating, Dale
Richmond, Richard Billings, Don Stark, Dick Tou-
sain, Ralph Roderick.
TOP ROW—Bob George, George Schneider, Carl Muel-
ler, Bob Ernst, Dick Wilbur, Jack Krauser, Leo
Grossman, Doug Bain.



Sophomores were happy and gay



**Miss Beebe's
Advisory, 10A**

FIRST ROW (Seated Left to Right)—Margaret Kresnak, Peggy Left, Nancy Beard, Jean Kaniarz.

SECOND ROW ON BENCHES—Martha Bowman, Alma Mae Bosma, Pat Price, Jennie Czerkie, Mary Vargo, Margaret Rostar, Kathryn Williams.

BACK ROW—Jean Karamol, Lorna Notestine, Mary Leshar, Molly Fotchman, Jennie Budek, Sophie Gibbs, Shirley Racignol, Clara Dombroski, Anna Mackie, Norma Thompson.

NOT SHOWN IN PICTURE—Alda Hazzard.



**Mr. Low's
Advisory, 10A**

FIRST ROW (Seated Left to Right)—Maurice Case, Louis Malec, Andy Steffel, Wilburt Krussell.

SECOND ROW — Dick Kalbfleisch, Bill Leshar, Bill O'Neal, Jack Hammill, Owen Behan, Bennett Richardson.

THIRD ROW—Tom Kerwin, Lyle Grigsby, Jack Fetting, Colin Kemmis, Kenneth Glaser, Carl Tousain, Kenneth Hoyt, Meryle Cosgrove, Jack Harris.

FOURTH ROW—Vern Spears, Stewart Steen, Don McLachlan, Byron Ayres, Jim Krussell, Llewellyn Ecker, Jack Hinkley.



**Miss Helrigel's
Advisory, 10B-10A**

BOTTOM ROW (Left to Right)—Margie Larson, Thelma Kocher, Shirley Greenwell, Vivian March, Marian Mashinsky.

STANDING ON STAIRWAY — Alma Johnson, Mae Billieau, Pat Gehman, Marion Pettingill, Katherine Kocher.

SEATED ON FLOOR—Lulu Knight, Mildred Campbell, Charlene Lund, Dorothy Adams, Arva June Phillips.

SEATED ON SOFA—Gertrude St. Couer, Dorothy Annable, Leona Yahr, Wanda Crandall.

They enjoyed activities

OFFICERS
CLASS OF 1944

President
Paul Rehkopf



Vice-President
Bob Lucas



Secretary-Treasurer
Owen Behan



FRONT ROW (Left to Right)—Harold Cosgrove, Douglas Kirp, Dick Crick, Jack McDowell, Jay Bain, Lyle Stark.

SECOND ROW — Paul Rehkopf, Bob Lucas, Jack Cross, Charles Hitchings, Allan Townsend, Burton Hart, Kenneth Harvey, Bill Pletzer.

THIRD ROW—Richard Dikes, Lynn Reyner, Ralph Gillam, Bob Wager, Terry McConnell, Jack Harbaugh, Frank Burek.

NOT IN PICTURE—Denny Barrett, Clevo Chew, Henry Dickerson, John Duvernay, Don Bassett, Jack Dau, Clark Dean, Kenneth Hoover, Jack McLachlan.



Mr. MacMillan's
Advisory, 10A-11B

Miss Paulsen's
Advisory, 10A

FIRST ROW (Seated) — Alice Townsend, Marvel Platt, Margaret Hammtree, Elaine Saunders, Louise Doherty, Viola Kage.

FIRST ROW (Standing)—Juanita West, Eleanor Stanley, Grace Ecker, Ethel Thompson, Florence Hankins, Helen Kaske, Shirley Fryman, Marion Johansen, Helen Miller, Suzanne Miller.

SECOND ROW—Beverly Boening, Marian Duvernay, Virginia Knight, Margaret Welsh, Dorie Wurst, Beverly Hoffer, Dorothea Johnson, Ruth Marie Nevins, Gloria Gordon, Margie Perry, Marie Koteskey.



Junior Prom Promoters,

Mr. Rolph's
Advisory 11A-10B



FRONT ROW (Seated Left to Right)—Ralph Chapman, Jack Collins, Louis Stark, Louis Tousain.
SECOND ROW—Howard Berger, Bud Germond, Martin Reber, Donald Miller, James Townsend, George Bowman, James Wenz.
THIRD ROW—Albert Fall, Andrew Snyder, Charles Ballard, Jack Wells, Garth Hand, John Murphy, Wilbur King, Gerald Jacobs.
NOT SHOWN IN PICTURE — Frank Holzschu and Allen Leismer.



Miss Stewart's
Advisory, 11B-11A

FRONT ROW (Sitting Left to Right)—Angela Powers, Patsy Donnelly, Carol Tuttle, Hilda Gokee, Pat Knight.
SECOND ROW (Sitting)—Ruth Olson, Alice Friend, Janet Schneider, Dorothy Benjamin.
THIRD ROW (Standing)—Shirley Ernst, Cleo Johansen, Margaret Wheat, Dora Paige, Lucylle Dombroski, Jane North.
FOURTH ROW (Standing)—Patty Kilborn, Frances Hamill, Virginia Chingwa, Iris Reber, Marian Smith, Rose Daniels, Isabel Duley.
NOT SHOWN IN PICTURE—Gertrude Baines, Shirley Crick, Marion Grossman.

CLASS OF 1943 OFFICERS

President
Charles Ballard

Vice-President
Gerald Jacobs

Secretary-Treasurer
Jim Townsend



They brought The J-Hop to P. H. S.

**Miss Schreur's
Advisory, 11A-12B**

FIRST ROW (Seated)—Esther Zimmerman, Sylvia Doxtator, Donna Crandall, Neva Morris.
ROW ON BENCHES—Marilyn Lee, Lorraine Burgess, Marion Hammond, Virginia Jensen, Margaret Kolinske, Jean Liberty, Leona La More.
BACK ROW—Florence Craddock, Gloria Holmberg, Marjorie Ford, Evelyn Long, Florence Stolt, Mae Oelke, Georgia Murray, Carrie Piehl, Monesia Phillips.



**Mr. Bond's
Advisory, 11A**

FRONT ROW (Left to Right)—Bill Sommer, Bob Stanley, Bill Eaton, Jim Daly.
SECOND ROW—Bob Kelly, Charles Krussell, Jack Daly, John Pater, Wallace Zaiger, Oliver Ayres, Floyd Giggey.
THIRD ROW—Harry Maybanks, Russell Stevens, Ed White, Arthur Fall, Floyd Cooper, Charles Gaumer, Gerald Fryczynski, Raymond Riddle.
NOT IN PICTURE—Clifford Cardy, Bob Colley, Herbert Taylor.



SITTING ON FLOOR (Left to Right)—Stella Smith, Virginia Krussell, Vernie Schneider, Maxine Noel, Margaret Corey.
SITTING ON BENCH—Betty Liegl, Evelyn Mackie, Rosella Baker, Irene Stow.
THIRD ROW (Standing)—Helen Hibbler, Virginia Bischoff, Roberta Karamol, Alice Keyes, Eleanor Holloway, Marilee Brasseur, Alma Brown, Anne Skutz.
SECOND ROW (Standing)—Mary Jensen, Valda Hamlin, Marie Smith, June Bremmeyr, Marcella Rollson, Mary Wallace, Mary Williams, Helen Waldron.
NOT SHOWN IN PICTURE—Mary Agnes Clapper, Rose Marie Haas, Alice Keyes.



**Mrs. Cole's
Advisory, 11A**



Geometry class



Heavy Traffic in Lower Hall.



An exciting game.



A stitch in time saves nine!
winter !!

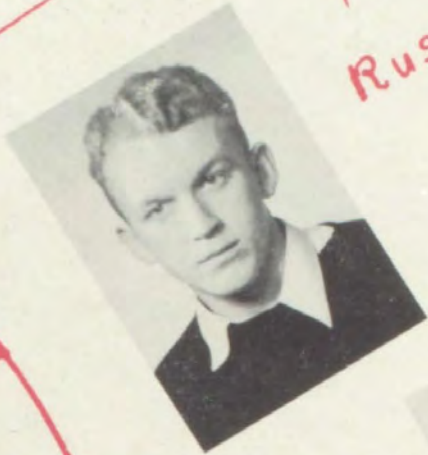


Gym class at attention.



Biology class

President
Russell Hinds



Vice-President
Charles
Baumgartner



Secretary
and
Treasurer
Jerry Behan



SENIORS

Class of 1942



Baird, Leatha
Hi-Light 4; Chorus 2.



Baird, Orlie
Band 1-2-3-4; Orchestra 1-2-3; Student Council 1;
Glee Club 2; Chorus 1-2-3-4; Tennis 2; Golf 2-3-4;
Brass Sextette 3.



Banwell, Boyd
Band 2-3-4; Hi-Y 3-4; Intramural 2-3; Track 1-2-3-4; Basketball 4; Tennis 2.



Baumgartner, Charles
Class President 2; Vice-President 1; Hi-Y 1-2-3;
Treasurer 4; Student Council 4; Glee Club 3-4;
Track 1; Football 1-2-3; Basketball 1-2-3-4; Baseball 2; Varsity Club 2-3-4; Pep Club 3; Vice-President 4.



Behan, Gerry
Class Secretary-Treasurer 4; Student Council 1,
President 4; Petosegan 1-4; Intramural 1-2-3-4;
Candle Club 3-4; Toppers Club 4; Norwegian
Nights 1; Quill and Scroll 4.



Beyer, Anna Louise
Orchestra 1-2-3-4; Glee Club 4; Chorus 4; Home
Economics Club 4.



Black, Gladys
Student Council 4; Hi-Light 4; Petosegan 4; Glee
Club 1-2-3-4; Dramatics 1; June Mad 3; Toppers
Club 4.



Brasseur, Maxine
Girls' Glee Club 3-4; Chorus 2-3-4; Dramatics 3-4.



Brill, Ruth
Band 2; Glee Club 3; Intramural 1-2-3-4; Drama-
tics 2; Girl Reserves 2-3-4; G.A.A. 1-2-3; Home
Economics Club President 4; Projectionist 1-2-3-4.



Campbell, Evelyn
Petosegan 4; Glee Club 1; Chorus 1-2-4; Intra-
mural 1; Dramatics 1-2-4; Candle Club 3-4; Top-
pers Club 4; Home Economics Club 4.



Campbell, Patrick
Hi-Y 2-3, President 4; Student Council 4; Petosegan
Staff 4; Glee Club 2-3-4; Chorus 2-3-4; Track
1-2-3; Football 1-4; Basketball 1-2; Varsity Club 4;
Double Sextette 4; June Mad 3; Young April 4;
Toppers Club 4; A Capella Choir 3-4; Senior Play,
Ever Since Eve; Quill and Scroll 4; Honor Society 4.



Case, Jack
Student Council 1; Petosegan 4; Intramural 1-2;
Football 2-3; Basketball 1-2-3; Baseball 3; Top-
pers Club 4.

Four Years Have Passed



Clapper, Clara

Chorus 2; Intramural 1; Home Economics Club 4.



Coveyou, Marion

Intramural 1; Chorus 4; Art Club 3.



Crawford, Bill

Intramural 1-2; Football 1; Basketball 4; Baseball 2; Golf 4.



Cripe, Louise

Orchestra 1-2; Glee Club 4; Intramural 1-2-3; Girl Reserves 2-3-4; G.A.A. 2; Home Economics Club 4.



Curtiss, Bob



Czerkie, Catherine

Intramural 1-2; G.A.A. 1-2; Home Economics Club 4.



Dalton, Anne

President 1; Band 1; Orchestra 1; Student Council 1-2-3; Petosegan 1-2-3-4; Glee Club 3; Chorus 4; Intramural 3; Dramatics Vice-President 3; President 4; G.A.A. 3; A Capella Choir 3-4 (finished in 3 1/2 years); Senior Play, Ever Since Eve.



Doherty, Pat

Hi-Light 4; Petosegan, Editor 4; Dramatics 4; Toppers, President 4; Art Club 3-4; Hillsborough High School, Tampa, Florida; Quill and Scroll 4.



Ecker, Eugene

Hi-Light 4; Football 2-3-4; Varsity Club 4; Toppers Club 4.



Fochtman, Vincent

Track 3-4; Football 1-2-3-4; Basketball 1-2-3; Varsity Club 3-4.



Friend, Bob

Intramural 1-2; Football 2-3-4; Basketball 3; Varsity Club 4.



Friend, Dick

Hi-Y 3-4; Student Council 1; Basketball 1-2-3-4; Baseball 1-2-3-4; Golf 2; Varsity Club 2-3-4; Toppers Club Vice-President 4.

They've All Worked Hard



George, Katherine
Girls' Glee Club 2-3-4; Chorus 2-3-4; Intramural 1-2; Norwegian Nights 1.



Gerren, Gloria
Girls' Glee Club 1-2-3; Chorus 2-3; A Cappella Choir 3; Girls' Sextette 3; Norwegian Nights 1; Dramatics 1-2; Intramural 1-2.



Graham, Ralph
Hi-Y 3-4; Glee Club 4; Intramural 1-2.



Greenwell, Don
Hi-Y 2-3-4; Glee Club 2-3-4; Intramural 1; Track 2; Football 1-2-3-4; Basketball 2-3-4; Baseball 1-2; Varsity Club 3-4.



Grossman, Vera Jean
Student Council 1; Petosegan 4; Intramural 1-2; Girl Reserves 2-3-4; Candle Club 2-3; G.A.A. 3; Home Economics Club 4.



Hankins, Ruth
Glee Club 1-2-3; Chorus 1-2-3; Intramural 1-2-3.



Hayner, Harold
East Jordan High School 1-2-3; Hi-Light 4; Football 4.



Hegener, Mary Rita
Secretary-Treasurer 2; Student Council 2-3; Petosegan 4; Intramural 2; Dramatics 2-3; Candle Club 3-4; Home Economics Club 4; Operetta, Norwegian Nights 1.



Hess, Charlotte
Glee Club 3; Chorus 4; Intramural 2-3; Dramatics, President 4; Girl Reserves 3-4; Candle Club 3-4; Home Economics Club Vice-President 4.



Hinds, Russell
Vice-President 3; President 4; Intramural 1-2; Band 1; Hi-Y 1-2-3-4; Petosegan Staff 3-4; Glee Club 3-4; Track 2; Football 4; Basketball 1-2; Baseball 2; Junior Play, June Mad (Business Manager) 3; Pep Club 4; Student Council 3-4; Varsity Club 4.



Hull, Katherine
Hi-Light 4; Art Club 2-3.



Kage, Bob

Memories Will Linger Ever



Keller, Janice

Honor Society 3-4; Secretary 4; Petosegan Staff 4; Glee Club 2-4; Chorus 3-4; Intramural 1-2; Dramatics 1-2; Secretary 3; Girl Reserves 2-3-4; Candle Club 3-4; June Mad 3; A Capella Choir 3. Senior Play, Ever Since Eve.



Kemp, Jean

Glee Club 4; Art Club 2-3.



Kemp, Margaret

Petosegan 4; Glee Club 3-4; Chorus 4; Dramatics 1; Home Economics Club 4; Norwegian Nights 1.



Kent, Clyde



Ketchum, Cy

Hi-Y 3-4; Intramural 2-3; Football 1-2-3-4; Baseball 3; Varsity 3-4.



Knuth, Herman

Glee Club 4; Basketball 3-4.



Kolinske, Edmund

Glee Club 4.



Kondziela, Leona

Quill and Scroll 4; Hi-Light 4; Glee Club 2; Chorus 2; Dramatics 2; Candle Club 3; President 4; Junior Play, June Mad 3; Toppers Club 4; Honor Society 4.



Kritcher, Stanley

Football 4.



Krusel, Marian

Intramural 1-2.



Kruzel, Louise

Chorus 4; Intramural 1-2-3-4.



Lambertson, Grant

Band 2-3-4; Junior Play, June Mad 3.

Our Records Will Remain



Lamser, William
Hi-Y 2-3-4.



Lanterman, Anna
Glee Club 1-2-3; Intramural 1-2; Dramatics 1-2;
Girl Reserves 2-3-4; Home Economics Club 4; Nor-
wegian Nights 1.



Larson, Mary Lou
President 3; Orchestra 1-2; Honor Society 3, Presi-
dent 4; Student Council Vice-President 3; Petose-
gan 4; Chorus 4; Intramural 1-2; Dramatics 3;
Girl Reserves 2, Secretary 3, President 4; Candle
Club 3-4; G.A.A. 2; Junior Play, June Mad 3;
Home Economics Club 4; Senior Play, Ever Since
Eve.



Laszar, Julia
Hi-Light 3-4; Chorus 4; Glee Club 3; Intramural 3;
Toppers Club 4; Home Economics Club 4.



La Tocha, Judy
Petosegan 4; Intramural 2-3; G.A.A. 1.
Dramatics 3-4; Toppers 4; Petosegan 4.



Longcore, Evelyn
Dramatics 3-4; Toppers 4; Petosegan 4.



Longcore, Laurence
Intramural 3-4; Football 2; Toppers Club 4.



Loveless, Gage
Band 1-2; Hi-Y 3-4; Hi-Light 4; Glee Club 1-2-3-4;
Dramatics Treasurer 3-4; Chorus 1-2; Double Sex-
tette 3-4; Junior Play, June Mad 3; Young April
(electrician) 4; Tish 3; A Capella Choir 4; Ski
Team 3; Projectionist 3-4; Norwegian Nights 1.
Senior Play, Ever Since Eve.



Mackie, John
Intramural 2-3; Football 2-3.



MacMillan, Barbara
Band 1-2; Orchestra 1-2-3; Petosegan 3-4; Chorus
3; Intramural 1-2-3; Girl Reserves 2-3-4; Candle
Club 3-4; Honor Society 4.



McPherson, Audrey
Honor Society 3, Vice-President 4; Student Coun-
cil Secretary 4; Petosegan 3, Associate Editor 4;
Intramural 1; Dramatics 1-2; Girl Reserves 2,
Vice-President 3-4; Candle Club 3-4; Debate 2-3-4;
Extempore 4; Declamation 2; Quill and Scroll 4.



Meister, Mildred
Intramural 1-2; Toppers 4; Home Economics Club 4.

High School Days Are Over



Mollhagen, Marian

Student Council 3; Hi-Light 3; Petosegan 3-4; Glee Club 1-2-4; Dramatics 1-2; Treasurer 3-4; Girl Reserves 2-3-4; Candle Club 3-4; Junior Play, June Mad 3; Pep Club 3; Secretary-Treasurer 4; Home Economics Club 4; Senior Play, Ever Since Eve; Honor Society 4.



Nessner, Leora



Parr, Anna

Glee Club 1-2-3-4; Chorus 3; Intramural 1.



Paulus, Nannette

Glee Club 2; Chorus 4; Dramatics 1-2-3-4.



Potts, Floyd

Class President 1; Hi-Y 1-2-3-4; Student Council 1-2-3; Football 2-3; Basketball 1-2-3-4; Varsity Club 3-4; Double Sextette 4; A Capella Choir 4.



Riley, Carl

Band 1-2; Orchestra 1; Glee Club 3-4; Intramural 1; Toppers Club 4; A Capella Choir 4.



Ross, Dave

Hi-Y 1-2-3; President 4; Student Council Vice-President 2; Track 1-2-3; Captain 4; Basketball 1-2-3-4; Varsity Club 2-3, Vice-President 4.



Russell, Norman

Glee Club 2-3-4; Tennis 3-4; Toppers Club 4.



Sanborn, Elinore

Luther L. Wright High School, Ironwood, Michigan 1-2; River Rouge High School, River Rouge, Michigan 3; Quill and Scroll 4; Hi-Light 4; Petosegan 4; Dramatics 4; Toppers Club 4.



Schmitt, Shirley

Band 1-2-3-4; Orchestra 1; Toppers Club 4; Petosegan 4; Chorus 4.



Schneider, Lornajean

Class Secretary-Treasurer 3; Honor Society 3-4; Quill and Scroll 3, President 4; Hi-Light 3, Editor 4; Petosegan 3-4; Glee Club 1-2-4; Chorus 1-4; Intramural 1-2-3-4; Dramatics 1, Vice-President 3-4; Girls' Sextette 2-3-4; Double Sextette 2-3-4; Debate 1-2-3-4; A Capella Choir 2-3-4; Art Club 1-2; Home Economics Club 4; Oration 2; Extempore 3; Norwegian Nights 1.



Schomberg, Ruth Ann

Quill and Scroll 4; Hi-Light 4; Petosegan 2-3-4; Glee Club 3-4; Chorus 2; Intramural 2-3; Dramatics 1-2-3-4; Candle Club 3-4; Debate 4; Junior Play, June Mad 3; Pep Club 2; Vice-President 3; President 4; A Capella Choir 4; Drum Majorette 2-3; Home Economics Club 4; Senior Play, Ever Since Eve; Honor Society 4.

Those Days Are Gone Forever



Sherwood, Williard

Chorus 1-4; Basketball 1-2-3; Baseball 1-2-3-4;
Varsity Club 3-4.



Stafford, Pat

Hi-Light 3-4; Petosegan, Associate Editor 4;
Intramural 1-2; Dramatics 1-2-3-4; Girl Reserves
2-3-4; Debate 2; Drum Majorette 2-3; Home Eco-
nomics Club 4; Quill and Scroll 4.



Stanley, Margaret

Hi-Light 4; Glee Club 4.



Stansberry, Iris

Petosegan 4; Glee Club 4; Intramural 1-2-3-4;
Girl Reserves 2-3-4; G.A.A. 2-3; Home Economics
Club Treasurer 4.



Stark, Margaret



Steffel, Eleanor

Glee Club 2-4; Intramural 1; Home Economics
Club 4.



Steffel, John

Hi-Light Business Manager 4; Petosegan 4; Foot-
ball 2-3; Toppers Club Secretary-Treasurer 4.



Steffel, Laura

Glee Club 2-4; Intramural 1; Home Economics
Club 4.



Steffel, Marjorie

Intramural 2; Toppers Club 4; Home Economics
Club 4.



Alden Sterzik

Baseball 3-4; Varsity Club 3-4; Intramural 1-2.

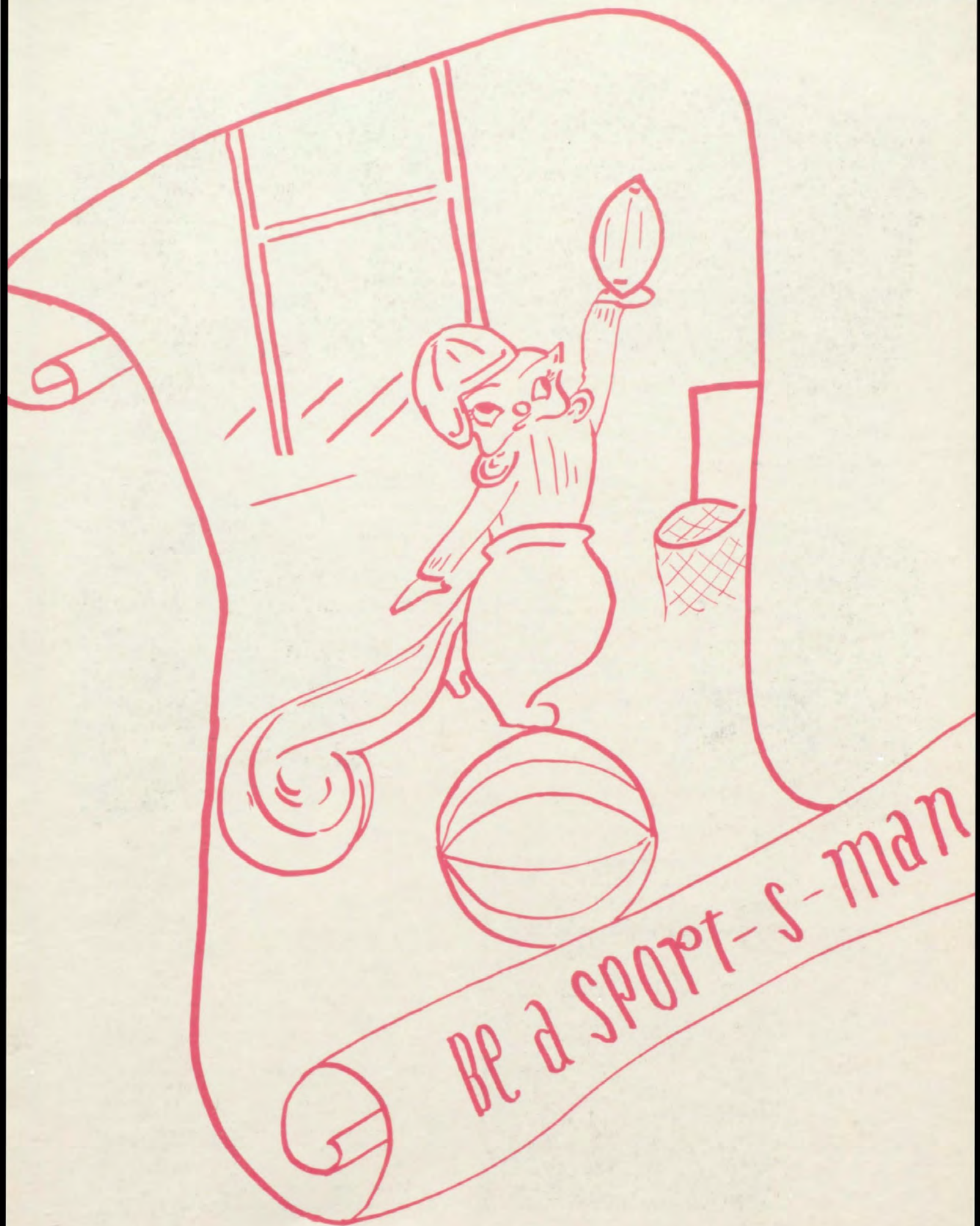


Switzer, Dale

Hi-Y 1-2-3; Vice-President 4; Intramural 2; Track
1-2-3-4; Football 1-2-3-4; Basketball 1-2; Varsity
Club 2-3, President 4; Toppers Club 4; Senior Play,
Ever Since Eve.



Thompson, Doris



BE a SPORT-S-man



LEFT TO RIGHT—Dick Kalbfleisch, Kenneth Glaser, Jack Harbaugh, Paul Rehkopf, Bob Friend, Russell Hinds, Harry Cosgrove.
 BOTTOM ROW—Pat Campbell, Vincent Fochtman, Cy Ketchum, Dale Switzer, Don Greenwell, Harold Hayner, Bob Kelley.



STANDING—Owen Behan, Gerald Fryzinsky, Lewis Tousain, Dick Friend, Coach Middlesworth.
 SEATED—Willard Sherwood, Hugh Winnell, Gerald Jacobs, Bob Kelley, Don Miller.

One of the greatest thrills to all lettermen comes when they are taken into the Varsity Club—that "honorary society" for athletes. All members must have a letter in a major sport to their credit and rank high with their fellows in sportsmanship, character, personality, and co-operative spirit.

The outstanding event of the year was a banquet at which Mr. Treloar related some of his experiences with athletics in Petoskey High School. Officers elected at the first fall meeting are: Dale Switzer, president; Vincent Fochtman, secretary-treasurer; David Ross, vice-president. Coach Middlesworth is the club's adviser.

Lettermen Now



STANDING—Ed White.
 SEATED—Dale Switzer, Dave Ross.



STANDING—Hugh Winnell, Floyd Potts.
 SEATED—Jack Harbaugh, Dave Ross, Dick Friend.

G.
 A.
 A.



For the past thirteen years the Girls' Athletic Association has been an active factor in promoting girls' athletics and good sportsmanship in our school.

Each girl, in order to obtain an award, must earn 800 points, 50 points during each month. Four hundred of the required 800 may be earned by participating in individual sports, and special activities, such as tennis tournaments, play days, and track meets, and at games.

The three types of awards given are as follows: special award, a small gold charm designed for the G. A. A.; chenille letter "P," and the chenille class numerals. The following girls received awards in the spring of 1942: Marion Johansen, Viola Kage, Leona La More, Peggy Left, and Irene Stowe.

STANDING—Marian Johansen, Irene Stowe.
 SEATED—Viola Kage, Peggy Left, Leona LaMore.

Seniors Must Bid Farewell



Thompson, Juanita
Petosegan Staff 4; Glee Club 3-4; Toppers Club 4.



Tuttle, Betty June
Orchestra 1-2; Glee Club 4; Intramural 1-2-3-4;
Girl Reserves 2-3-4; Home Economics Club 4.



Weber, Edwin
Band 3-4; Student Council 3; Glee Club 2-3-4;
Chorus 2-4; Dramatics Secretary 3, Treasurer 4;
Cheerleader 3-4; Boys' Quartette 4; Brass Quartet
4; Double Sextette 3-4; Junior Play, June Mad 3;
Pep Club 3-4; A Capella Choir 3-4; Senior Play,
Ever Since Eve; Honor Society 4.



White, Marian
Intramural 1-4; Home Economics Club 4.



Williams, Robert
Hi-Y 3-4; Junior Play, June Mad 3; Junior Play,
Young April 4; Toppers Club 4; Senior Play, Ever
Since Eve.



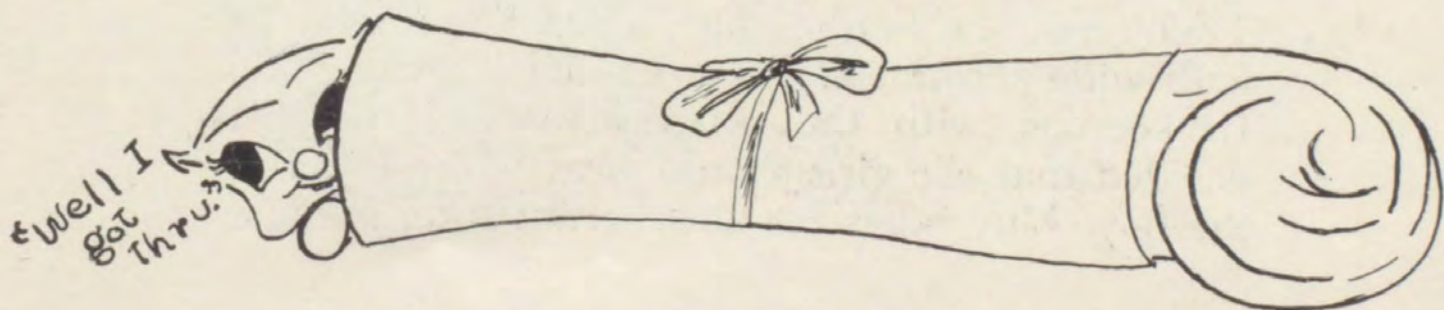
Winnell, Hugh
Hi-Y 1-2-3-4; Glee Club 4; Football 2-3; Basket-
ball 1-2-3-4; Baseball 1-2-3-4; Varsity Club 2-3-4.
Senior Play, Ever Since Eve.



Winter, John
Intramural 2-3-4; Baseball 2-3-4; Toppers Club 4.



Wurst, Arlene
Dramatics 1-2; Art Club 2-3-4; Chorus 4; Toppers
Club 4; Petosegan, Art Editor '4.



It's All History Now

In the fall of 1938, 123 of us banded together to form the Freshman class. We elected Floyd Potts, Charles Baumgartner, and Bruce Craig as president, vice president, and secretary-treasurer respectively to guide us through our first year in Petoskey High School. At the end of the term, we celebrated with a Freshman Frolic at Young's State Park.

The second year we really did things under the capable leadership of Charles Baumgartner, Hugh Winnell, and Mary Rita Hegener. Our first social affair was the Sophomore Dance, which was a huge success, and our last splurge was the annual picnic held at Youngs State Park.

Our junior year was the year in which we resolved to be different; consequently, we held a very spirited class election and finally decided upon Mary Lou Larson, Russell Hinds, and Lorna-jean Schneider to fill the leading roles. Of course, the main attraction that year was the J-Hop given in honor of the Seniors. We chose a patriotic theme that was carried out both in the gym and at the banquet at the Petoskey Bay View Country Club. The play *June Mad* was also another highlight of the term. Our annual picnic was different this year in only one respect—it was held in a down-pour.

With Russell Hinds, Charles Baumgartner, Jerry Behan, Miss Van Ness, Mrs. Stech, and Mr. Bartlett leading the fields, we entered the final step of our high school course—*Graduation!* The first big social affair of the season was the Senior-Alumni dance at which the Alumni were honored. Then, too, the Senior play, *Ever Since Eve*, met with wide acclaim and was lauded a great success. In keeping with the progressive idea, the class decided that the girls should wear white robes and the boys blue robes for their graduation exercises.

Service With a Smile

The 1941 tennis squad competed in the state tournament at Cadillac, with Allan Townsend, Quinton Banwell, and Jim Townsend participating.

Jim Townsend, Quinton Banwell, Allan Townsend, Jim Wenz, and Bill Leshner represented Petoskey at the first Annual Big Eight Class B Tournament in May on the Petoskey Courts.

Three match meets were held with Cheboygan and East Jordan.

Much has been accomplished in promoting good sportsmanship between these schools. Tennis has developed fair play because meets are officiated by the players themselves.



The Gun Goes Off

The Runner-Uppers

Captained by Dick Harbaugh, the 1941 Track Team came through with a successful season. The class of 1942 took top honors, making two successful years for them in the interclass meet.

At the Annual Conference meet the Northmen showed up well, and also the following week at Cadillac where they took part in the Regional Meet.

They ended the season by taking the Annual Triangular meet between Alpena, Onaway and Petoskey.

Those earning letters were Switzer, Ross, Harbaugh, North and White. Ross was elected captain for the 1942 season.



Pat Goes Over The Top

Walls Do Not a Prison Make

Following the football season, between 95 and 100 fellows turned out for intramural. Fifteen teams were formed with the average of six men to a team participating.

The refereeing, timing, and officiating were carried on by student help under capable direction of Mr. MacMillian.

Senior High League honors were won by Louis Stark's team, with nine wins and no losses. The Junior League came through with Carl Muller's team totaling ten wins and no defeats. The Eighth Grade honors were taken by "The Hawkes," captained by Merton McWatters. In the "Grapefruit League," formed by seventh-graders, Homrich's team won.

Future Big Leaguers

With four lettermen back from the 1940 Diamond Squad, the Northmen ended the 1941 baseball season with a very good record of six wins and two losses. Don Miller and Hugh Winnell, rated as two of the North's best pitchers, did much to pile up the team's excellent record.

The following fellows played for Petoskey: Fryczynski, catcher; Nelson, first base; Sherwood, second base; Kelly, third base; Tousain, short-stop; and Friend, Marquardt, Sterzik, and Behan alternated in the outfield positions.

Dave Comes In First



Club Swingers

The 1941 Golf team was made up of Howard Meehan, Harold Cosgrove, John Pater, and Carl Tousain.

Rainy weather cancelled most of the games, but of the two played, Petoskey was victorious. At the first annual Big Eight Class B Meet, held at the Petoskey-Bay View Golf Club, Petoskey placed fourth.

Mr. Roberts and Mr. MacMillian deserve much credit for their coaching.

Heroes of the Gridiron . . .



Coach Middlesworth

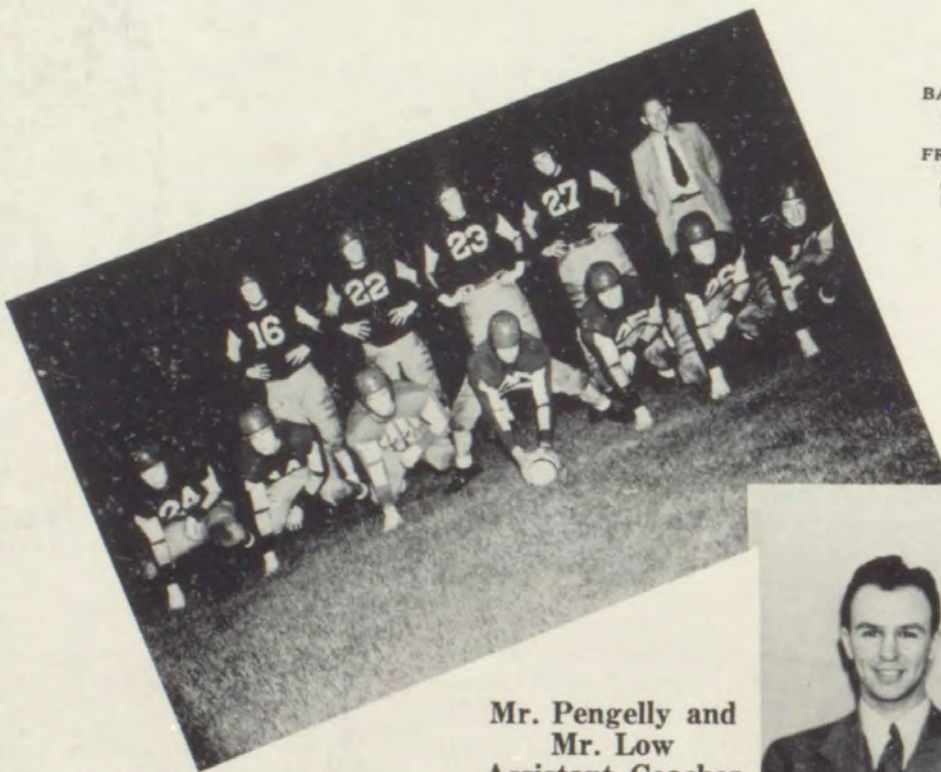
Coach John Middlesworth deserves much credit for the good showing of the Blue and White this season. Competition for the Northern Michigan Big Eight title was very strong and Coach Middlesworth had only four veterans back around whom to build the team. Lettermen were Ketchum, left guard; Greenwell, full back; Fochtman, left half; Switzer, tackle.

Honored as most valuable player was Captain Dale Switzer. Those chosen on the Michigan Honor Squad were: Switzer, tackle; Ketchum, guard; Fochtman, half back. On the second team Ecker as guard, and Hayner as fullback were listed.

Awarded letters this season were: Switzer, Campbell, Cooper, Ecker, Fochtman, Friend, Glaser, Greenwell, Harbaugh, Hayner, Hinds, Horniman, Rehkopf, Kelley, Ketchum and Kalbfleisch. Student manager, Harry Cosgrove, also received a letter.

SEASON'S SCORES

0	Mancelona	Petoskey	45
0	Boyne City	Petoskey	6
0	Harbor Springs	Petoskey	0
7	Ludington	Petoskey	0
25	Alpena	Petoskey	0
0	Rogers City	Petoskey	7
0	Cheboygan	Petoskey	12
12	Traverse City	Petoskey	0
<hr/>			<hr/>
44			70



BACK ROW (Standing)—Don Greenwell, Kieth Horniman, Hugh Winnell, Jack Harbaugh, Coach Middlesworth.

FRONT ROW—Bob Friend, Paul Rehkopf, Eugene Ecker, Wallace Zaiger, Cy Ketchum, Dale Switzer, Pat Campbell.

**Mr. Pengelly and
Mr. Low
Assistant Coaches**





Harold Hayner



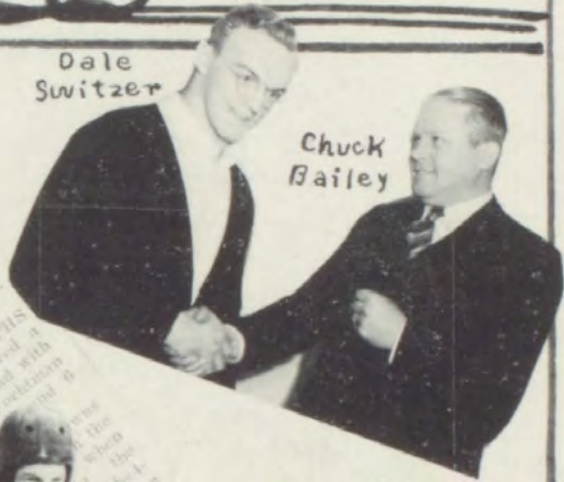
Paul Rehkopf



Jack Harbaugh



Gerry Jacobs



Dale Switzer

Chuck Bailey

Northmen Down Cheboygan Chiefs

Fochman's 79-yard run and touchdown pass in Cooper, both in the second quarter, crashed the Cheboygan Chiefs 12-0 in the last home game of the season on Oct. 31.

Lady Luck smiled for PHS when the Northmen recovered a fumble on their own 21, and with a brilliant intercepting, Fochman broke away for 79 yards and a touchdown.

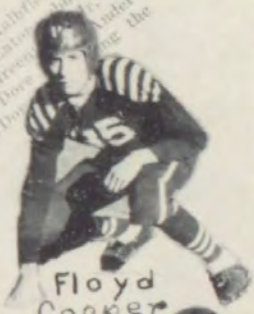
Cooper, Kelly, Katherbach, Jacobs, Hinds, and Katherbach for PHS. Schryer, Potts, and McHugh for Cheboygan.



Kieth Horiman



Vincent Fochman



Floyd Cooper



Cy Ketchum



Russell Hinds



Don Greenwell



Bob Kelly



Eugene Ecker



Pat Campbell

Victory Is Their Habit

The Petoskey Northmen, coached by John Middlesworth, came through the season with a 50-50 average. Taking a great many things into consideration, the Northmen did well. The team stepped out to win 6 of 9 games during the first semester. At this stage of the season the eighth-semester eligibility ruling removed our captain and most outstanding player, Hugh Winnell, from the line-up.

Dave Ross was the acting captain beginning the second semester. Charles Baumgartner, George Bowman, Floyd Cooper, Dick Friend, Wilbur King, and Jack Harbaugh completed the line-up for the year.

- 13 Boyne City
- 18 Charlevoix
- 15 Cadillac
- 26 Alpena
- 27 Boyne City

- Petoskey 26
- Petoskey 30
- Petoskey 28
- Petoskey 18
- Petoskey 25

- 22 Traverse City
- 24 Harbor Springs
- 16 Cheboygan
- 20 Cadillac
- 30 Charlevoix
- 41 Traverse City
- 26 Harbor Springs
- 35 Rogers City
- 37 Cheboygan

- Petoskey 21
- Petoskey 25
- Petoskey 23
- Petoskey 29
- Petoskey 20
- Petoskey 19
- Petoskey 15
- Petoskey 35
- Petoskey 25

The Northmen dropped their Regional Championship of 1941 to Traverse City by a score of 31 to 19.

The second team, coached by Mr. Bartlett, should be mentioned for its exceptionally good play during the year. The squad went through the season with only two losses. Jacobs, White, Kalbfleisch, Colley, Behan, Case, Cooper, Cosgrove, Kelly, Lucas, Rehkopf, Switzer, and Tounain were the players on the second team.



TOP ROW—T. A. Trelow, athletic manager; Harry Cosgrove, student manager; Maurice Case, Ed White, Owen Behan, Charles Gaumer, Harry Maybank, Louis Tounain, Coach Middlesworth.
 FRONT ROW—George Bowman, Wilbur King, Charles Baumgartner, Floyd Cooper, Hugh Winnell, Dave Ross, Dick Friend, Jack Harbaugh.



J. J. MIDDLESWORTH



LYNN BARTLETT



TOP ROW (Left To Right)—T. A. Trelow, athletic manager; Gordon Kalbfleisch, Basil Switzer, Merle Cosgrove, Coach Bartlett.
 SECOND ROW—Gerald Cooper, Bob Kelly, Jerry Jacobs, Paul Rehkopf, Bob Lucas.

PHS Wins Second Cage Game 30-18

Petoskey won their second game in a hot battle at Charlevoix on Monday night, 30-18. Scoring was as follows: Petoskey 10, Charlevoix 18. Petoskey was led by Wilbur King with 10 points. Charlevoix was led by Charles Baumgartner with 10 points.



Wilbur King

Player	Pos	Pts	Reb	Ass	Stk	Blk	Min
Wilbur King	RF	10	3	1	1	0	15
Charles Baumgartner	LF	10	2	1	1	0	15
George Bowman	C	4	1	1	1	0	15
Jack Harbaugh	RF	2	1	1	1	0	15
Harold Maybank	LF	1	1	1	1	0	15
Ed White	C	1	1	1	1	0	15
Dick Friend	RF	1	1	1	1	0	15
Floyd Cooper	LF	1	1	1	1	0	15
David Ross	C	1	1	1	1	0	15

PHS also entered the game for Petoskey.



Charles Baumgartner

PHS Crushes Boyne In Season Opener

Petoskey opened the 1931-32 basketball season here last Friday night, 26-13, by defeating the Boyne City team. The game was a hard fought one, but Petoskey received the ball on the opening tip and then made a quick start. Petoskey in the first quarter led 4-12; 8-19; 14-26; 20-32; 26-38; 30-42; 34-48; 38-54; 42-60; 46-66; 50-72; 54-78; 58-84; 62-90; 66-96; 70-102; 74-108; 78-114; 82-120; 86-126; 90-132; 94-138; 98-144; 102-150; 106-156; 110-162; 114-168; 118-174; 122-180; 126-186; 130-192; 134-198; 138-204; 142-210; 146-216; 150-222; 154-228; 158-234; 162-240; 166-246; 170-252; 174-258; 178-264; 182-270; 186-276; 190-282; 194-288; 198-294; 202-300.



captain Winnell



Ed White

Cellar Dwellers Lose To PHS

George Bowman, PHS junior, was the hero of the evening. He scored 27 points after sinking a long shot in the closing minutes. Bowman also took some of the spectators' breathless and hoarse. Rogers captured a small lead early in the tilt and held it until the final minutes of play when Case and King scored to put the Northern ahead. Bowman who had earlier captured it for Rogers in the first half, followed him in the second half. Bowman who had earlier captured it for Rogers in the first half, followed him in the second half. Bowman who had earlier captured it for Rogers in the first half, followed him in the second half.



George Bowman



Dick Friend



Alpena-PHS Tilt Goes To Visitors

The power Alpena Greenies defeated PHS in a variety of ways. The ball was in motion. The Alpena slowly whose shots through the net. The Alpena slowly whose shots through the net. The Alpena slowly whose shots through the net.



Jack Harbaugh



Harold Maybank



Gerry Jacobs

David Ross



Floyd Cooper





Time out between scenes.



Late Again



Studying Biology



Our Cafeteria Cook



Sociology Class visits the State Hospital

" P stands for Petoskey.



Harry tells them how



Most Popular Boy
PAT Campbell

Most Versatile Girl
Lillian Jo Ann Schneider



Class Wrecker
Dale Switzer

Most Musical
SHIRLEY SCHWITZ



Class Artist
Rylene West

"I think I'll get it for best looking?"



Best Dressing Girl
Ruth Ann Schomburg



Best Dancer
Floyd Feltz



Most Helpful
Dixie Thompson



Class Leader
ED WICKER



Most Original
Leona Kunkel



Most Popular Girl
Mary Lou Larson



Best Looking Boy
VINNY KUCHMAN



Most Popular Boy
HUGH WINHALL

Best Looking Girl
Charlita Hess



CLASS ELECTIONS



Class Cynic
Janice Keller



Class Clown
Ed Hetchum



Most Likely to Succeed
Audrey Thompson



Best Looking Boy
Dick Yeland

Blame Them for this book.



Associate Editors
Patty Stafford
Audrey McPherson

Photography Staff — John Steffel, Editor; Marian Mollhagen, Harry Larson, John Dalton, Beverly Hoffer.
Activities Staff — Audrey McPherson, Editor; Barbara MacMillan, Alyce Friend, Patsy Donnelly, Jayne Ellen North.
Sports Staff — Iris Stansberry, Jerry Behan.
Organization—Mary Lou Larson, Editor; Evelyn Campbell, June Bremmeyr, Juanita Thompson, Vera Jean Grossman.
Seniors — Patty Stafford, Associate Editor; Ruth Ann Schomberg, Mary Rita Hegener.
Sales Staff — Russell Hinds, Manager; Janice Keller, Assistant Manager; Salesmen — Shirley Schmitt, Donna Crandall, Amy Paige, Gladys Taylor, Bill Lamser, Wanda Crandall, Elinore Sanborn, Jerry Behan, Dorothy Whitfield, Reva Compton, Arda Schaefer.
Cover — Ann Dalton.

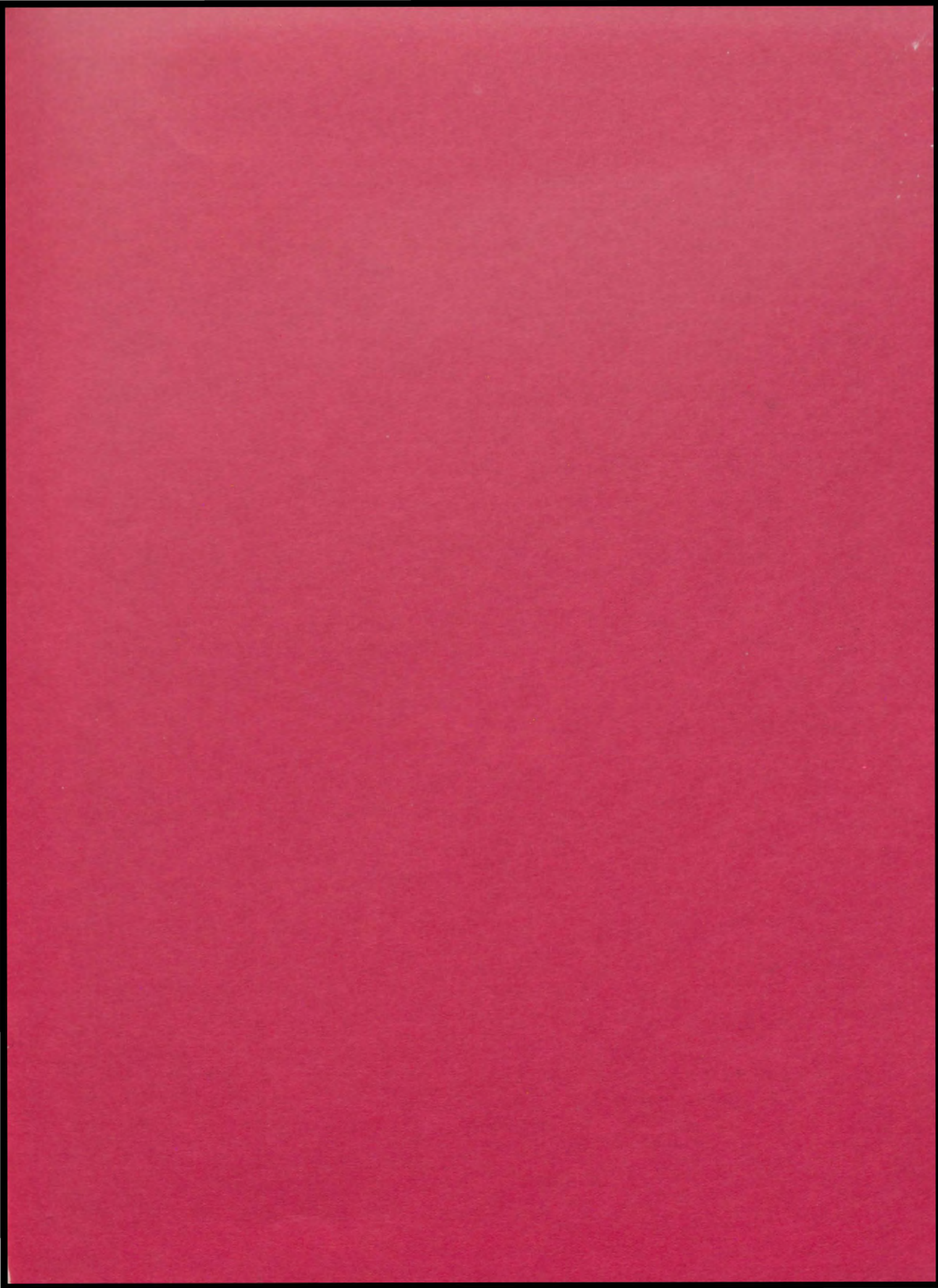
1942 PETOSEGAN

*Published by the members of the senior Class of
Petoskey High School
PETOSKEY, MICHIGAN*

Patricia Doherty Editor-in-chief
Arlene Wurst..... Art Editor
Pat CampbellBusiness Manager
John F. McDonald.....Faculty Adviser
Photographs by.....Foley and Robert Benjamin

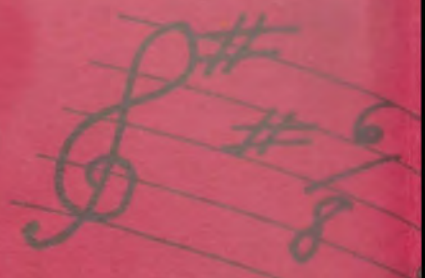
Lithoprinted by UNIVERSITY LITHOPRINTERS, Ypsilanti, Michigan
Cover Engraving by PONTIAC ENGRAVING COMPANY, Chicago
Covers by KOVER KRAFT, Chicago
Binding by ENGDAHL BINDERY, Chicago



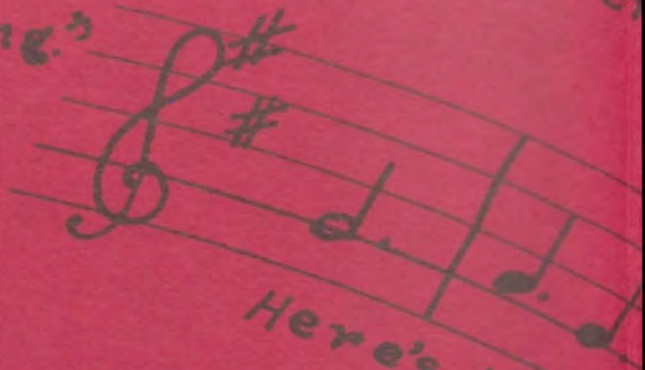




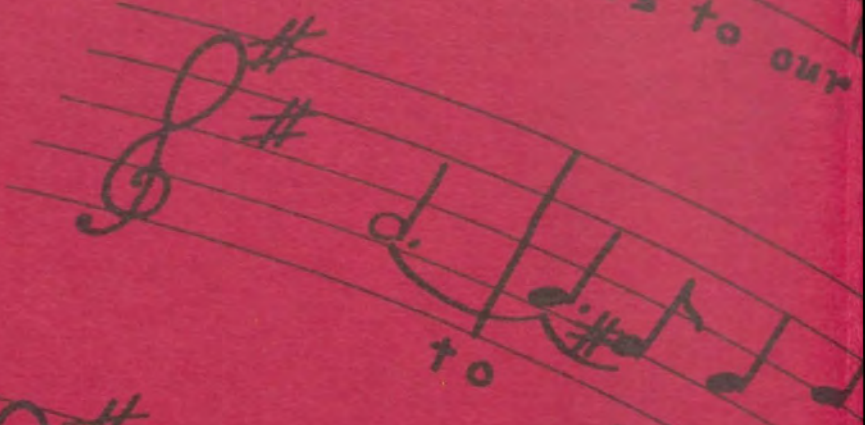
"Let's all
Sing."



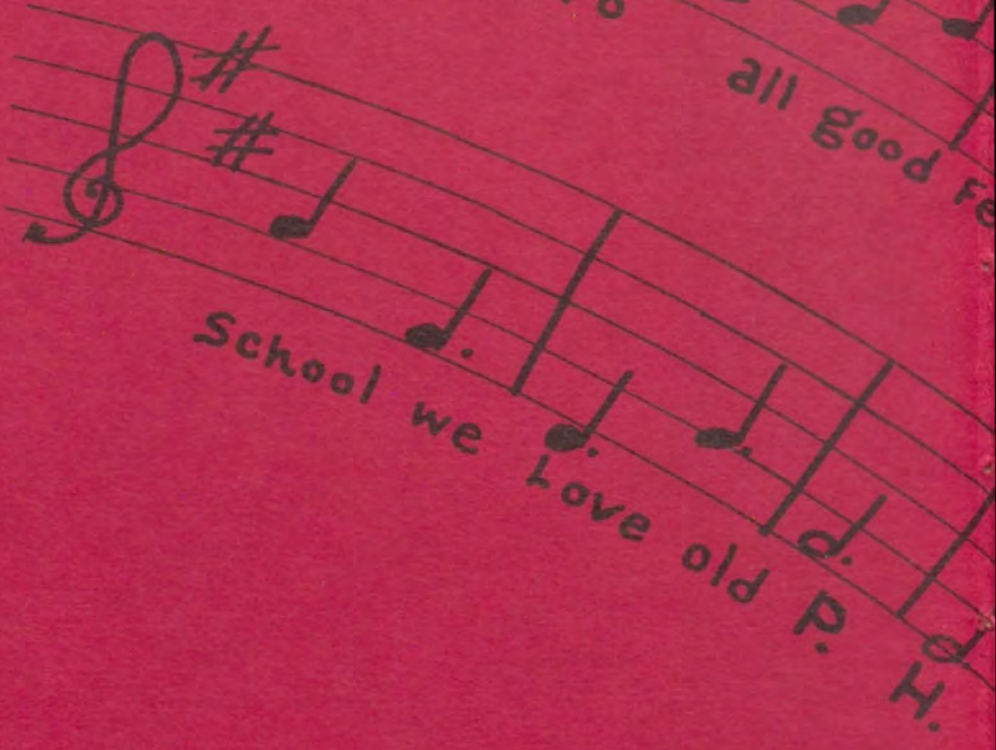
He



Here's to our



to all good fe



School we Love old P. H.

HAIL PETOSKEY

to pe-tos-key High School we

ors of the Blue and white Rah! Rah!

ws and their suc-cess Here's to the



