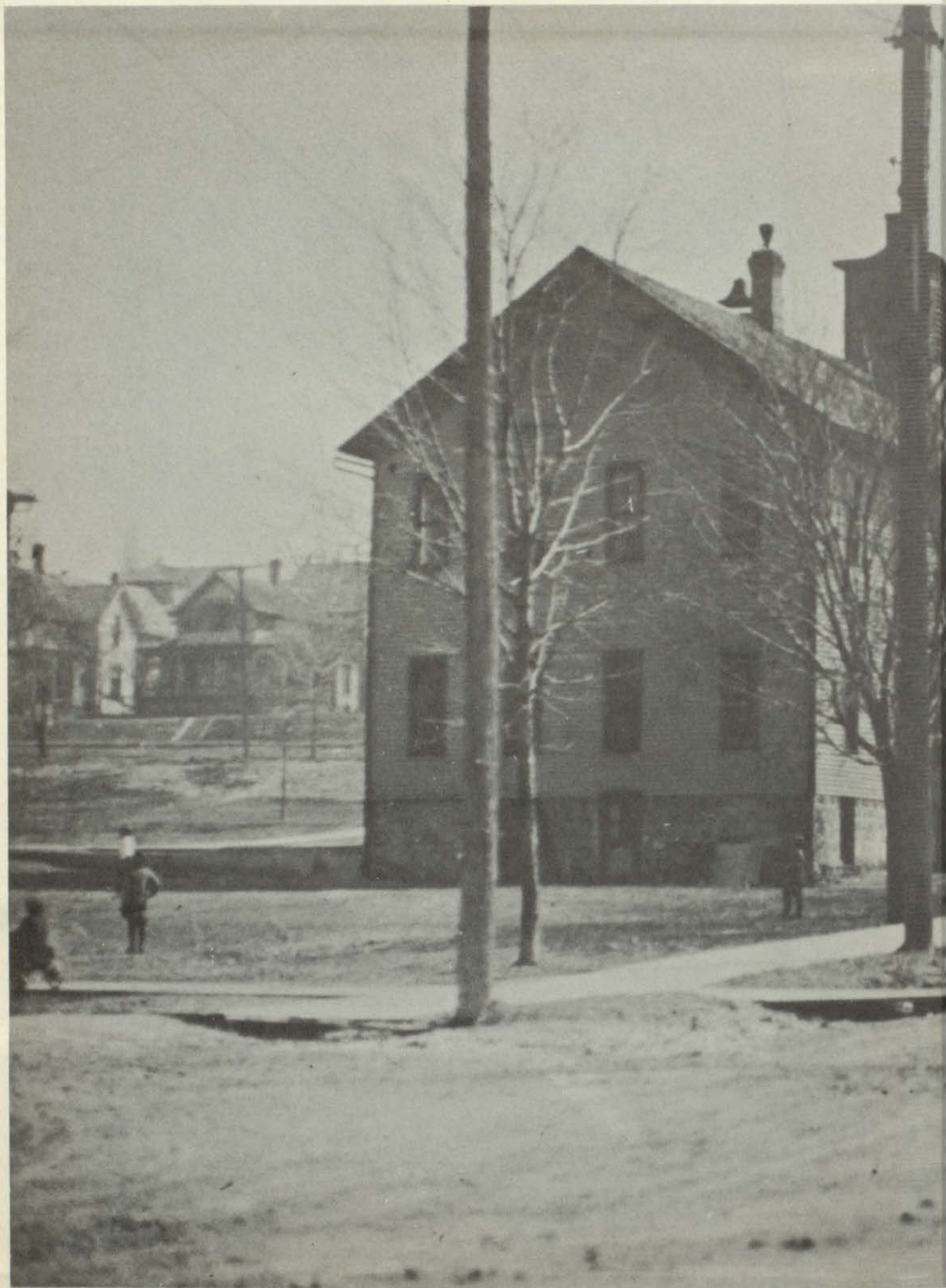
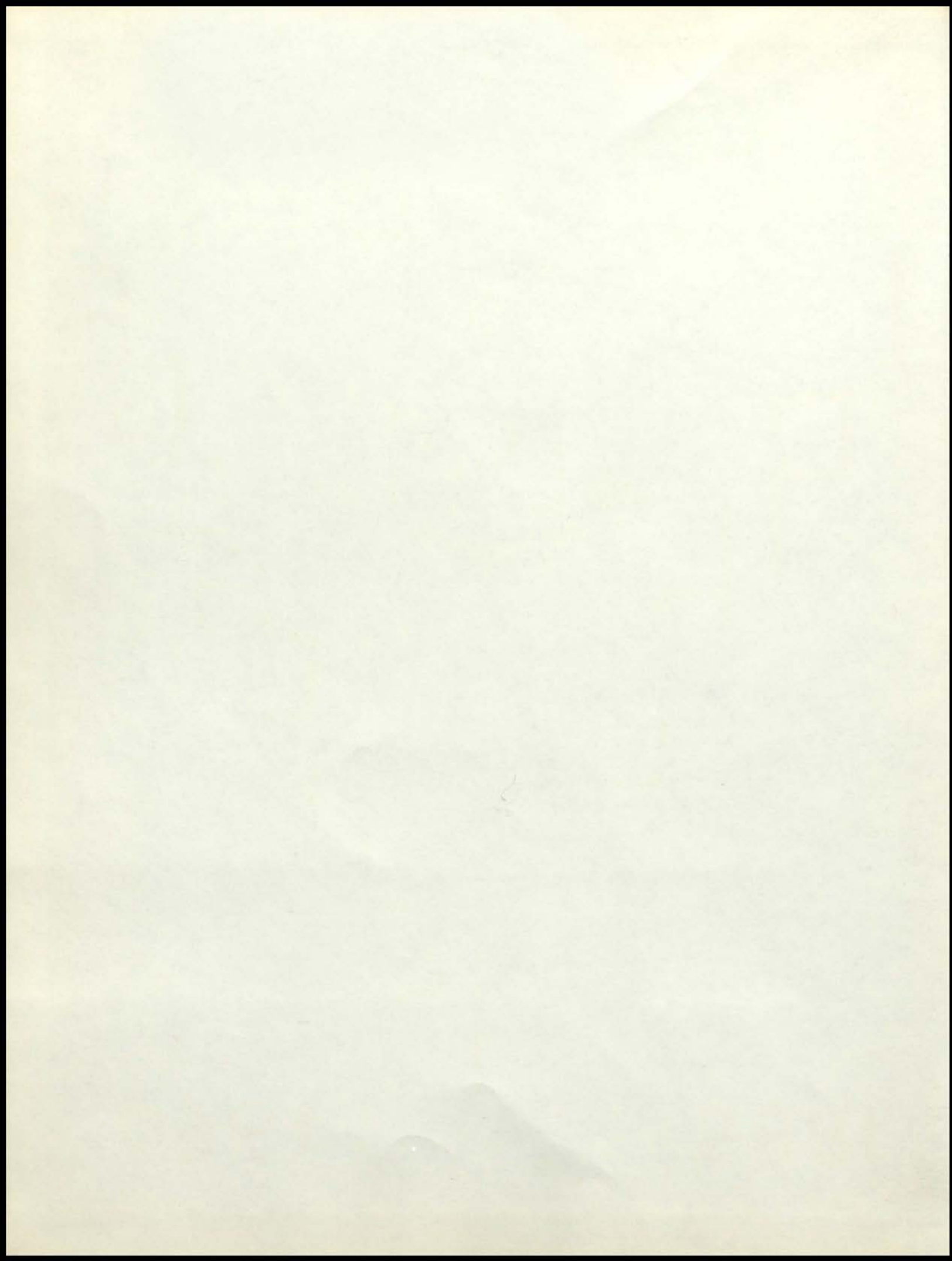




THE PETOSEGAN







We,
the 75th Graduating
Class of Petoskey High School
present with great pride
the



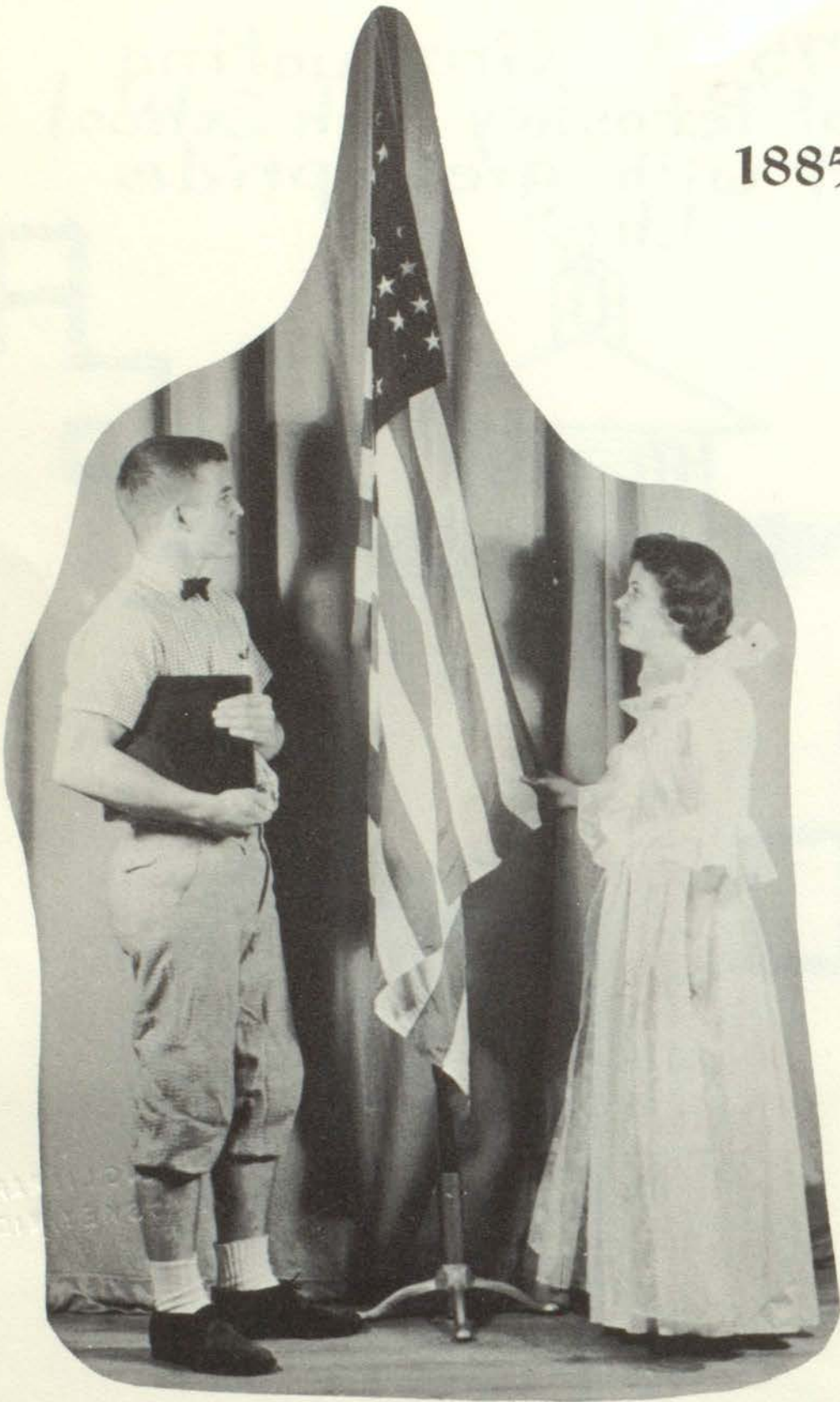
1
9
6
0
P
E
T
O
S
K
E
Y
H
I
G
H
S
C
H
O
O
L

PUBLIC LIBRARY
PETOSKEY, MICH.

1885

1960

1885.



.....1960



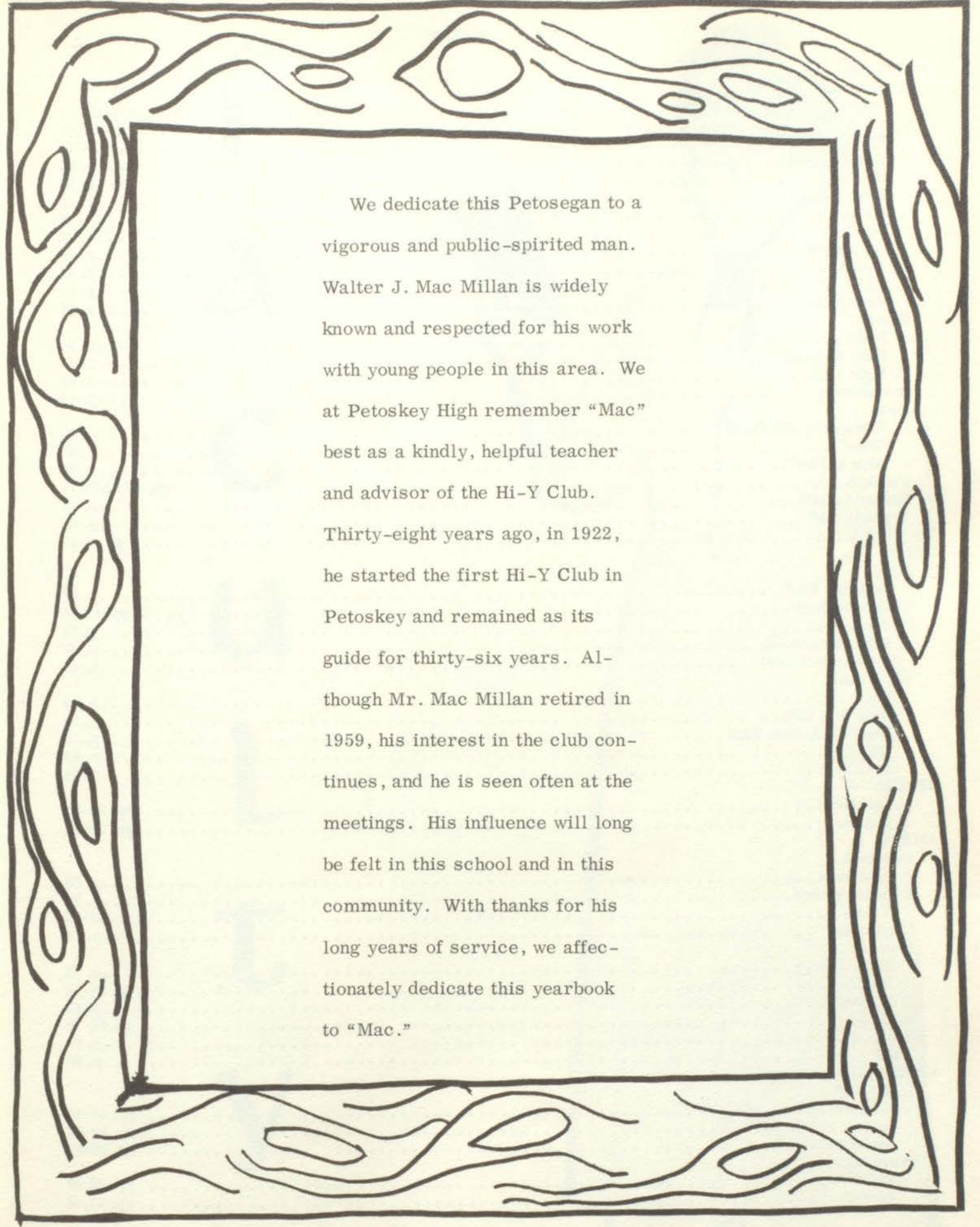
The first graduation exercise of Petoskey High School took place in 1885—just seventy-five years ago. At that time it was an unusual event when a young person completed a full high school course. In some instances no further education than the mastery of the "Three R's" was required to begin a teaching career! Although we often complain about the foreign languages, complicated science courses, social studies, and arts of our present curriculum, we must acknowledge a deep feeling of gratitude to those who have made our present education so much more complete than that of an earlier day.

Although it is not unusual to complete a high school education today, the same pride of accomplishment grips each graduate of 1960 that was evident in 1885; the same eagerness to begin a new walk of life; the same gnawing fear of the inventions of his day; the same strange mixture of relief at having obtained a diploma, and reluctance to leave the school he has secretly loved for thirteen years.

This year of 1960 represents the Diamond Anniversary of our school. For seventy-five years graduates have gone from its doors into a challenging new life. May we humbly accept this challenge with a genuine determination to give the world what it has the right to ask of every generation—our very best.



Walter J. MacMillan



We dedicate this Petosegan to a vigorous and public-spirited man. Walter J. Mac Millan is widely known and respected for his work with young people in this area. We at Petoskey High remember "Mac" best as a kindly, helpful teacher and advisor of the Hi-Y Club. Thirty-eight years ago, in 1922, he started the first Hi-Y Club in Petoskey and remained as its guide for thirty-six years. Although Mr. Mac Millan retired in 1959, his interest in the club continues, and he is seen often at the meetings. His influence will long be felt in this school and in this community. With thanks for his long years of service, we affectionately dedicate this yearbook to "Mac."

TABLE OF CONTENTS

ACTIVITIES

Clubs

Dramatics p. 54
 F F A pp. 56,57
 F T A p. 58
 G A A p. 60
 Hi-Y p. 53
 Honor Society p. 49
 Inkslingers p. 55
 Pep Club p. 61
 Sub Debs p. 58
 Thespians p. 54
 Tri-Hi-Y p. 52
 Varsity Club p. 59

Dances

J-Hop p. 28
 Sadie Hawkins p. 41

Hi-Light Staff p. 51

Homecoming p. 46

Plays

"Cheaper by the Dozen" p. 29
 "Dino" p. 30
 "Nuts in May" p. 29

Shapshots pp. 45,62,71,72

Student Council p. 50

Yearbook Staff p. 48

FACULTY pp. 7-13

MUSIC

Bands

Beginners Band p. 67
 Concert Band pp. 68,69
 Dance Band p. 70
 High School Band p. 70
 Intermediate Band p. 67

Vocal Music

Choir p. 64
 Girls Glee Club p. 66
 Ninth Grade Glee Club p. 66
 Octette p. 65
 Sextette p. 64

SENIORS

Directory pp. 25-27
 Pictures pp. 14-24

SPORTS

Basketball

Intramural p. 83
 Junior Varsity p. 79
 Varsity pp. 80-82

Cheerleaders p. 74

Football

Junior Varsity p. 79
 Varsity pp. 75-78

Golf Team p. 88

Ski Team pp. 84-85

Tennis p. 87

Track p. 86

UNDERGRADS

Senior High

Freshman pp. 38-40
 Juniors pp. 32-34
 Sophomores pp. 35-37

Junior High

Eighth pp. 42,43
 Seventh pp. 43,44

f
a
c
u
l
t
y



administration



WARREN W. LUTTMANN
Superintendent
A.B., Western Mich. Univ.
M.A., U. of M.



OLIVER AHO
Principal
B.S., Northern Mich.
M.A., U. of M.
Advanced Algebra



HELEN KOPER
Secretary to the Superintendent



FRIEDA HELDNER
Bookkeeper



CATHERINE SCHWARTZFISHER
Secretary to the Principal



MARGUERITE BECKLEY
B.S., Central Mich.
8th Grade Advisory
English and Math.
Sub-Deb Advisor
Librarian at N.C.M.C.



CLIFFORD BUCKMASTER
B.S., Ferris Institute
Sophomore Advisory
Commercial



VIRGINIA BUETTNER
B.S., M.S.U.
Home Economics



WILLIAM CATTON
B.S., Western Mich.
M.A., U. of M.
Senior Advisory
Biology
Student Council Advisor



RUTH CHAMBERLAIN
B.S., Central Mich.
Cafeteria Manager
Home Economics



HELEN COLE
B.S., Central Mich.
7th Grade Advisory
Math
Jr. High Student Council
Advisor



CHARLES CROSSER
B.S., Ohio Univ.
7th Grade Advisory
Communication Skills
Social Science



JOHN EMSHWILLER
B.S., M.S.U.
Freshman Advisory
Agriculture
F.F.A. Advisor



JAMES FOWLER
 A.B., Kalamazoo College
 Personnel Director
 Jr. Varsity Basketball Coach
 Jr. High History
 Varsity Club Advisor
 Assistant Football Coach
 Tennis



STANLEY GARTHE
 B.S., Western Mich.
 Junior Advisory
 Science & Chemistry
 Visual Education Advisor



ALDEN HOWARD
 B.S., Western Mich.
 Machine Shop and
 Driver-Training



YVONNE HOWARD
 B.S., Central Mich.
 7th Grade Advisory
 English
 Petosegan Advisor



KATHERINE INGLIS
 A.B., U. of M.
 Sophomore Advisory
 Government & English
 Social Studies
 Honor Society Advisor



JAMES JINSKY
 B.S., Stout State College,
 Menomonie, Wisconsin
 8th Grade Advisory
 Shop and Math.



DALE McALVEY
 B.S., M.S.U.
 Co-op Training
 Guidance and Counseling
 Adult Education
 Director of Summer School
 Agriculture
 F.F.A. Advisor



JANE MARKS
 B.M., North Central
 Librarian



MARCIA MILLER
 B.S., M.S.U.
 Freshman Advisory
 Home Economics



WILMER R. MOYER
B.S., Ithaca College
7th Grade Advisory
Music



MARIANNA E. OLSON
B.S., Northwestern
Freshmen Advisory
English and Speech
Dramatics Advisor
Thespian Advisor



ELAINE PRICE
B.E., Wisconsin State College
Junior Advisory
Commercial
Pep Club Advisor
Cheerleaders Advisor



DONALD F. QUADE
A.B., U. of M.
Senior Advisory
Hi-Y Advisory



MARY RICHWINE
B.S., Western Mich.
Gym
G.A.A. Advisor



ANNA SIKARSKIE
A.B., Northern Michigan College
of Education
Junior Advisory
English and French
Tri-Hi-Y Advisor



MAX SMITH
B.M., M.S.U.
8th Grade Advisory
Music



WILLARD S. SPLAN
B.S., M.S.U.
Gym
Ski Team, Track, and
Reserve Football Coach



JOHN STEWART
A.M., M.S.U.
8th Grade Advisory
Art and History



RUTH E. THOMPSON
A.B., Lake Erie College
Senior Advisory
English and Latin
Inkslinger Advisor



FLORENCE TITUS
B.S., U. of N.Y.,
Buffalo, N.Y.
8th Grade Advisory
English
Reading Program
F.T.A. Advisor



T. ARTHUR TRELOAR
Northern Mich
Freshmen Advisory
Industrial Arts
Athletic Director



ARLENE VAN NESS
A.B., Mt. Pleasant
M.A., U. of M.
Sophomore Advisory
Social Studies
Junior Red Cross
Honor Society Advisor



ALVIN J. VAN WIE
A.B., Wooster, Ohio
Sophomore Advisory
Football Coach
Sociology and Science
Varsity Club Advisor
8th Grade Basketball



DOROTHEA VRATANINA
B.A., Eastern Mich.
M.A., U. of M.
Senior Advisory
English & Journalism
Hi-Light Advisor



RONALD WHITE
B.S., Western Mich.
7th Grade Advisory
General Science
Assistant Football Coach
Varsity Club Advisor
Jr. High Basketball and



ROBERT F. WOODRUFF
B.S., U. of M.
7th Grade Advisory
Social Science



ATHAN ZOGRAPHOS
B.S., M.S.U.
Basketball Coach
Junior Advisory
Math.
Varsity Club Advisor
Golf



Emery Belmer, Ernie Belmer, Jim Belmer, Olin Brecheisen



Alma Cessar



Fletch Johnson



Mrs. Lamparter, Mrs. Sarna



Mrs. Eaton

S

E

N

I

O

R

S

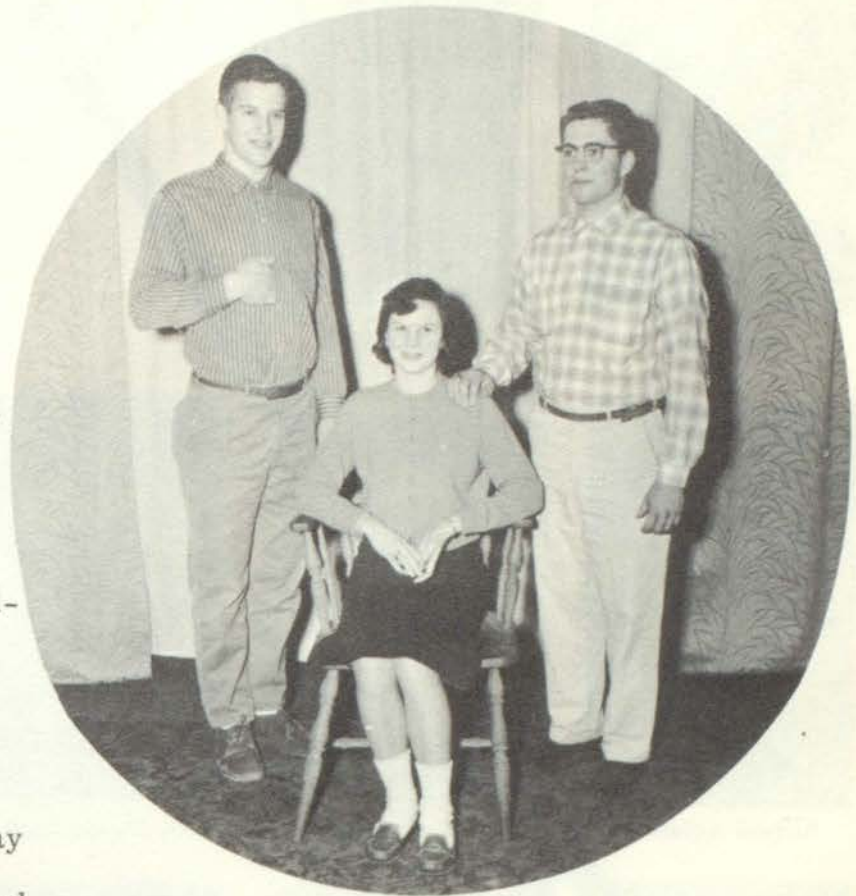


SENIOR OFFICERS

The future was uncertain when we entered high school in 1956, but the freshman year quickly sped by as we became accustomed to the different environment of high school participation.

As sophomores life was worry-free and gay until our first thousand-word theme was forced upon us.

Picking up tempo, time swiftly moved on for our junior year. Joyful hours were spent planning and preparing our Junior-Senior Banquet at the Ramona. Our J-Hop, "Sayonara," enchanted everyone and proved to be very successful. Our float, "The Team That Can", received highest honors at the Homecoming festivities. Our junior play was a light comedy, "Nuts in May."



John Rigg Vice-President
Rena Martinchek Secretary-Treasurer
Jack Hiller President

Queen Mary Switzer and her court represented our class as we proudly watched our float, "It's In Our Reach", place second in the third annual Homecoming. For two weeks we tried our skills at salesmanship during our magazine drive. "Dino", our senior play, was one of the most difficult and dramatic plays ever put on by a senior class. In the spring we were honored at a most enjoyable J-Hop. Every moment was filled with adventure. The climax of the year came when we slowly walked up to receive our diplomas. The memories of these years that shaped our futures will always be happy ones.



Josy Abad



Betty Allen



Eloise Allen



Ruth Ann Allen



Barbara Anderson



De Wayne Annis



Joanne Annis



Ted AuClaire



Lowell Baird



Patsy Barker



Carol Bates



Jere Beauchamp



Eileen Bifoss



Marvin Bixby



Marge Blanchard



Stella Bodzick



Grant Bolden



Ted Borisch



Leone Brecheisen



James Brier



Eugene Brown



Richard Brown



Sheldon Buckmaster



Helen Burtch



Lou Byars



Charlotte Cetas



Raymond Chapin



Mary Clements



Ed Colwell



Aldwyn Cone



Carolyn Crawford



Marian Croff



Maxine Croff



Patsy Crow



Henry Culp



Gwen Cumberland



John Curtiss



Suzanne de la Vergne



Linda Dielman



Dennis Fineout



Harvey Gibson



Judy Gokee



Dee Guillaume



William Haines



Nancy Halstead



Carmen Hand



Elsie Hankins



Arla Haskell



Jay Hastings



Jack Hiller



Charles Hoch



Ron Holck



Charles Hooker



Roger Hull



Dennis Johnson



Stan Johnson



Mary Sue Jones



Bessie Keller



Maxine Kemp



Shirley Kent



Charles Kiebel



Kenneth Klumpp



Judy Kobe



John LaTocha



Larry Laughlin



Duane Lawson



David Leroue



Mary Leshar



Ron Levingsten



Raymond Lewis



Cindy Lovelace



Carol Luebke



John Lybarker



Barry Malone



Rena Martinchek



Marjorie Matz



Lynn McCartney



Margaret McCutcheon



Mary Ellen McGeath



Joe Merrill



Diane Miller



Bruce Morgan



Janice Moser



Diane Mundhenk



Bert Norris



Lila Orient



Thomas Paxton



John Peck



Ralph Perry



James Ranney



John Rigg



Michael Rosenow



Thomas Rowe



Robert Schmoldt



Ed Schroeder



Robert Shater



Delbert Skinner



Carolyn Smith



Judy Spears



Betty Stanley



Betsy Stevens



Norm Stevens



August Stolt



Bonnie Stowe



Mary Switzer



Kathy Taylor



Cynthia Tillotson



Marcia Veurink



Marvin Veurink



John Wanamaker



Tom Weinrich



Fred Wheaton



Jean Wimer



Robert Woodruff



Toni Yennor



Jack Zaiger



Mr. Catton, Mrs. Vratana, Mrs. Thompson, Mr. Quade.

- JOSY ABAD**
slingers, 2,3; Mixed Ensemble, 3; Sextette, 2,3.
Choir, 2,3; F.H.A., 1,2, Vice-President; Ink-
- BETTY LOU ALLEN**
Art Club, 2,3; Tri-HiY, 2,3,4; G.A.A., 1,2,3;
F.H.A., 1,2,3; Dramatics Club, 1,2,3,4; Thes-
pians, 3,4.
- ELOISE ALLEN**
Band, 1,2; Choir, 2,3,4; G.A.A., 2; Girls Glee
Club, 1,2,3,4; Mixed Ensemble, 3; Sextette,
2,3,4.
- RUTH ANN ALLEN**
Band, 1,2,3,4; Dramatics, 2,3,4, Secretary-
Treasurer; F.H.A., 1,2; Girls Glee Club, 1; Pep
Club, 1,2; Petosegan Staff, 4; Junior Play;
Student Council, 4, Vice-President; Thespians,
3,4, Secretary-Treasurer.
- BARBARA ANDERSON**
Girls Glee Club, 1,2; Inkslingers, 2,3,4.
- DE WAYNE ANNIS**
Basketball, 2; Choir, 2; Football, 1,2,3,4; Boys
Glee Club, 1; Hi-Y, 2,3,4; Inkslingers, 2,3;
Junior Play; Student Council, 3; Thespians,
3,4; Track, 1,2,3,4; Varsity Club, 3,4.
- JOANNE ANNIS**
Art Club, 3; Junior Play; Tri-Hi-Y, 3,4.
- TED AUCLAIRE**
Inkslingers, 2; Junior Play; Thespians, 3,4.
- LOWELL BAIRD**
F.F.A., 3,4; Track, 4.
- PATSY BARKER**
F.H.A., 2,3.
- VERN BARNES**
F.F.A., 2,3.
- CAROL BATES**
G.A.A., 1,2,3, Vice-President, 3; Girls Glee
Club, 1,2; Pep Club, 1,2,3,4; Ski Team, 1,2,3,4;
Sub Debs, 1,2,3,4.
- JERE BEAUCHAMP**
- EILEEN BIFOSS**
Dramatics, 2,3,4; F.H.A., 1,2, Historian; Hi
Light Staff, 3; Inkslingers, 2; Petosegan Staff,
4, Paste-up Editor; Junior Play; Thespians,
3,4; Tri-Hi-Y, 3; Quill and Scroll, 3,4.
- MARVIN BIXBY**
- MARGE BLANCHARD**
G.A.A., 1,2, Vice-President; Hi Light Staff, 3;
Quill and Scroll; Tri-Hi-Y, 2,3,4, Vice-Presi-
dent; National Honor Society, 4.
- STELLA BODZICK**
F.H.A., 1,2; Girls Glee Club, 3,4.
- GRANT BOLDEN**
- TED BORISCH**
Football, 2,3,4; Hi-Y, 4; Ski Team, 3,4.
- LEONE BRECHEISEN**
Girls Glee Club, 1; Tri-Hi-Y, 2,3.
- JAMES BRIER**
Band, 3.
- EUGENE BROWN**
Basketbal, 1,2; Football, 2,3,4; Student Coun-
cil, 4; Thespians, 4, President; Junior Play, 3;
Senior Play, 4; Dramatics, 4; National Honor
Society, 4.
- RICHARD BROWN**
Basketball, 1; Football, 1,2,3,4; Hi-Y, 2,3,4;
- Petosegan Staff, 4, Sports Editor; Varsity
Club, 4.
- SHELDON BUCKMASTER**
Basketball, 1,2; Football, 1,2, manager, 3,4;
Boys Glee Club, 1; Hi-Y, 2.
- HELEN BURTCH**
Band, 1,2,3,4; Choir, 1,2,3,4; F.H.A., 1,2; Ink-
slingers, 2,3; Student Council, 1; Tri-Hi-Y, 2;
Sextette, 2,3,4.
- LOU BYARS**
G.A.A., 2
- CHARLOTTE CETAS**
Choir, 2,3,4; Girls Glee Club, 1.
- DAN CHAMPION**
Band, 1,2,3,4; Dance Orchestra, 2,3,4.
- RAYMOND CHAPIN**
Basketball, 1,2,3,4; Football, 1,2,4; Hi Light
Staff, 4; Hi-Y, 3,4; Thespians, 3,4; Track, 1,2.
- MARY CLEMENTS**
Choir, 4; Dramatics, 2,3; F.H.A., 1; F.T.A., 4,
Vice-President; Girls Glee Club, 1; Inksling-
ers, 2,3,4, Vice-President, 3; Petosegan Staff,
4, Copy Editor Tri-Hi-Y, 2,3; National Honor
Society, 4.
- ED COLWELL**
Band, 2,3,4; Basketball, 2,3,4; Choir, 3,4; Foot-
ball, 3; Petosegan Staff, 4; Varsity Club, 3,4.
- ALDWYN CONE**
Football, 1,2; F.F.A., 1,2,3,4.
- ARTHUR CONE**
Choir, 3; Mixed Ensemble, 2; Octette, 2.
- CAROLYN CRAWFORD**
Art Club, 1,2; Choir, 1,2,3,4; F.H.A., 1; Girls
Glee Club, 1,3,4; Petosegan Staff, 4; Mixed
Ensemble, 3; Sextette, 3,4.
- MARIAN CROFF**
F.H.A., 2; G.A.A., 2.
- MAXINE CROFF**
Girls Glee Club, 1.
- PATSY CROW**
Inkslingers, 2; Student Council, 2; Tri-Hi-Y,
3,4.
- GWEN CUMBERLAND**
Choir, 3; Cheerleading, 2; Dramatics, 2,3,4;
F.H.A., 1; G.A.A., 1,2,3,4; Girls Glee Club,
1,2,3,4; Junior Play; Thespians, 3.
- HENRY CULP**
Golf, 1,2,3.
- JOHN CURTISS**
Football, 1,2,3,4; Track, 1,2,3,4; Varsity Club,
4.
- SUZIE DE LA VERGNE**
Hi Light Staff, 2,3,4, Associate Editor, 3;
Choir, 3,4; Petosegan Staff, 4; Tri-Hi-Y, 2,3,4.
- LINDA DIELMAN**
Girls Glee Club, 4; Hi Light Staff, 1.
- DALE DUNSHEE**
Choir, 2; F.F.A., 1,2,3,4.
- DENNIS FINEOUT**
Football, 1; Tennis, 1.
- MERLE FRALEY**
F.F.A., 1,3,4.
- HARVEY GIBSON**
Basketball, 4; F.F.A., 1; Golf, 3; Tri-Hi-Y, 1.
- FRED GLAZIER**
F.F.A., 3.

- JUDY GOKEE**
F.H.A., 1,2,3, Treasurer; G.A.A., 1; Girls Glee Club, 1,2; Pep Club, 1; Tri-Hi-Y, 1.
- DEE GUILLAUME**
Band, 1,2,3,4; Girls Glee Club, 1; Hi Light Staff, 3,4; Inkslingers, 3; Pep Club, 1,2,3,4, Secretary; Petosegan Staff, 4; Tri-Hi-Y, 2,3,4; Dance Orchestra, 3.
- WILLIAM HAINES**
Hi-Y, 3,4; Junior Play; Senior Play; Student Council, 1; Dramatics, 4; National Honor Society, 4.
- NANCY HALSTEAD**
Choir, 2,3,4; Cheerleading, 2,3,4; G.A.A., 1,2; Girls Glee Club, 1; National Honor Society, 3,4, Secretary-Treasurer; Pep Club, 1,2,3,4; Petosegan Staff, 4; Student Council, 2,3, Vice-President; Tri-Hi-Y, 2,3,4.
- CARMEN HAND**
F.H.A., 2; G.A.A., 2; Tri-Hi-Y, 3.
- ELSIE HANKINS**
F.H.A., 1; G.A.A., 1; Girls Glee Club, 1.
- ARLA HASKELL**
Art Club, 3; Dramatics, 2,3,4; F.H.A., 1,2; F.T.A., 4; Girls Glee Club, 1; Hi Light Staff, 3,4; Inkslingers, 2,3; Junior Play; Thespians, 3,4 Tri-Hi-Y, 2,3.
- JAY HASTINGS**
Band, 1,2; Basketball, 1,2; Class Officer, Vice-President, 2, President, 3; Football, 1,2,3,4; Inkslingers, 2,3; Student Council, 2,3; Track, 1,2; Varsity Club, 3,4; National Honor Society, 4.
- JACK HILLER**
Choir, 2,3,4; Class Officer, Vice-President, 1, Secretary-Treasurer, 3, President, 4; Football, 3,4; F.F.A., 1,2,3,4, Treasurer, 3; Boys Glee Club, 1; Student Council, 4; Track, 3.
- CHARLES HOCH**
Band, 1,2,3,4.
- RONNIE HOLCK**
Hi-Y, 3,4; Track, 3,4.
- CHARLES HOOKER**
Basketball, 2,4; Student Council, 1.
- KEITH HOWARD**
F.F.A., 1,2,3,4.
- ROGER HULL**
- DENNIS JOHNSON**
- STAN JOHNSON**
- SUKEY JONES**
Band, 1,2,3,4; Dramatics, 2,3,4; G.A.A., 1,2,3,4, President, 3; Treasurer, 4; Inkslingers, 1,2,3,4, President, 3; Pep Club, 1,2; Petosegan Staff, 4; Junior Play; Dance Orchestra, 3,4.
- BESSIE KELLER**
Hi Light Staff, 3.
- MAXINE KEMP**
Hi Light Staff, 1.
- SHIRLEY KENT**
Class Officer, Secretary-Treasurer, 2; Girls Glee Club, 1,2; Pep Club, 1,2,3,4; Petosegan Staff, 4; Sub Debs, 1,2,3,4; Tri-Hi-Y, 2,3,4; Homecoming Queen's Court 4.
- CHARLES KIEBEL**
F.F.A., 1,2,3,4.
- KENNETH KLUMPP**
Band, 1,2; Basketball, 1,2,3,4; Choir, 2; Football, 2,3,4; Boys Glee Club, 1; Hi-Light Staff, 3; Hi-Y, 2,3,4; Tennis, 2,3,4; Varsity Club, 4; Octette, 2.
- JUDY KOBE**
Pep Club, 2,3,4; Student Council, 3; Tri-Hi-Y, 3,4.
- JOHN LA TOCHA**
Band, 1,2,3,4; Basketball, 1; Tennis, 2; Dance Orchestra, 2,3,4.
- LARRY LAUGHLIN**
Football, 1,3; Hi-Y, 1,2,3, Treasurer, 3; Junior Play, 3,4; Tennis, 3,4.
- DUANE LAWSON**
Choir, 2,3,4; Boys Glee Club; Senior Play.
- DAVID LEROUE**
- MARY LESHER**
F.H.A., 1,2; Pep Club, 3,4.
- RON LEVINGSTON**
Boys Glee Club, 1.
- RAYMOND LEWIS**
Basketball, 1; Football, 1,2,3,4; Track, 1,2,3; Varsity Club, 4;
- CINDY LOVELACE**
Band, 1,2,3,4; Glee Club, 1; Pep Club, 1,2,3,4; Petosegan Staff, 4, Photo Editor; Sub Debs, 1,2,3,4, Treasurer, 2; Tri-Hi-Y, 2,3,4; Dance Orchestra, 3.
- CAROL LUEBKE**
F.H.A., 1; G.A.A., 1; Girls Glee Club, 1,2.
- JOHN LYBARKER**
Band, 1,2; Football, 2; F.F.A., 2,3,4.
- BARRY MALONE**
Band, 1,2,3; Basketball, 1,2,3,4; Football, 1,4; F.T.A., 4; Hi Light Staff, 4; Hi-Y, 4; Track, 1; Varsity Club, 4; National Honor Society, 4.
- RENA MARTINCHEK**
Class Officer, Secretary-Treasurer, 4; F.H.A., 2; F.T.A., 4; G.A.A., 2; Homecoming Queen's Court, 4; National Honor Society.
- MARJORIE MATZ**
F.H.A., 1,2.
- LYNN MCCARTNEY**
Dramatics, 2,3; Hi Light Staff, 3; Pep Club, 2,3,4; Petosegan Staff, 4, Art Editor; Junior Play; Sub Debs, 2,3,4, President; Thespians, 2,3,4, Secretary, President; Tri-Hi-Y, 2,3,4, Secretary, 4.
- PINKY MCCUTCHEON**
Dramatics, 2,3; F.T.A., 4; Girls Glee Club, 1; Inkslingers, 3,4; Petosegan Staff, 4, Associate Editor; Ski Team, 2,3,4; Student Council, 4, Secretary-Treasurer; Sub Debs, 2,3,4; Tri-Hi-Y, 3,4.
- MARY ELEN MCGEATH**
F.H.A., 1,2; F.T.A., Secretary, 4; Sub Debs, 1,2,3,4, Vice-President, 3; Pep Club, 3; Petosegan Staff, 4; Tri-Hi-Y, 2,3,4; Homecoming Queen's Court, 4; National Honor Society, 4.
- JOE MERRILL**
F.F.A., 1,2,3,4; Hi-Y, 1.
- DIANE MILLER**
Band, 1,2,3,4; Dramatics, 2,3,4; F.H.A., 1,2, Secretary; Pep Club, 1,2; Petosegan Staff, 4; Junior; Tri-Hi-Y, 2,3,4.

BRUCE MORGAN

Band, 2,3,4 Class Officer, Vice-President, 3;
Football, 2,3,4, Co-Captain, 4; Junior Play;
Track, 2,3,4; Varsity Club, 3,4, President, 4.

JANICE MOSER

Dramatics, 3,4; Girls Glee Club, 1.

DIANE MUNDHENK

Band, 1,2,3,4; G.A.A., 1,2; Girls Glee Club, 1;
Inkslingers, 1,2,3, Secretary, 3; Petosegan
Staff, 4, Editor; Student Council, 1; Tri-Hi-Y,
3,4; National Honor Society, 3,4.

BERT NORRIS**LILA ORIENT**

G.A.A., 1,2; Petosegan Staff, 4, Senior Editor;
Student Council, 2; Tri-Hi-Y, 2,4.

THOMAS PAXTON

Basketball, 1; Dramatics, 2,3,4; Football Man-
ager, 1,2; Hi Light Staff, 3; Hi-Y, 2,3,4; Ink-
slingers, 2,3; Petosegan Staff, 4, Business Man-
ager; Ski Team, 2,3,4; Tennis, 3,4; Thespians,
3,4; Track, 2.

JOHN PECK**RALPH PERRY**

Football, 1,2,3,4; Basketball, 1; Golf, 3,4; Hi-
Y, 2,3,4; Junior Play; Track, 1,2; Varsity Club,
4.

JAMES RANNEY

Basketball, 1,2,3; Football, 1,3,4, Co-Captain;
Boys Glee Club, 1; Hi-Y, 1,2; Ski Team,
1,2,3,4; Track, 1,3,4; Varsity Club, 3,4, Treas-
urer.

JOHN RIGG

Basketball, 1,2,3,4; Class Officer, Vice-Presi-
dent, 4; Football, 1,2; Boys Glee Club, 1, Hi-
Y, 2,3,4, President, 4; Tennis, 3,4; Track, 1,2;
Varsity Club, 3,4; Vice-President; Octette, 2;
Senior Play.

MIKE ROSENOW

Basketball, 1,2,3,4; Hi Light Staff, 3,4; Hi-Y,
2,3,4; Petosegan Staff, 4; Tennis, 3,4; Varsity
Club, 2,3,4.

BARBARA ROSSELIT**THOMAS ROWE**

Band, 1,2,3,4; Dramatics, 2; Hi-Y, 2; Tennis,
2; Dance Orchestra, 3,4; Senior Play.

ROBERT SCHMOLDT**ED SCHROEDER**

Basketball, 1,2; Manager, 4; Class Officer, Sec-
retary-Treasurer; Football, 1,2,3,4; F.F.A., 2,3;
Golf, 3,4; Hi-Y, 3,4; Petosegan Staff, 4; Track,
1,2; Varsity Club, 3,4.

ROBERT SHAFER

Basketball, 1; Football, Manager, 4.

DELBERT SKINNER

Choir, 2,3,4; Football, 1.

CAROLYN SMITH

Band, 1,2,3,4; Choir, 2,3; G.A.A., 1; Girls Glee
Club, 1; Hi Light Staff, 3; Inkslingers, 2; Na-
tional Honor Society, 3,4; Vice-President, 4;
Pep Club, 1,2,3; Petosegan, 4, Undergraduate
Editor; Junior Play; Senior Play; Tri-Hi-Y,
2,3,4; Dance Orchestra, 3,4; Quill and Scroll,
3,4.

JUDY SPEARS

Band, 1; Dramatics, 1,2,3; G.A.A., 2,3,4; Hi
Light Staff, 3; Junior Play; Thespians, 3,4;
Tri-Hi-Y, 3,4; Quill and Scroll, 3,4.

BETTY STANLEY

F.H.A., 1,2; G.A.A., 2; Hi Light Staff, 3; Pe-
tosegan Staff, 4; National Honor Society, 4.

BETSY STEVENS

F.H.A., 1.

NORM STEVENS

Hi Light Staff, 3; Hi-Y, 3,4, Vice-President;
Inkslingers, 2,3,4; Petosegan Staff, 4; Student
Council, 4, President.

AUGUST STOLT

Football, 1,2,3,4; F.F.A., 1,2,3,4; National
Honor Society, 3,4; Student Council, 2; Track,
4; Varsity Club, 3,4.

BONNIE STOWE

Dramatics, 3; F.H.A., 1,3; G.A.A., 2,3; Girls
Glee Club, 1; Tri-Hi-Y, 4.

MARY SWITZER

Band, 1; Cheerleading, 2,3,4; F.H.A., 1; G.A.A.,
1,2,3; Hi Light Staff, 3,4; Pep Club, 2,3,4,
President, 4; Petosegan Staff, 4; Tri-Hi-Y,
2,3,4; Homecoming Queen, National Honor
Society, 4.

KATHY TAYLOR

F.H.A., 2; Hi Light Staff, 4.

CYNTHIA TILLOTSON

Choir, 3,4; F.H.A., 2; Girls Glee Club, 1,2;
Inkslingers, 2,3,4; Tri-Hi-Y, 2.

MARCIA VEURINK

F.H.A., 1; Girls Glee Club, 1,2; Pep Club,
2,3,4; Sub Debs, 2,3,4; Tri-Hi-Y, 2; Homecom-
ing Queen's Court.

MARVIN VEURINK

Football, 1,2; F.F.A., 1,2,3,4; President, Na-
tional Honor Society, 4.

JOHN WANAMAKER

Basketball, 1; F.F.A., 1,2,3,4, Treasurer, 4;
Hi-Y, 4; National Honor Society.

TOM WEINRICH

Basketball, 1; Boys Glee Club, 1; Hi-Y, 2,3,4;
Tennis, 2; Track, 1.

FRED WHEATON

Band, 1,2; Basketball, 1,2; Football, 1,2,3,4;
F.F.A., 1,2,3,4, Secretary, 4; Hi-Y, 4; Inksling-
ers 2,3,4; National Honor Society, 3,4, Presi-
dent, 4; Student Council, 3; Varsity Club, 2,
3,4, Secretary, 3,4; Dance Orchestra, 2.

JEAN WIMER

F.G.A., 1, Parliamentarian; Girls Glee Club,
1,2.

ROBERT WOODRUFF

Basketball, 1,2,3,4; Choir, 2,4; Class Officer,
President, 1,2; Football, 1,2,3,4, Co-Captain, 3;
Hi-Y, 2,3,4; National Honor Society, 3,4; Stu-
dent Council, 1,2; Track, 1,2,3,4; Varsity Club,
1,2,3,4, President, 3; Octette, 2.

TONI YENNOR

Girls Glee Club, 4.

JACK ZAIGER

Band, 1,2,3,4; Basketball, 1; Football, 3; Hi-Y,
2,3,4; Ski Team, 2; Dance Orchestra, 1,2,3,4.

J-hop

1959



Photo, Courtesy Petoskey News Review



sayonara



JUNIOR play

1960



“cheaper by the dozen”



JUNIOR

play

1959

“nuts in may”



SENIOR play 1960



FIRST ROW: Eugene Brown, John Rigg, Tom Rowe, Duane Lawson, Del Skinner, Rick Brown, Ted AuClaire. SECOND ROW: Miss Olson, Advisor; Cindy Lovelace, Judy Spears, Janice Moser, Eileen Bifoss, Betty Lou Allen, Mary Switzer, Mary, Clements, Ruth Allen, Sukey Jones.



“dino”





u n d e r G r a d s



Tom Gough, Betty Reid, Dan Smith

Time is the maker of traditions and customs. Through it, the Juniors have had handed down to them the traditions of supervising and planning the J-Hop, the Junior-Senior Banquet, and the Junior play. A Junior is one of the most busy, harried people around, but he maintains his equilibrium by making wide use of his well-developed sense of humor.

CLASS OFFICERS

President Dan Smith
 Vice President Tom Gough
 Secretary-Treasurer Betty Reid



R. Ash



C. Barnum



B. Becker



K. Behling



D. Buckstiegel



B. Burns



K. Cadwallader



J. Carls



D. Cilke



D. Clancy



J. Clark



F. Cone



W. Conley



A. Conrad



S. Cooper



S. Croff



R. Dell



A. Dennis



B. Deschermeier



M. Dominic



T. Duncan



J. Duree



M. Duree



F. Ellis



L. Everts



J. Festerling



D. Fraley



B. Garthe



L. Garver



K. George



L. Gibbard



A. Gillespie



J. Glaze



T. Gough



K. Granger



H. Hamill



S. Hanna



W. Haskell



J. Hatch



D. Hewitt



D. Hickman



K. Hickman



G. Hood



D. Huczek



R. Hudson



S. Hughey



R. Johnson



D. Jones



O. Kalbfleisch



J. Keck



J. Kiffer



J. Kilmer



D. Kughman



G. Laughlin



C. Lewis



J. Loyer



K. Luebke



J. Luesing



R. Malloy



H. Manthei



J. Martin



J. Matz



L. Maxfield



T. McCutcheon



B. McKinnon



L. McMaster



F. McMillan



L. McMillan



J. Meyer



C. Meyers



B. Miller



W. Miller



J. Morris



J. Neilson



F. Notestine



M. O'Brien



C. Oehrli



M. Parsons



T. Reber



B. Reid



V. Renwick



G. Rosevear



D. Rosselit



K. Schaller



M. Schulz



B. Shorter



J. Sikarskie



J. Slocum



T. Smart



B. Smith



D. Smith



M. Smith



P. Smith



S. Smith



R. Sommer



L. St. Amand



L. Stevens



H. Stolt



B. Streeter



N. Stringer



M. Strong



J. Sweany



R. Taylor



J. Titus



K. Warren



M. Washburne



J. Wilhelm



M. Woodruff



D. Wormell



T. Wright



E. Wurst



C. Yaich



sophomores



Being a sophomore has always offered a new prestige. With the assurance of one year behind them, they are more confident in making new decisions. They also find that their ability to create fun out of anything, anywhere has shown a definite increase.

CLASS OFFICERS

Tom Sutherland President
 Ed White Vice-President
 Dave McCarthy Secretary-Treasurer



K. Aho



E. Allen



E. Angevine



K. Bacon



L. Bailey



L. Baker



M. Baker



S. Baker



G. Bare



A. Bayha



E. Bellmer



P. Bellmer



J. Blanchard



C. Boland



T. Boyer



D. Brasure



J. Brecheisen



A. Bricker



C. Broman



C. Brown



E. Burnett



P. Burr



R. Burrows



I. Call



J. Canell



D. Carpenter



F. Christoff



D. Cilke



W. Cook



P. Croff



D. Crosser



D. Davis



D. Dell



B. Dillin



C. Dillin



M. Dittmar



J. Dudek



J. Duncan



D. Ecker



J. Ellenberger



L. Engler



N. Eppler



S. Everts



C. French



L. Furgeson



M. Gardner



P. Garrett



S. Garthe



J. Garver



T. Glazier



B. Grams



A. Hall



R. Hamill



J. Hand



J. Hand



T. Hankey



J. Hansen



J. Hickman



J. Hill



M. Hooker



T. Hooker



W. Horniman



S. Houts



J. Howard



B. Hughey



D. Jeffries



D. Jepson



D. Johnson



S. Kalbfleisch



V. Kaufman



J. Kauzlarich



E. Keck



M. Kilborn



E. Kiogima



R. Kiogima



A. Knowles



R. Lashmit



J. LeGrand



I. Lilga



K. Luebke



V. Luesing



M. Mayes



D. McCarthy



C. McCartney



M. McClellan



F. McGeath



G. McPhee



P. Medley



P. Moon



G. Morford



J. Moser



M. Mulholland



J. Ness



W. Newberg



L. Padgett



D. Paulsen



J. Peck



J. Quade



P. Rinock



E. Risk



C. Rowe



D. Sarasin



R. Shafer



L. Sheldon



P. Sikarskie



D. Smith



H. Smith



B. Spurgeon



J. Stanley



B. Starmer



J. Still



J. Stow



T. Sutherland



R. Tillotson



D. Treloar



T. Walker



T. Walker



S. Ward



L. Wellcome



J. Wells



E. White



B. Wilson



D. Witte



E. Yahr

freshmen

Throughout the 75 years of school life, being a freshman has always constituted the same wonderment and anxieties. New and strange decisions have had to be faced while making adjustments to high school living. Nevertheless, each year the "freshies" are as lively and fun-loving as ever.



CLASS OFFICERS

Tom Webster President
 Jerry Hand Vice-President
 Katie McCune Secretary-Treasurer



M. Allen



H. Angevine



S. Bayha



L. Behling



B. Bellmer



W. Bodzick



A. Boyer



D. Brier



M. Broman



S. Buckmaster



W. Carls



D. Caron



R. Chase



J. Christopherson



J. Clark



M. Crago



P. Croff



W. Croff



D. Dell



J. Dillin



J. Dittmar



D. Dombroski



G. Doyle



E. Drost



M. DuPois



A. Edson



T. Ellis



C. Everts



P. Fleshman



R. Furgeson



R. Glazier



S. Grams



J. Granger



B. Gratsch



J. Gustafson



O. Hammond



J. Hand



T. Hayner



C. Heller



K. Herr



L. Hewitt



H. Hibbler



I. Hickman



K. Howard



E. Hudson



J. Hull



R. Johnston



R. Kalbfleisch



S. Kelly



L. Kilmer



T. Kilpatrick



S. Kirk



D. Kitchin



J. Kolinski



R. Ladd



K. Lambertson



G. Lawrie



J. Leroue



P. Manthei



E. McCune



K. McCune



J. McKnight



D. McMillan



J. McWatters



B. Meadows



J. Morell



C. Morris



K. Morris



D. Mundhenk



J. Ness



B. Norris



E. Page



G. Peck



R. Perry



A. Pitman



D. Pollard



D. Pollard



M. Pray



R. Renwick



M. Reusch



T. Rigg



B. Rinock



L. Sarna



G. Schoder



R. Schweigert



T. Schweigert



J. Shomin



J. Smith



R. Spencley



D. Stallings



R. Stanley



C. Stevens



C. Stewart



G. Swadling



L. Sweany



D. Taylor



C. Tousain



W. Towns



T. Webster



R. Wells



J. Williams



K. Wilson



R. Witte



M. Wood



the sadie



Bet they captured some good ones



Aren't they lovable?



Troubles



Ricardito



Where did THEY come from?

EIGHTH GRADE



FIRST ROW: D. Adolphs, J. Allen, G. Baker, M. Baker, R. Barnum, S. Behling, B. Blum, M. Boening, B. Born, M. Bowman, S. Boyd;
 SECOND ROW: D. Bricker, J. Budzynski, P. Burrows, B. Chapin, P. Cook, J. Davis, F. Denard, S. Dennis, K. Dielman, E. Dietze, D. Dillin;
 THIRD ROW: J. Doherty, M. Drake, A. Dudek, J. Duvernay, S. Eddy, B. Ellenberger, E. Elliott, D. Ellis, E. Essig, K. Etcher, J. Faunce;
 FOURTH ROW: A. Fineout, B. Ford, M. Ford, J. Gebben, S. Hibbard, G. Guillaume, B. Hankins, M. Hanna, J. Hibbler, M. Hickman, D. Hills;
 FIFTH ROW: H. Hinkley, C. Hitchings, C. Hoover, B. Horniman, J. Howard, D. Hunt, L. Jensen, L. Jewell, S. Jewitt, B. Johnson, C. Johnson;
 SIXTH ROW: K. Johnson, S. Johnson, G. Johnston, H. Keck, J. Keller, T. Kiebel, R. Kilmer, D. Kinert, D. Kiogima, J. Kiogima, J. Koehler;
 SEVENTH ROW: M. Krauser, J. Krieg, E. Lawson, J. Leismer, C. Lovelace, M. Luebke, J. Manning, D. Mathews, J. Matz, J. Matz, M. Mayes;
 EIGHTH ROW: J. Mc Clellan, A. Mc Waters, A. Merrill, D. Mummert, R. Norris, T. Parsons, C. Paxton, G. Peck, J. Peck, R. Phillips, J. Pletzer;
 NINTH ROW: D. Ports, B. Reber, G. Robinson, M. Rosselit, J. Rowe, C. Satmary, G. Sheldon, W. Sifford, J. Smith, J. Smith, M. Smith.

Eighth Grade, Continued



FIRST ROW: J. Synder, W. Stalling, L. Stanley, L. Starmer, M. Stevens, E. Switzer, M. Titus, R. Tousain, M. Ulrich, E. Veurink;
 SECOND ROW: R. Wanamaker, T. Watts, B. Wilde, J. Wilhelm, J. Woodruff, T. Wormell, A. Wright, D. Wurst.

Class Officers

President Janet Doherty
 Vice-President John Woodruff
 Secretary-Treasurer Jerri Smith

seventh grade



FIRST ROW: B. Adams, J. Allen, D. Ash, M. Bailey, M. Ballard, D. Bates, B. Becker, G. Becker, C. Bellmer, B. Bennett, L. Bischoff;
 SECOND ROW: C. Blanchard, P. Brecheisen, L. Bricker, R. Briggs, D. Broman, C. Buettner, B. Burtch, J. Carey, M. Champion, D. Christopherson, R. Clancy; THIRD ROW: P. Coeling, J. Collins, J. Concannon, J. Cone, G. Conway, R. Conway, K. Crawford, V. Crick, G. Dennis, D. Dodge, M. Dudek, D. Duncan; FOURTH ROW: D. Dunshee, E. Eastwood, B. Eaton, J. Ellenberger, K. Ernst, R. Fochtman, S. Gabrielson, J. Garringer, B. Glazier, B. Grams, R. Gretsch, C. Hammond.

Seventh Grade, Continued



Class Officers

President Mike Winnell
 Vice-President Patti Phillips
 Secretary-Treasurer Sally Knight

FIRST ROW: G. Hannon, D. Haskell, T. Haynor, J. Hibbler, T. Holck, B. Hollister, S. Huddle, D. Hughey, J. Ingalls, P. Ingalls, E. Jay;
 SECOND ROW: J. Johnston, C. Kiffer, C. Kitchin, S. Kinert, A. Kirk, S. Knight, G. Kuntz, J. Kurburski, D. Lawrason, K. Leismer, J. Lewis;
 THIRD ROW: J. Lilga, P. Lindley, F. Little, J. Lopez, D. Malone, J. Manthei, J. Martinchek, C. Mayes, M. McAlvey, D. Mc Clellan, L. Mc Dowell;
 FOURTH ROW: C. Mc Garey, J. Mc Master, V. Mc Phee, J. Mc Vay, C. Moore, R. Moore, W. Moore, L. Moran, D. Morford, J. Moser, J. Moyer;
 FIFTH ROW: D. Olsen, P. Ostrander, T. Otto, L. Padgett, V. Page, G. Pangborn, M. Petoskey, W. Pettenger, P. Phillips, R. Pitman;
 SIXTH ROW: L. Potts, C. Pray, M. Price, D. Radle, R. Rasmussen, J. Rebtoy, R. Rebtoy, J. Reid, R. Rehkopf, F. Rice, E. Riehl;
 SEVENTH ROW: C. Rosenow, B. Schierschmidt, J. Schoder, B. Schweigert, M. Seamon, P. Seldon, C. Shomin, L. Sigafus, C. Smith, W. Sommerville, M. Southwood;
 EIGHTH ROW: P. Spencley, R. St. Amand, C. Stanley, G. Stanley, R. Stanley, T. Sterzik, D. Stow, S. Swadling, E. Tews, M. Thompson, R. Towns;
 NINTH ROW: C. Trautman, G. Vanhorn, L. White,

snapshots



What a Motley Crew



Senior Sardines



Them There Eyes



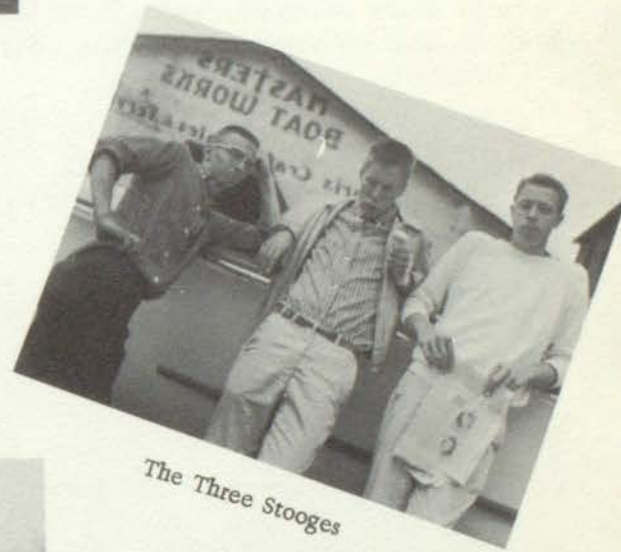
Football Is Funny



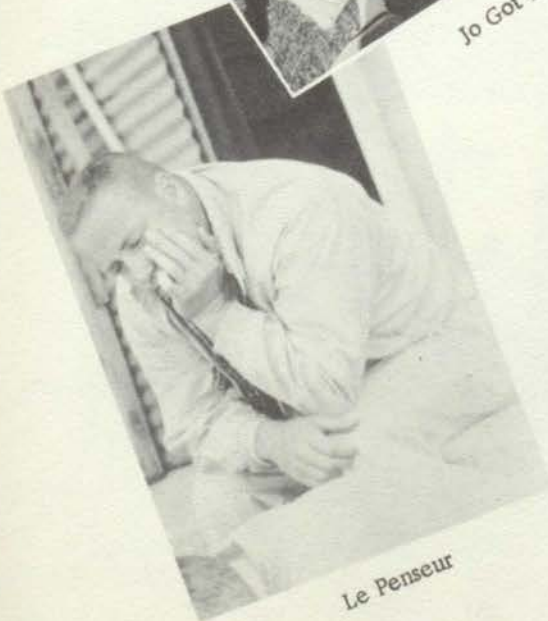
Souseketeers



Jo Got Killed



The Three Stooges



Le Penseur



Injured?
45



Come With Me to the Casbah. . .

1959 homecoming



The Winner -- 7th Grade

Persistent rain did not prevent the 1959 Homecoming festivities from being gay and exciting. Although a snake dance could not be held Thursday because of the slippery streets, loyal fans burned the Ludington dummy in a crackling fire. On Friday the rain let up just enough to allow a parade of the clever floats through town. After a successful—though somewhat muddy—football game, Queen Mary Switzer received her crown from Barbara Wilson in the gym while members of her court Mary Ellen McGeath, Rena Martinchek, Shirley Kent, and Marcia Veurink looked on.



"It's In Our Reach"



Queen Mary and Court



The Coronation

a

c

t

i

v

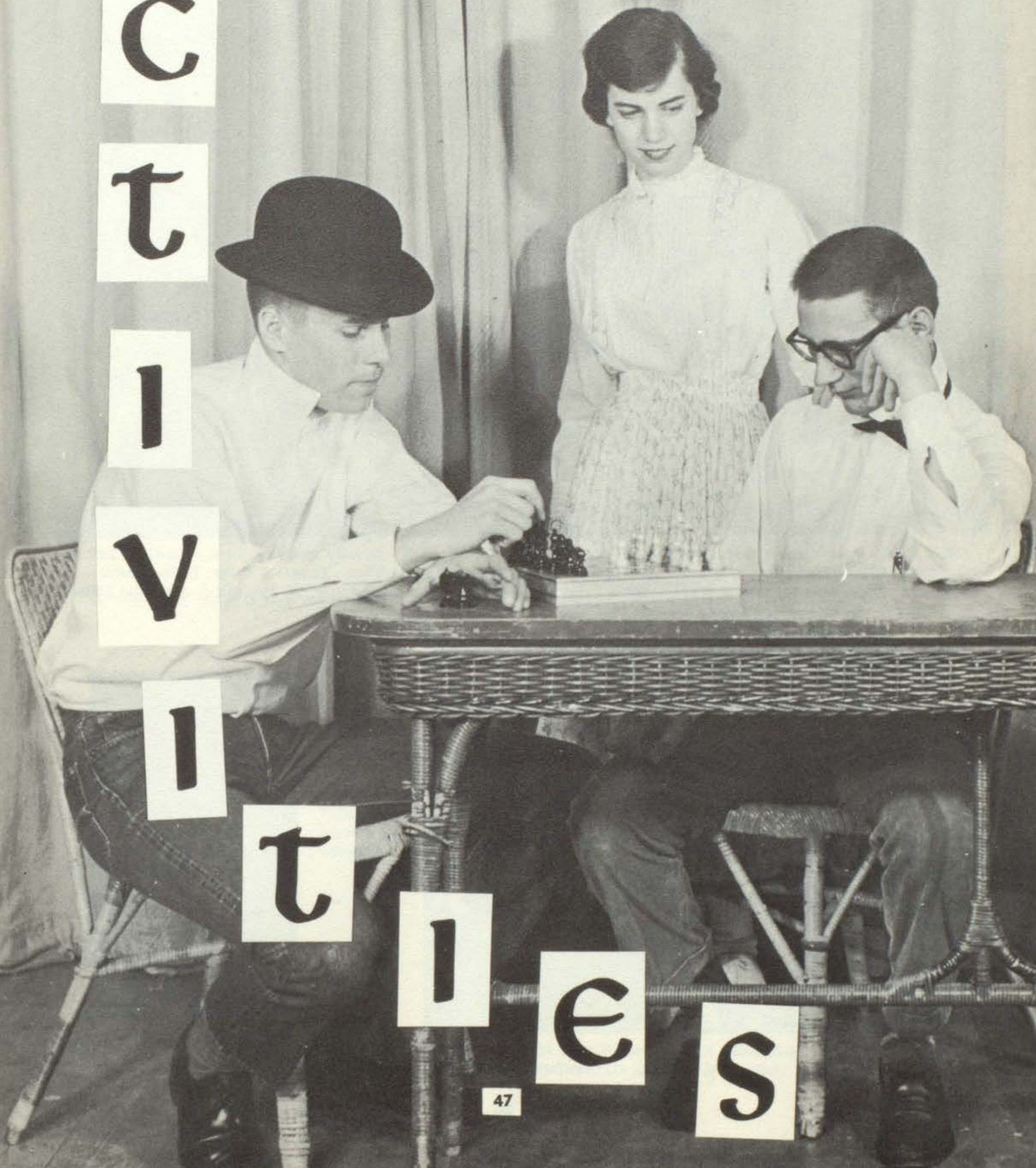
i

t

i

e

s



YEARBOOK staff



FIRST ROW: C. Lovelace - Photographer, L. Orient - Senior Editor, S. Kent - Faculty Editor, S. Jones - Co-Copy Editor, C. Smith - Undergrad Editor, E. Bifoss - Paste-up Editor; MIDDLE: P. McCutcheon - Associate Editor, D. Mundhenk - Editor-in-Chief; THIRD ROW: R. Brown - Sports Editor, M. Clements - Co-Copy Editor, M. McGeath - Activities Editor, M. Switzer - Art Editor, T. Paxton - Business Manager.



FIRST ROW: N. Stevens, E. Schroeder, K. Klumpp; SECOND ROW: A. Haskell, B. Allen, S. de la Vergne, L. McCartney, R. Allen, C. Crawford, D. Miller.



Mrs. Howard, Advisor

national honor society



Photo, Courtesy Petoskey News Review

FIRST ROW: M. Blanchard, E. Brown, M. Clements, B. Haines, J. Hastings, M. McGeath, B. Malone, R. Martinchek, B. Stanley, M. Veurink, J. Wanamaker; SECOND ROW: R. Woodruff, N. Halstead, A. Stolt, F. Wheaton, D. Mundhenk, Mrs. Inglis, C. Smith, M. Switzer.

Purpose: To maintain and establish high standards of scholarship, leadership, character, and service.

President Fred Wheaton
Vice-President Carolyn Smith
Secretary-Treasurer Nancy Halstead
Advisor Mrs. Inglis

student council



FIRST ROW: N. Stevens, J. Meyer, P. McCutcheon, B. McKinnon, B. Burns, R. Allen, D. Buckstiegel, E. Brown; SECOND ROW: T. Sutherland, R. Johnson, T. Schweigert, C. Stevens, S. Buckmaster, E. Yahr, S. Baker, D. Bates; THIRD ROW: C. Kiffer, C. Blanchard, J. Reid, M. Baker, L. Starmer, S. Johnson, D. Hills, D. Matthews, A. Kirk, M. McAlvey; MISSING: Mr. Catton, Advisor; John Still.

The purpose of this club is to promote a harmonious relationship between faculty and students. Through it, student's opinions, interests, and desires may be made known to the faculty.

President Norm Stevens
 Vice-President Ruth Allen
 Secretary-Treasurer Pinky McCutcheon
 Advisor Mr. Catton

hi-light staff



FIRST ROW: C. Rowe, C. Oehrli, B. McKinnon, K. Luebke (Editor-in-Chief), B. Deschermeier; SECOND ROW: Fay Notestine, Mrs. Vratnina, D. Hewitt, W. Haskell.



REPORTERS: FIRST ROW: D. Johnson, J. Ness, I. Lilga, E. Yahr, E. Allen, S. de la Vergne, P. McCutcheon, C. Crawford, P. Moon, M. Switzer; SECOND ROW: M. Kilborn, C. McCartney, T. Paxton, N. Stevens, B. Malone, L. Everts, M. Mayes, A. Gillespie.

TRI-hi-y



FIRST ROW: M. McGeath, M. Switzer, P. McCutcheon, D. Mundhenk, D. Miller, D. Guillaume, N. Halstead, R. Allen;
 SECOND ROW: E. Bifoss, J. Spears, L. Sheldon, J. Hansen, C. Brown, A. Bayha, C. Smith, M. Blanchard, C. Lovelace;
 THIRD ROW: S. de la Vergne, D. Johnson, J. Wells, P. Sikarskie, Mrs. Sikarskie; FOURTH ROW: L. McCartney, S. Kent.



FIRST ROW: G. Rosevear, J. Matz, K. Aho, C. McCartney, P. Moon, J. Blanchard, M. Hooker; SECOND ROW: B. Reid, M. Smith, M. Woodruff, L. Gibbard, S. Croff, B. Burns, J. Kiffer, T. Reber; THIRD ROW: K. Luebke, L. McMaster, J. Sikarskie, S. Smith, A. Gillespie, D. Clancy, K. George, S. Hanna.

OFFICERS:

President	Marge Blanchard
Vice-President	Jean Sikarskie
Secretary	Lynn McCartney
Treasurer	Terry Reber
Chaplain	Donna Clancy
Historian	Jean Matz
Advisor	Mrs. Sikarskie

Purpose: To promote, maintain, and extend throughout the home, school, and community, high standards of Christian character.

hi-y



FIRST ROW: J. Peck, N. Stevens, L. Laughlin, R. Chapin, R. Brown, K. Klumpp, R. Perry, R. Lewis. SECOND ROW: J. Zaiger, R. Holck, T. Paxton, B. Haines, T. Wienrick, B. Woodruff, B. Malone, J. Wanamaker, F. Wheaton.



FIRST ROW: B. Miller, T. McCutcheon, B. Smith, V. Renwick, D. Hewitt, B. Shorter, D. Buckstiegel; SECOND ROW: Mr. Quade, B. Starmer, T. Gough, M. Dominic, K. Granger, G. Hood, Herb Hamill, G. Laughlin, M. Parsons.

Advisor Mr. Quade

Purpose: To create, maintain, and extend throughout the home, school, and community, high standards of Christian character.

OFFICERS:

President John Rigg
 Vice-President Norm Stevens
 Secretary Gordon Laughlin
 Treasurer Larry Laughlin
 Chaplain Bob Woodruff

Dramatics



OFFICERS:

President, Bunny Garthe
 Vice-President, Linda Gibbard
 Secretary-Treasurer, Ruth Allen

Purpose: To create an interest in the
 Dramatic Arts among the student body.

FIRST ROW: J. Moser, K. Cadwallader, J. Matz, A. Haskell, R. Allen, S. Jones, C. Rowe; SECOND ROW: F. Notestine, L. Everts, L. Gibbard, S. Hanna, A. Gillespie, J. Duree, J. Canell, K. Schaller; THIRD ROW: W. Haskell, E. Brown, B. Haines, R. Hull, S. Buckmaster, D. Lawson, W. Coors.

thespians



Miss Olson, Advisor

OFFICERS:

President, Lynn McCartney
 Vice-President Eugene Brown
 Secretary-Treasurer Ruth Allen
 Advisor Miss Olson

Purpose: To give recognition to those
 who have done outstanding work.



FIRST ROW: S. Jones, B. Garthe, L. Gibbard, K. Schaller, A. Haskell, L. McCartney, J. Matz, E. Bifoss; SECOND ROW: F. Notestine, B. Allen, R. Chapin, G. Hood, R. Allen, D. Miller; THIRD ROW: B. Haines, W. Haskell, E. Brown, T. Paxton, T. AuClaire, D. Annis.

INKSLINGERS

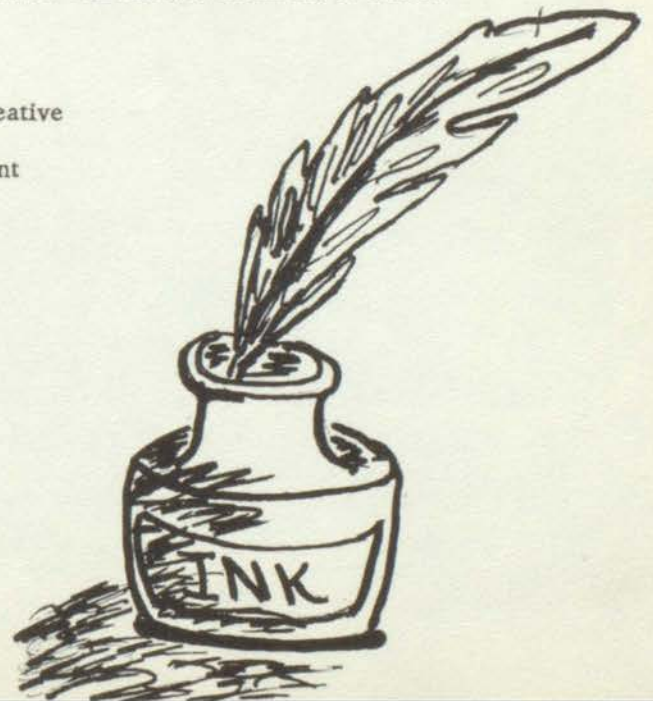


FIRST ROW: C. Yaich, B. Smith, J. Titus, Mrs. Thompson, N. Stevens, F. Wheaton, B. Burns; SECOND ROW: A. Gillespie, J. Blanchard, M. Kilborn, L. Starmer, M. Drake, K. McCune, C. Stevens, M. Pray, C. Everts, K. Cadwallader; THIRD ROW: M. Clements, S. Jones, D. Mundhenk, P. McCutcheon, C. Tillotson, B. Anderson, J. Kiffer.

Purpose: To encourage in Petoskey High School the use of creative ability, to increase a realization of our responsibilities in developing all creative abilities, and to foster the development of leadership in the furthering of all creative enterprises.

OFFICERS:

President Melinda Kilborn
Vice-President Jim Titus
Secretary-Treasurer Kay Cadwallader
Program Chairman Karen Schaller
Advisor Mrs. Thompson



future farmers of america



BACK ROW: Mr. Emshwiller, J. Howard, T. Glazier, R. Burrows, D. Daniels, J. Hand; SECOND ROW: L. Furgeson, M. Baker, J. LeGrand, J. Swadling, R. Hannon, D. Bedrick; FRONT ROW: J. Hand, T. Walker, T. Walker, L. Daniels, J. Stow, J. Hickman.



BACK ROW: B. Bodzick, G. Schoder, R. Spencley, C. Stewart, J. Doe, L. Kilmer, T. Kilpatrick, G. Swadling; FRONT ROW: G. Doyle, R. Stanley, W. Crouch, P. Croff, R. Furgeson, J. Ness, R. Kalbfleisch.



BACK ROW: B. Becker, J. Leusing, D. Dunshee, J. Lybarker, P. Jackimovicz, C. Kiebel, G. Fettig, F. Glazier, A. Cone;
 SECOND ROW: J. Wanamaker, O. Kalbfleisch, K. Fettig, L. Baird, D. Hickman, M. Bixby, J. Merrill; FRONT ROW: M.
 Veurink, A. Stolt, J. Hiller, F. Wheaton.

OFFICERS:

- President Marvin Veurink
- Vice-President Grant Fettig
- Secretary Fred Wheaton
- Treasurer John Wanamaker
- Reporter Joe Flynn
- Parliamentarian Jack Hiller
- Sentinel Paul Jackimovicz

Purpose: To practice brotherhood, honor, rural opportunities,
 and develop those qualities of leadership which future farm-
 ers should possess.



OFFICERS: P. Jackinowicz, J. Wanamaker, M. Veurink, G. Fettig,
 J. Hiller, F. Wheaton.

SUB DeBS



FIRST ROW: L. Hewitt, S. Kelly, R. Renwick, B. McKinnon, C. Brown, J. Sikarskie, J. Wells, S. Buckmaster; SECOND ROW: B. Garthe, M. Smith, B. Burns, B. Reid, M. Woodruff, P. Sikarskie, A. Bayha, K. Aho, P. Moon; THIRD ROW: Mrs. Fowler, C. Lovelace, M. Veurink, S. Kent, P. McCutcheon, M. McGeath, L. McCartney, Mrs. Beckley; MISSING: C. Bates, M. Dittmar.

OFFICERS:

President..... Jean Sikarskie
 Vice-President..... Barrie McKinnon
 Secretary-Treasurer..... Jane Wells
 Advisors..... Mrs. Beckley and
 Mrs. Fowler

The purpose of this club is to learn

how to become better citizens of

tomorrow by socializing with people.

future teachers of america

OFFICERS:

President..... John Meyer
 Vice-President..... Mary Clements
 Secretary..... Mary Ellen McGeath
 Treasurer..... Paula Sikarskie
 Historian..... Arlene Bayha

The purpose of this club is to interest more students in the field of teaching and to give them an idea of what teaching covers by classroom visitation and by helping the teachers.



FIRST ROW: M. McGeath, P. McCutcheon, M. Clements, J. Meyer, P. Sikarskie, A. Bayha, K. Aho, A. Haskell; SECOND ROW: Mrs. Titus, P. Moon, C. McCartney, J. Wells, J. Blanchard, J. Hansen, E. Burnett, P. Croff; THIRD ROW: T. Reber, M. Hooker, B. Malone, K. Cadwallader, R. Martinchek, L. Garver.

VARSITY CLUB



FIRST ROW: K. Klumpp, E. Schroeder, B. Morgan, B. Hastings, D. Annis, E. Colwell, R. Brown, J. Hiller; SECOND ROW: J. Ranney, R. Chapin, R. Perry, R. Lewis, T. Borisch, J. Curtis, B. Malone, F. Wheaton, A. Stolt, B. Woodruff; MISSING: J. Rigg, M. Rosenow.



FIRST ROW: Coach Van Wie, W. Johnson, J. Titus, B. Smith, T. Smart, G. Bare, Coach Fowler; SECOND ROW: F. Mc-Millan, W. Miller, M. Parsons, Coach White, E. Still, T. Sutherland.

OFFICERS:

President	Bruce Morgan
Vice-President	John Rigg
Secretary	Fred Wheaton
Treasurer	Jim Ranney
Sergeants-at-Arms	DeWayne Annis and Bob Woodruff

The purpose of this club is to promote good sportsmanship, clean living, better school spirit, and a good scholastic record among athletes.

GIRL'S ATHLETIC ASSOCIATION



FIRST ROW: E. Hankins, T. Duncan, B. Stowe, G. Cumberland; SECOND ROW: L. St. Amand, A. Gillespie, J. Matz, E. Biffos, J. Spears, S. Jones; THIRD ROW: Miss Richwine, P. Smith, J. Duree, C. Barnum, K. Warren, R. Sommers, R. Malone, J. Wilhelm, L. Garver.

Purpose: To promote good sportsmanship and good mental and physical health among it's members.

OFFICERS:

President Gwen Cumberland
 Vice-President Ann Gillespie
 Secretary Jean Matz
 Treasurer Sukey Jones
 Student Manager Roberta Malloy
 Advisor Miss Richwine



FIRST ROW: E. Kiogima, D. Mundhenk, K. Herr, C. Heller, M. McClellan; SECOND ROW: K. Wilson, M. Reusch, M. Kilborn, J. Dudek, L. Sweany, B. Spurgeon; THIRD ROW: P. Croff, J. Canell, A. Parker, S. Grams, P. Medley, D. Taylor, D. Paulsen, J. Blanchard, M. Mayes.



pep club



FIRST ROW: M. Woodruff, M. Smith, S. Smith, T. Duncan, S. Croff, J. Wilhelm, J. Sweany, J. Matz; SECOND ROW: B. Reid, D. Fraley, L. St. Amand, P. Smith, M. Leshner, G. Rosevear, L. Gibbard, L. McMaster, J. Sikarskie; THIRD ROW: B. Burns, J. Kiffer, K. Luebke, S. Kent, Mrs. Price, G. Cumberland, C. Lovelace, N. Halstead, M. Switzer, L. McCartney.



OFFICERS:

President	Mary Switzer
Vice-President	Marcia Woodruff
Secretary	Dee Guillaume
Treasurer	Linda Gibbard
Advisor	Mrs. Price

Purpose: To promote school spirit and good sportsmanship among the student body.

FIRST ROW: L. Sheldon, P. Sikarskie, C. Heller, S. Bayha, M. Crago, M. Reusch, S. Kelly, J. Christopherson; SECOND ROW: M. Mayes, J. Duncan, D. Johnson, P. Moon, C. Rowe, C. McCartney, A. Bayha, J. Wells, C. French.



A 1958 blast



Cindy and Shirley



Tea (?) party



Pedro and Goo Goo



The Sophomore President



Two former devils



Crazy girls



La Belle L's



An intellectual



Josy and Gwen



m u s i c

CHOIR



FIRST ROW: L. Gibbard, C. Rowe, K. Schaller, J. Blanchard, M. McClellan, C. Cetas, S. de la Vergne; SECOND ROW: J. Wilhelm, F. Notestine, E. Yahr, B. Garthe, L. McMaster, G. Rosevear, J. Matz, R. Malloy; THIRD ROW: D. Skinner, V. Kauffman, D. Lawson, B. Starmer, D. Whitte, D. Hewitt, B. Woodruff; FOURTH ROW: D. Cilke, R. Johnson, W. Haskell, H. Stolt, B. Street-er, D. Smith, J. Meyer, E. Colwell.

sextette



Left to Right: E. Allen, K. Schaller, L. Gibbard, M. Woodruff, C. Crawford, R. Sommers, H. Burtch.



FIRST ROW: N. Halstead, M. Woodruff, M. Clements, E. Bellmer, R. Sommers, C. Barnum, J. Glaze, K. Oehrli, R. Ash;
 SECOND ROW: M. Smith, C. Brown, C. Crawford, T. Reber, D. Clancy, E. Allen, M. McGeath, E. Burnett, D. Wormell;
 THIRD ROW: R. Tillotson, J. Brecheisen, M. Dominic, S. Garthe, J. Peck, D. Treloar, C. Tillotson, K. Caldallader;
 FOURTH ROW: J. Hiller, D. Smith, L. Engler, R. Horning, J. Garver.

octette



FIRST ROW: D. Pollard, D. Treloar, T. Webster, D. Pollard; SECOND ROW: H. Stolt, R. Johnson, S. Garthe; THIRD ROW: A. Cone, J. Meyer, D. Smith.



Mr. Moyer, Director
 Helen Burtch, Accompanist

ninth GRADE GLEE CLUB



FIRST ROW: K. Herr, M. Broman, K. Morris, D. Dillin, C. Stevens, M. Pray, K. McCune, R. Renwick, K. Lambertson, C. Everts;
 SECOND ROW: R. Witte, J. Clark, I. Hickman, H. Angeveine, G. Lawrie, M. Reusch, L. Hewitt, B. Meadows, J. Kolinske, S. Bayha; THIRD ROW: M. Allen, J. Webster, D. Pollard, J. Schweigert, J. Smith, R. McKnight, J. Rigg, E. McCune, D. Pollard, Mr. Moyer.

GIRLS' GLEE CLUB



FIRST ROW: J. Canell, J. Moser, C. Oehrli, C. Crawford, A. Bayha, C. French, R. Sommer, W. Glaze, C. Barnum, D. Bodzick;
 SECOND ROW: K. Aho, B. Grams, J. Gokee, K. Bacon, W. Newberg, S. Kalbfleisch, N. Eppler, M. Strong, T. Yennor, E. Allen, L. Deilman; THIRD ROW: R. Malloy, F. Notestine, P. Medley, B. Spurgeon, K. Warren, P. Moon, D. Brasure, L. Garver, M. Mayes, J. Wells, Mr. Moyer.

INTERMEDIATE BAND



FIRST ROW: J. Rowe, T. Parsons, B. Briggs, L. Jensen, E. Essig, J. Pletzer, M. Luebke, M. Titus, J. Faunce, C. Satmary, M. Drake, B. Reber. SECOND ROW: J. Keller, T. Watts, J. McClellan, B. Wilde, M. Hickman, L. Starmer, C. Hitchings, R. Barnum, G. Guillaume, B. Blum, J. Matz. THIRD ROW: S. Eddy, A. Fineout, C. Lovelace, J. Synder, W. Sifford, J. Manning, G. Peck, C. Paxton, R. Phillips, Mr. Smith, J. Krieg, G. Sheldon.

BEGINNERS BAND



FIRST ROW: H. Hinkley, D. Dillin, S. Huddle, C. Rosenow, C. McGarey, D. McClellan, P. Phillips, M. Dudek, C. Blanchard, S. Gabrielson, P. Lindley; SECOND ROW: C. Schweigert, N. Gretsch, R. Tousain, T. Otto, R. Towns, D. Duncan, V. McPhee, C. Trautman, P. Coeling, J. Lilga, C. Kiffer, J. Moyer, J. McMaster; THIRD ROW: L. Potts, R. Rehkopf, G. Dennis, M. Ulrich, P. Brecheisen, E. Jay, B. Becker, M. Ballard, W. Bishoff, R. Malone, J. Ingalls, G. Becker; FOURTH ROW: M. Carey, L. White, K. Ernst, M. Champion, D. Potts, D. Laurason, P. Ostrander, R. Pitman, D. Christopherson, Mr. Smith, C. Buettner, B. Burtch, B. Grams.

CONCERT BAND



FIRST ROW: L. Sheldon, T. Hooker, G. Morford, K. Aho, E. Risk, L. Stevens, H. Smith, S. Croff, M. Smith, G. Laughlin, L. Gibbard; SECOND ROW: I. Lilga, D. Carpenter, S. Garthe, F. McGeath, D. Treloar, D. Guillaume, S. Jones, C. Hock, D. Miller, A. Gillespie, J. Titus; THIRD ROW: Mr. Smith, K. Schaller, M. Hooker, P. Bellmer, P. Moon, C. McCartney, V. Renwick, G. Bare, J. Meyer, J. LaTocha, S. Barnum.



FIRST ROW: S. Hanna, C. Smith, D. Mundhenk, C. Lovelace, R. Allen, J. Sikarskie, M. Woodruff, T. Reber, B. Garthe, J. Peck, J. Wells; SECOND ROW: M. Parsons, D. Buckstiegel, T. Walker, J. Quade, J. Zaiger, H. Burtch, J. Sweany, B. Hankey, J. Ranney, L. Garver, J. Matz; THIRD ROW: D. Champion, R. Tillotson, E. White, T. Walker, F. Cone, W. Newberg, D. Cilke, T. Smart, G. Hood, E. Colwell, B. Morgan.

high school band



FIRST ROW: C. Dillin, D. Mundhenk, L. Hewitt, R. Renwick, L. Sweany, J. Dittmar; SECOND ROW: M. Allen, D. Dombroski, J. Parker, I. Hickman, R. Putman, R. Lashmit, M. Gardner, R. Schweigert, Mr. Smith; THIRD ROW: S. Grams, W. Croff, L. Engler, R. Chase, G. Peck, A. Edson, J. Garver, W. Carls, R. Perry, R. McKnight.

dance bands



L. Gibbard, J. Matz, C. Smith
T. Rowe, S. Jones, J. LaTocha, G. Hood
R. Tillotson, M. Smith



G. Laughlin, Mr. Smith, S. Hanna
M. Parsons, A. Gillespie, D. Champion, W. Newberg, V. Renwick



Funny, huh?



Elvis Paxton



Odd people



Smithly



Little toughs

Look Ma! No cavities



The awful three



The Veurink kids



Strumedy-Strum



They know what the deal is



A birthday party



Jim Ranney



Bang!



A dip at the Grand



All right you guys!



Our Homecoming Queen!



Baby Buzzy



Clem and Mem



Rigg

John



Rigg

Gypsy Rose John



Morgan when young



Rooti-toot-toot

S P O R T S



VARSITY CHEERLEADERS



Mary Switzer, Nancy Halstead, Glenda Rosevear, Thora Duncan

J. V. CHEERLEADERS



Paula Sikarskie, Carolyn Heller, Meri Reusch, Arlene Bayha

VARSITY FOOTBALL

"THE TEAM THAT WOULDN'T QUIT"

Manistee	40	Petoskey	7
Manistique	54	Petoskey	0
Newberry	27	Petoskey	6
Cheboygan	6	Petoskey	7
Cadillac	13	Petoskey	14
Ludington	0	Petoskey	6
Traverse City	39	Petoskey	7
Rogers City	7	Petoskey	7

After losing to top-rated Manistee and then to Newberry, the Northmen proved why they were called "the team that wouldn't quit" by upsetting Cheboygan 7-6. This victory, sparked by Bob Woodruff's smashing line plunges, fired up the Northmen enough to overpower the vaunted Vikings of Cadillac 14-13. Even a muddy Homecoming couldn't drown out the Northmen's fire as they slipped and slid to a 6-0 victory over Ludington. But disaster struck to the tune of 39-7 as the Trojans stepped in to cool Petoskey's winning streak. Against an enthusiastic Rogers City eleven the Northmen tied 7-7 on the frozen gridiron to end a thrilling season.



Assistant Coaches White and Fowler, Head Coach Van Wie

MANAGERS



Sheldon Buckmaster



Bob Shafer

Camera shy

Doug Treloar -- Statistician

Bob Starmer -- Manager



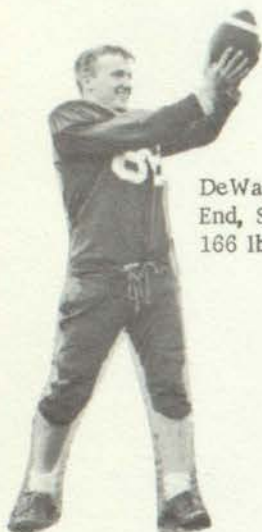
Bruce Morgan
Co-Captain
Halfback, Sr.
150 lbs., 5'10"



Bob Woodruff
Fullback, Sr.
170 lbs., 5'9"



Jim Ranney
Co-Captain
Tackle, Sr.
183 lbs., 6'



DeWayne Annis
End, Sr.
166 lbs., 5'6"



Fred Wheaton
Guard, Sr.
175 lbs., 6'



Buzz Hastings
Halfback, Sr.
160 lbs., 5'10"



Ken Klumpp
End Sr.
170 lbs., 6'1"



Ray Lewis
Center, Sr.
155 lbs., 5'11"



Rick Brown
Tackle, Sr.
190 lbs., 6'1"



John Curtiss
Halfback, Sr.
130 lbs., 5'5"



Photo, Courtesy Petoskey News Review



Augie Stolt
Guard, Sr.
155 lbs., 5'10"



Ed Schroeder
Tackle, Sr.
187 lbs., 6'1"



Ray Chapin
Fullback, Sr.
170 lbs., 6'1"



Tom Sutherland
Quarterback, Soph.
162 lbs., 5'9"



Jack Hiller
Guard, Sr.
160 lbs., 5'9"



Barry Malone
Quarterback, Sr.
156 lbs., 5'9"



Brook Smith
End, Jr.
158 lbs., 6'



Eugene Brown
Fullback, Sr.
146 lbs., 5'10"



Jim Titus
Halfback, Jr.
160 lbs., 5'10"



Ted Borisch
End, Sr.
155 lbs., 5'11"



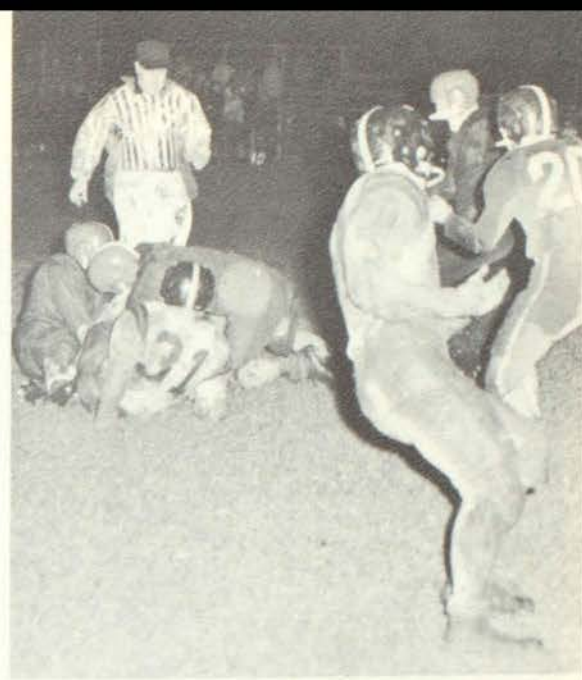
George Bare
Halfback, Soph.
160 lb., 5'9"



Marvin Bixby
Tackle, Sr.
190 lbs., 6'



Ralph Perry
End, Sr.
150 lbs., 5'11"



Photo, Courtesy Petoskey News Review



Don Jones
Center, Jr.
195 lbs., 6'



Jim Duree
Tackle, Jr.
194 lbs., 5'8"



Tom Smart
End, Jr.
150 lbs., 5'11"



Swede Johnson
Center, Jr.
175 lbs., 5'11"



Leroy McMillan
Halfback, Jr.
145 lbs., 5'9"



Dave Hewitt
End, Jr.
135 lbs., 5'6"



Dave McCarthy
Quarterback, Soph.
130 lbs., 5'9"



Harry Stolt
Halfback, Jr.
146 lbs., 5'8"



Wayne Miller
Guard, Jr.
145 lbs., 5'11"



Tom Gough
Tackle, Jr.
180 lbs., 5'9"



John Meyer
Tackle, Jr.
185 lbs., 6'1"

Missing . . .
Bill Streeter
Center, Jr.
180 lbs., 6'



Photo, Courtesy Petoskey News Review

J. V. FOOTBALL

PERFECT RECORD - 7 WINS



FIRST ROW: J. Hand, R. Johnson, J. Ellenberger, J. Hickman, E. White, F. McGeath, D. Cilke, T. Boyer, T. Hooker, E. Boland, D. Davis; SECOND ROW: C. Broman, R. Bricker, B. Wells, D. Witte, B. Cristoff, S. Garthe, D. Dombroski, J. Smith, J. Brecheisen, T. Walker, R. Schweigert; THIRD ROW: Coach Splan, J. Honeysette, D. Crosser, C. Stewart, R. Tillotson, T. Wright, G. Towns, T. Hayner, T. Walker, G. Swadling, H. Hibbler, J. Stanley.

J. V. BASKETBALL



FIRST ROW: F. McGeath, H. Smith, D. Treloar, R. Spencley, S. Garthe, C. Broman, D. McCarthy, T. Sutherland; SECOND ROW: R. Tillotson, J. Smith, G. Bare, R. Johnson, Coach Fowler, D. Cilke, T. Hand, E. White, T. Schweigert.

VARSITY

BASKETBALL

Team



Coach Zographos

Camera Shy

Mike Schultz, manager

JUMP!

Although on the wrong end of a losing season, the Northmen cagers were no easy touch. Coach Zographos's starting five had height, speed, and desire to win. School spirit ran high as they beat Alpena Catholic Central by a large margin in the districts, but Rogers City caught Petoskey on a bad night in the next game. Yet the Northmen played hard throughout the season and gave their best.

PETOSKEY

1959-1960

Petoskey 52.	Boyne City 35
Petoskey 41.	Alpena 62
Petoskey 51.	Cheboygan 53
Petoskey 55.	Cadillac 41
Petoskey 43.	Alumni 50
Petoskey 40.	Charlevoix 47
Petoskey 41.	Traverse City 44
Petoskey 49.	Cadillac 57
Petoskey 52.	Rogers City 47
Petoskey 54.	Manistee 60
Petoskey 57.	Boyne City 62
Petoskey 62.	Cheboygan 48
Petoskey 46.	Traverse City 80
Petoskey 56.	Charlevoix 57
Petoskey 60.	Newberry 75
Petoskey 56.	Rogers City 59
Petoskey 74.	Alpena Catholic 56°
Petoskey 47.	Rogers City 55°
TOTALS 936.	988



John Rigg
Forward
6', 180 lb.



Ed Colwell
Center
6'2 1/2", 170 lb.



Brook Smith
Forward
6', 158 lb.



Ray Chapin
Forward
5'11 1/2", 170 lb.



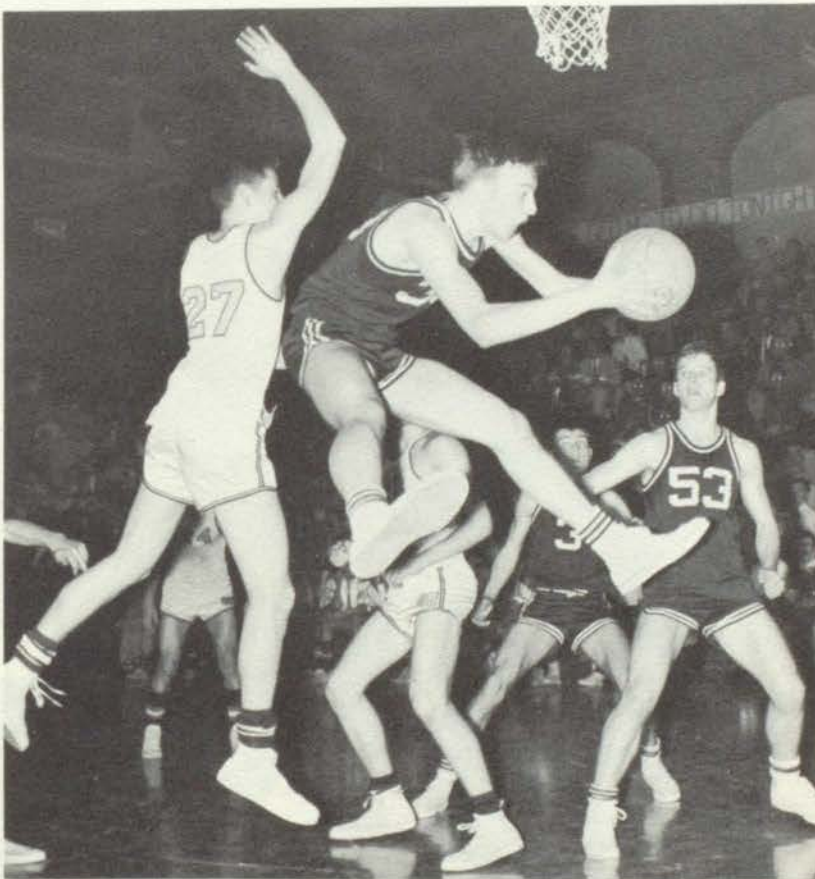
Barry Malone
Guard
5'8", 160 lb.



Mike Dominic
Guard
5'7", 121 lb.



Jim Titus
Guard
5'11", 165 lb.





Bob Woodruff
Forward
5'8 1/2", 175 lb.



Willy Shomin
Guard
5'9", 145 lb.



Harvey Gibson
Guard
5'9", 150 lb.



John Meyer
Forward
6'1", 180 lb.



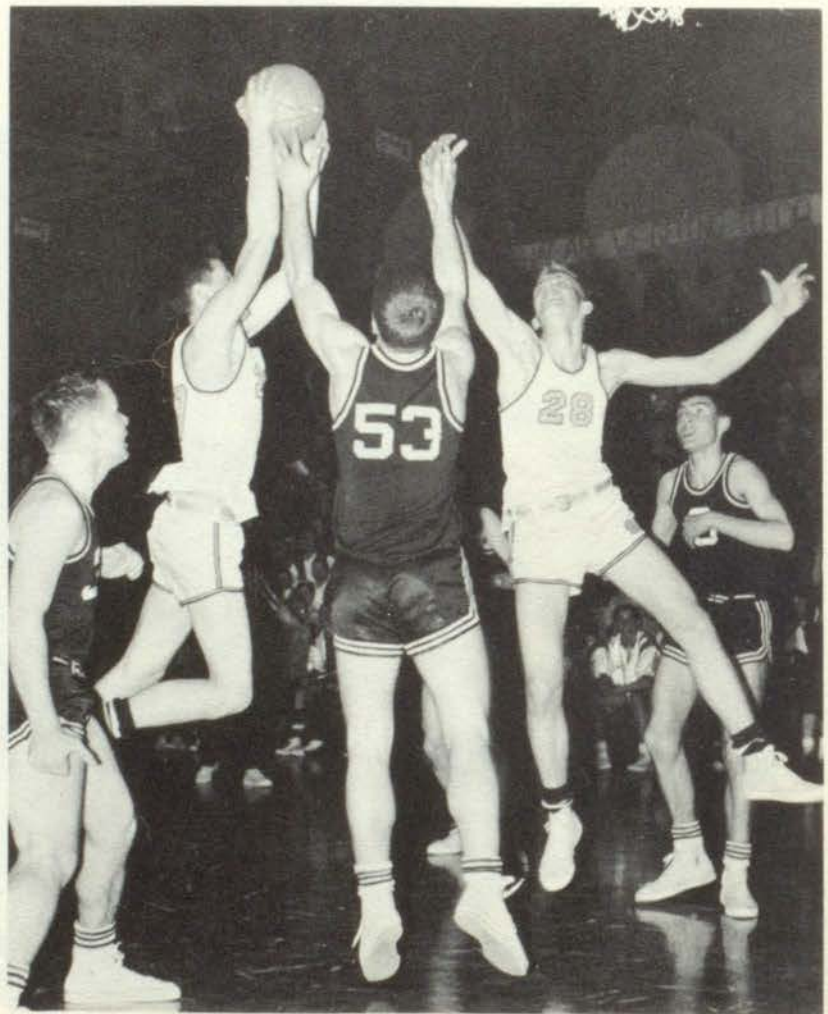
Ken Klumpp
Center
6' 1/2", 170 lb.



Nick Stringer
Forward
6' 1/2", 150 lb.



Mike Rosenow
Guard
6', 150 lb.



INTRAMURAL BASKETBALL

"PISTONS"



Left to Right: Harry Stolt, DeWayne Annis, Augie Stolt, Marvin Veurink, Norm Stevens, Buzz Hastings.



TOP SCORER: Marvin Veurink

"GASSERS"



Left to Right: Fred Wheaton, Larry Laughlin, Ralph Perry, Sheldon Buckmaster, Charles Hooker, Eugene Brown.



ski team

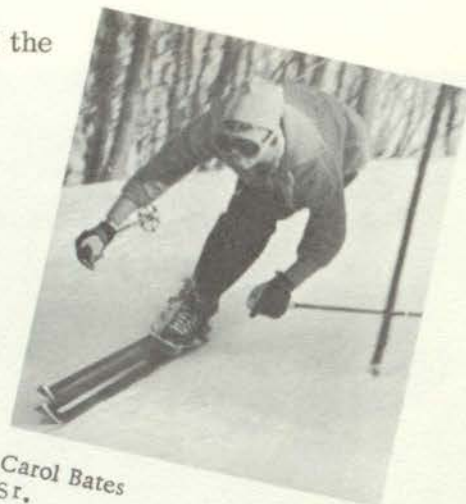


Coach Splan

Coach Splan's ski team flashed through a full schedule of ski meets with a winning record. Under stiff competition, Jim Ranney led the boy's team to a record of three wins, one second place, and one loss. The girls did slightly better by winning four and placing second in the remaining meet, relying on Carol Bates. As usual, Coach Splan can be very proud of the fine showing of the P.H.S. Ski Team.



Jim Ranney
Sr.



Carol Bates
Sr.



Ed Schroeder
Sr.



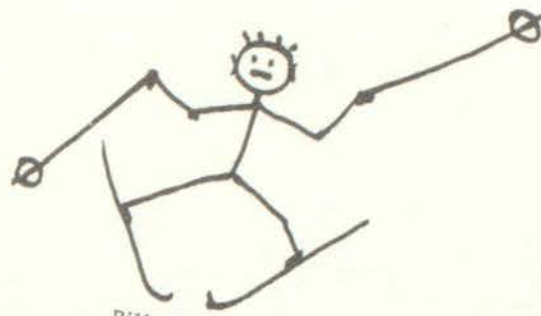
Pinky McCutcheon
Sr.



Tom Paxton
Sr.



Barb Burns
Jr.



Bill Shorter
Jr.



Tom Smart
Jr.



Judy Kiffer
Jr.



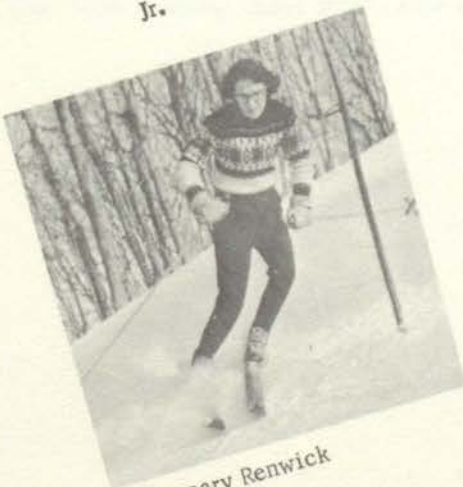
Wayne Miller
Jr.



LaVaun Hewitt
Fresh.



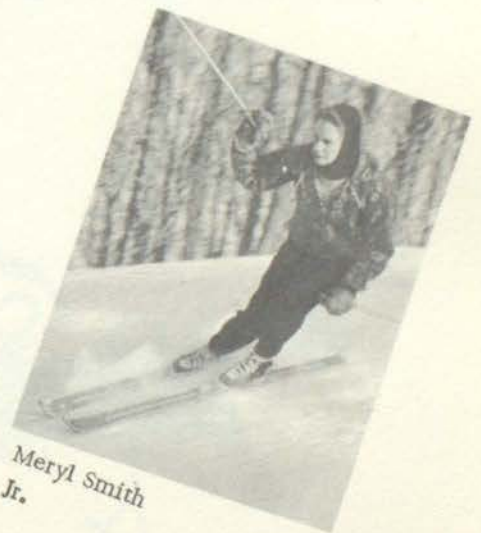
Ron Horning
Soph.



Rosemary Renwick
Fresh.



David Dombroski
Fresh.



Meryl Smith
Jr.

track team



FIRST ROW: K. Granger, D. Crosser, E. White, R. Johnson, F. McGeath, J. Ranney, B. Woodruff, D. Annis, W. Miller, B. Morgan, P. Garrett, G. Bare; SECOND ROW: Coach VanWie, J. Ellenberger, R. Putman, J. Hand, R. Chapin, T. Sutherland, J. Curtiss, J. Hickman, T. Walker, L. McMillan, R. Holck, B. Christoff, T. Walker, Coach Splan; THIRD ROW: D. McMillan, T. Webster, R. Bricker, J. Brecheisen, B. Malone, J. Zaiger, V. Renwick, W. Conley, D. Jones, D. Dell, D. Carpenter, S. Buckmaster.



tennis team



FIRST ROW: Stuart Garthe, Jim Titus, Coach Fowler, Hugh Smith, Doug Reloar; SECOND ROW: Larry Laughlin, Duane Cilke, Mike Rosenow, Brook Smith, John Rigg.



golf team



LEFT TO RIGHT: Willy Shomin, Ralph Perry, Henry Culp, Coach Zographos, Harvey Gibson, Ed. Schroeder, John Still.



