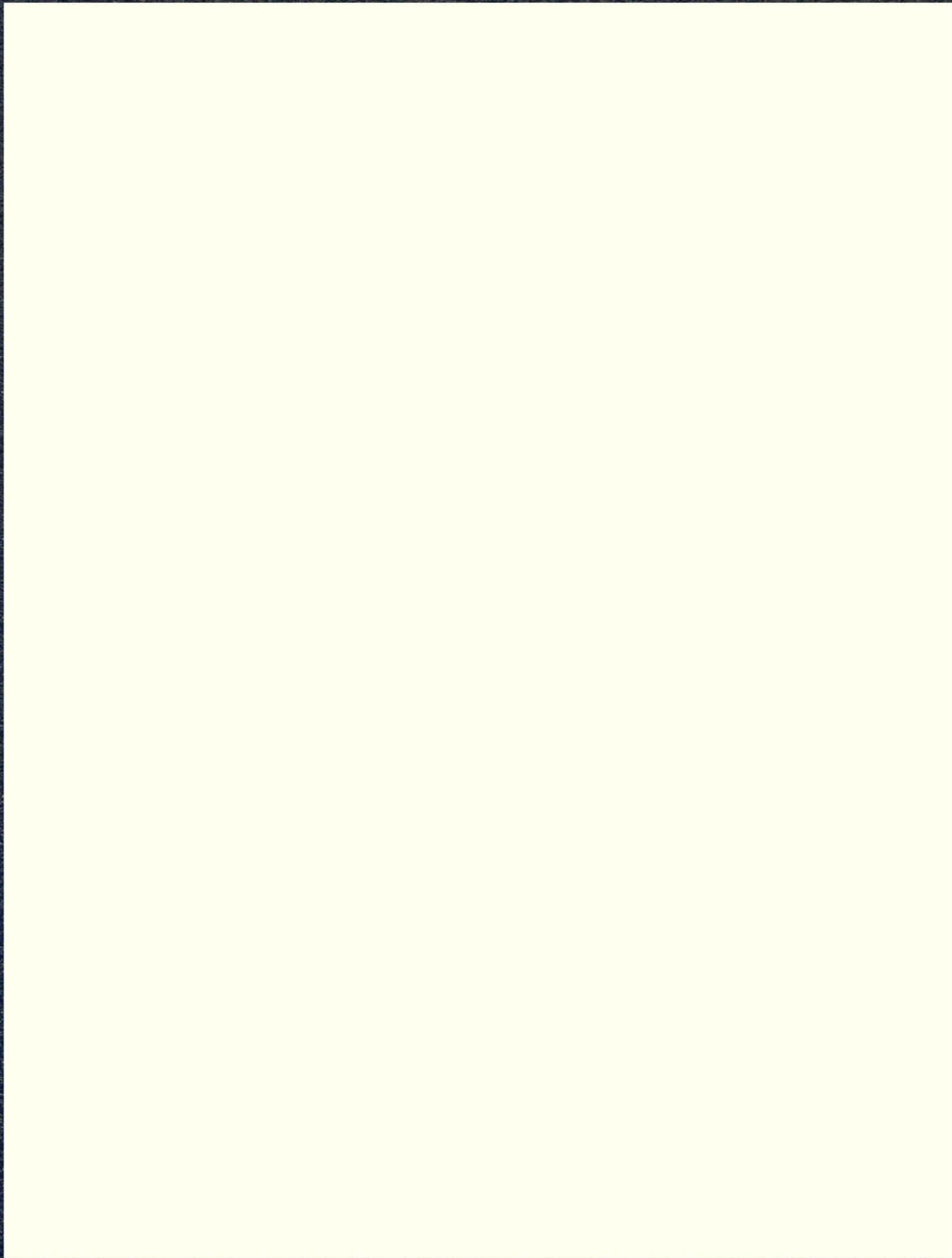


PETOSEGAN

1961

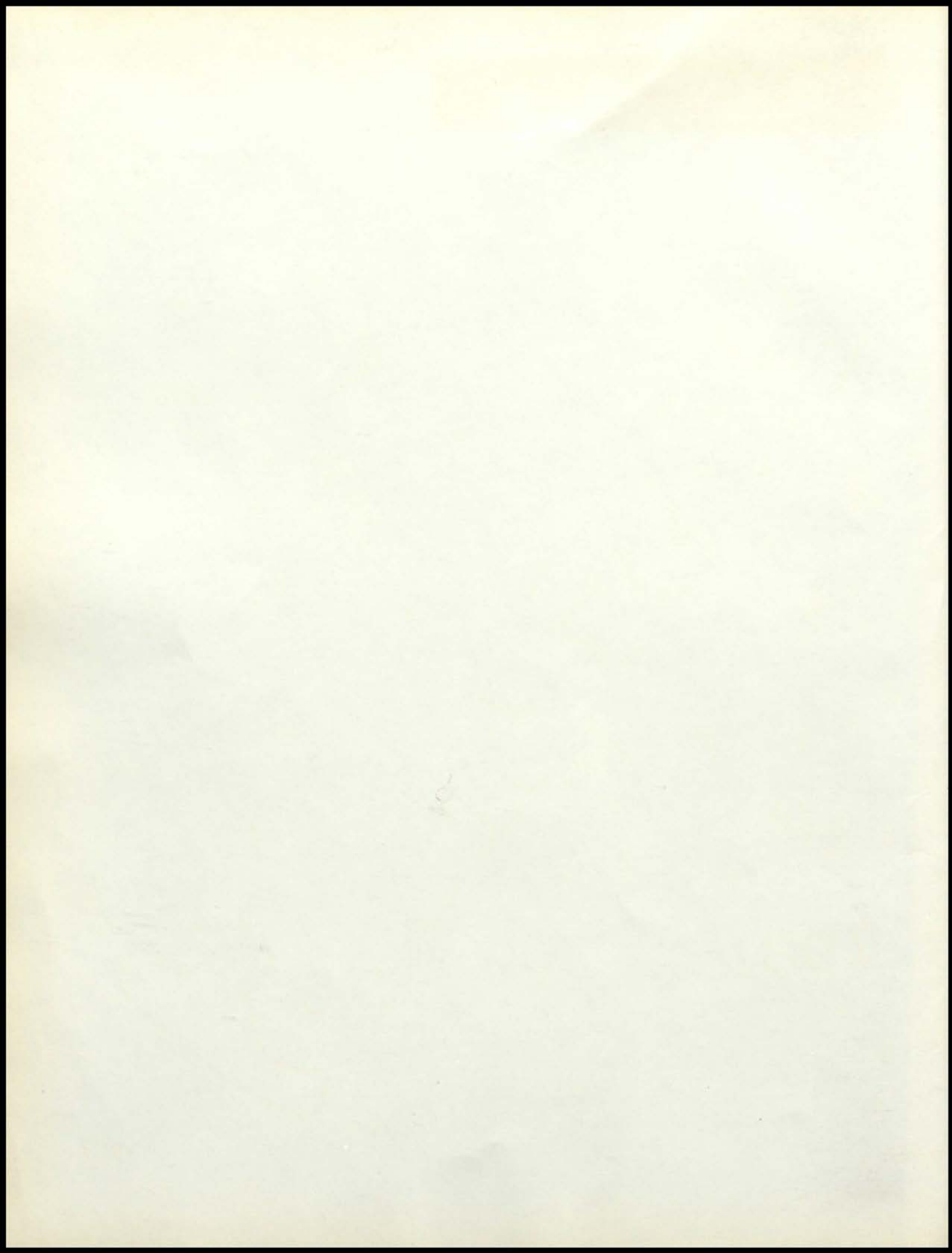


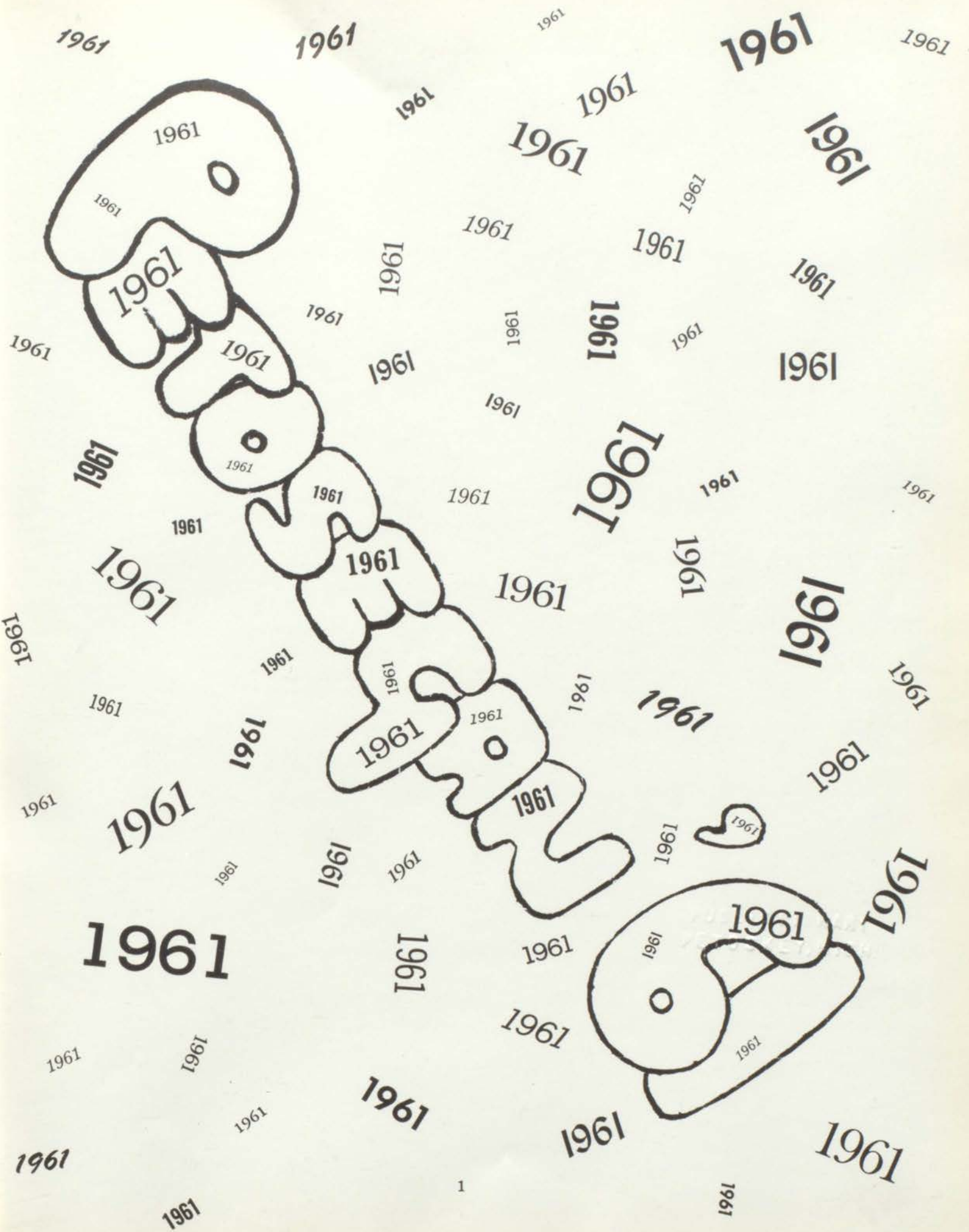


1961

1961

1961

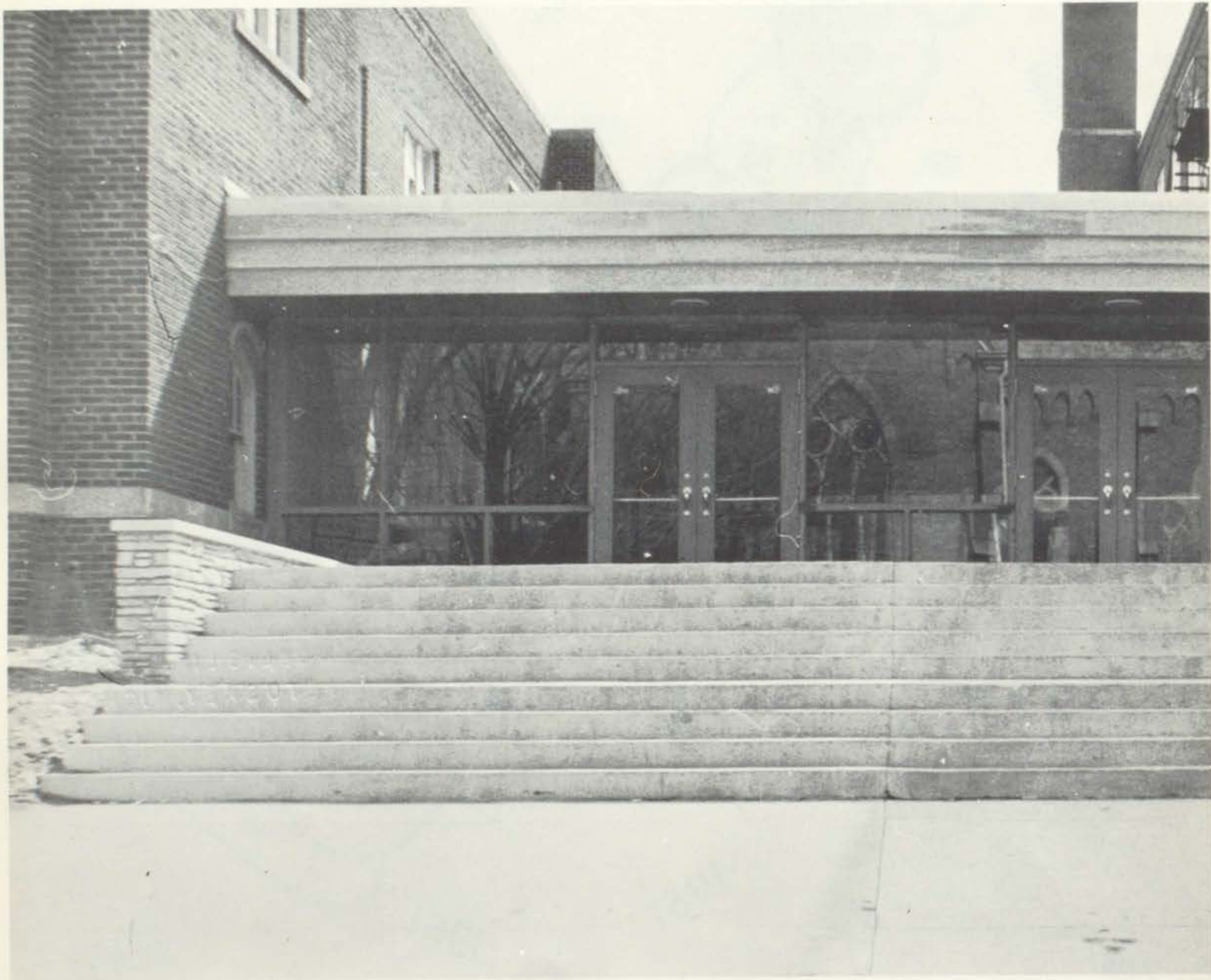




Petoskey High School

Petoskey, Michigan

1961



Introduction

The graduating class of 1961 proudly presents The Petosegan.

As we have remained a single group through four years, we have many fond memories.

These memories which are dear to us will remain in our thoughts for years to come: The J-Hop, the success of our class plays, Homecoming, and rooting at the various games and attending the many activities.

Our final year together is climaxed as we receive our diploma.

This may be the end of our class as a group, but there will never be an end to the spirit of 1961.

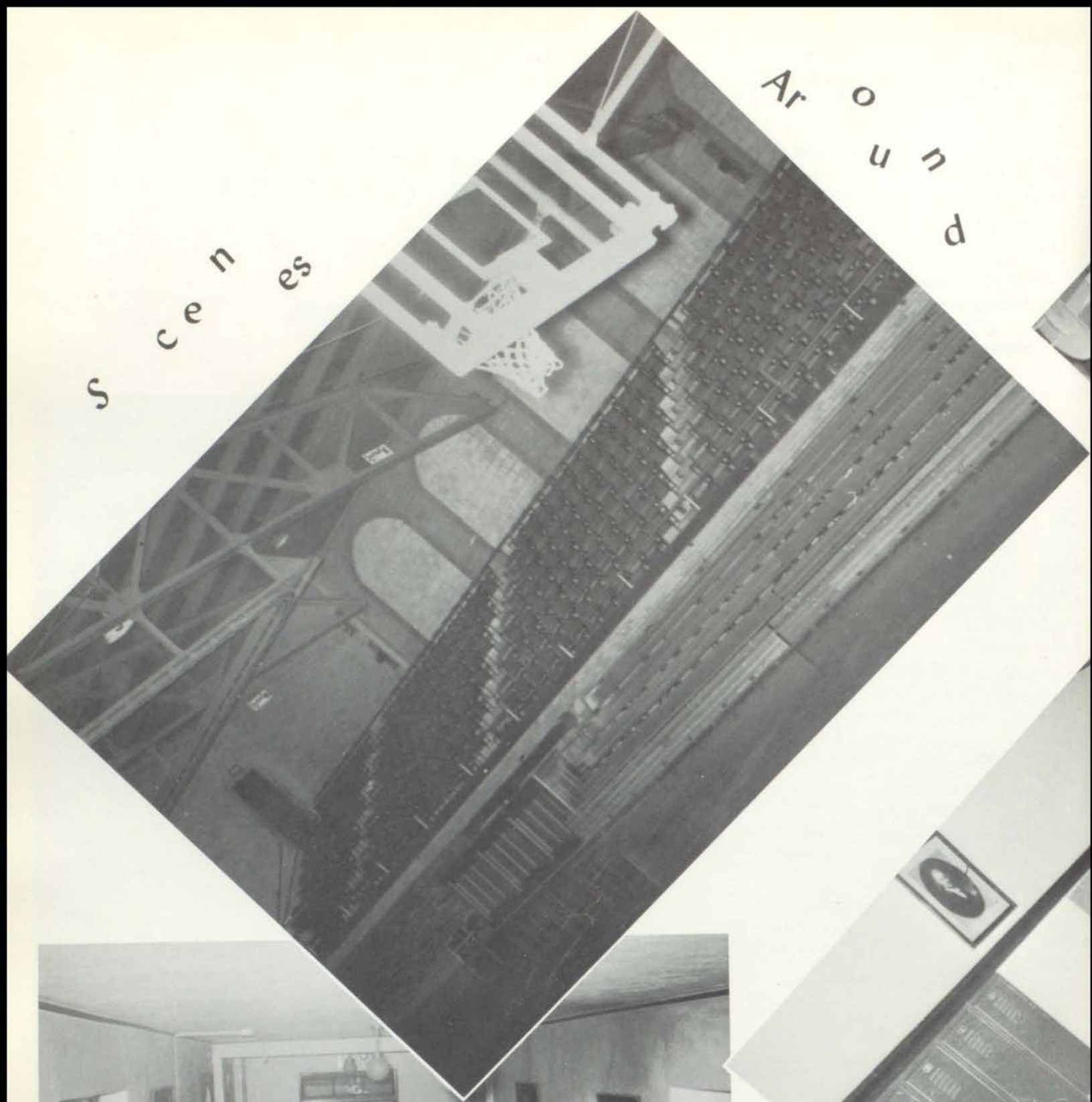
Contents

Faculty	7
Seniors	13
Undergrads	29
Activities	45
Music	61
Sports	71

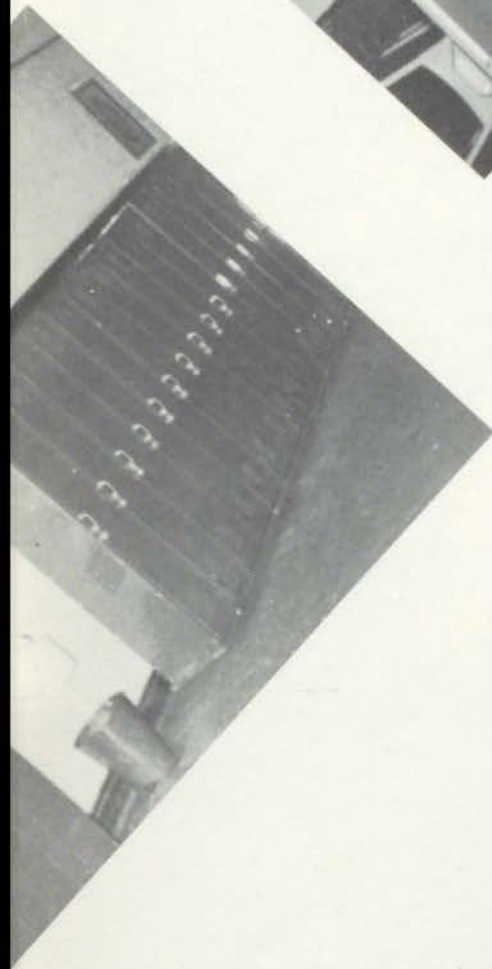
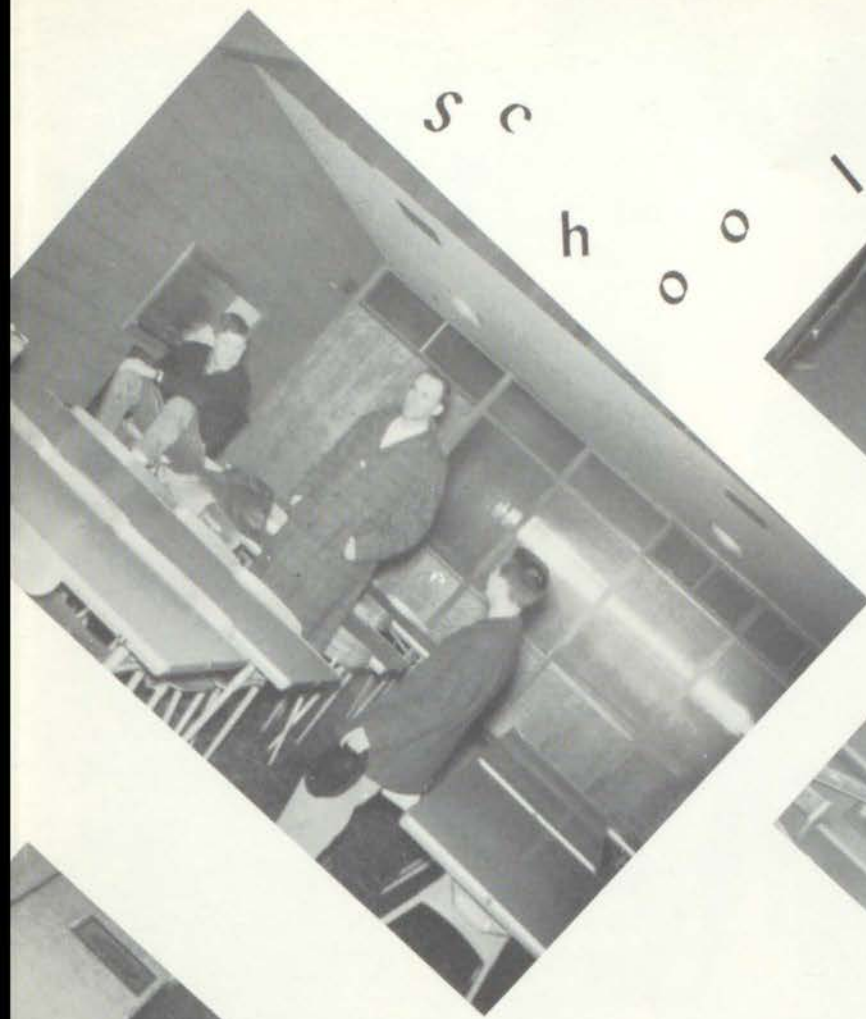


S
c
e
n
e
s

A
r
o
u
n
d



S
c
h
o
o
l





Front Row: E. Belmer, B. Vincent, W. Foltz, A. Belmer.
 Back Row: J. Terpening, J. Pagel, A. Wheaton, R. Goodwin,
 H. Dunshee, T. Benington.



SCHOOL NURSE
 Alma Cessar



Fletch Johnson



COOKS' HELPERS

Kathy Dielman, Mary Strong, Mrs. Furgeson, Mrs. Eaton



COOKS

Mrs. Lamparter

Mrs. Sarna

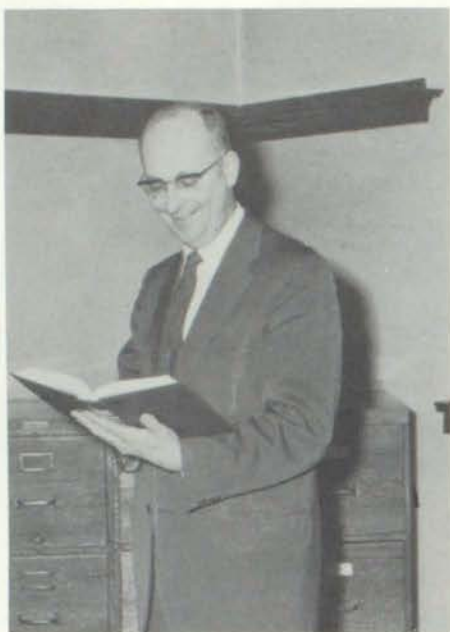


CUSTODIANS

Ernie Belmer, Emery Belmer, Olin Brecheisen, Al David



FACULTY



WARREN E. LUTTMAN
Superintendent
A.B., Western Mich. Univ.



OLIVER AHO
Principal
B.S., Northern Mich.
M.A., U. of M.



HELEN KOPER
Secretary to the Superintendent



CATHERINE SCHWARTZFISHER
Secretary to the Principal



FRIEDA HELDNER
Bookkeeper



JEAN FETTIG
Secretary to Mr. McAlvey



MAXINE BECKER
B.A., Albion College
English



VIRGINIA BUETTNER
B.S., M.S.U.
Home Economics



MARGUERITE BECKLEY
B.S., Central Mich.
Math and History
Librarian at N.C.M.C.



CLIFFORD BUCKMASTER
B.S., Ferris Institute
Junior Advisory
Commercial



HELEN COLE
B.S., Central Mich.
7th Grade Advisory
Math, Jr. High
Jr. High Student Council



RUTH CHAMBERLAIN
B.S., Central Mich.
Cafeteria Manager
Home Economics



ROBERT M. CLARK
B.A., DePauw and M.A., M.S.U.
Sr. Boys Advisory
Spanish, History, and Science
Basketball and Golf Coach
Assistant Football Coach



JOHN R. EMSWILLER
B.S., M.S.U.
Sophomore Advisory
Agriculture
F.F.A. Advisor



CHARLES CROSSER
B.S., Ohio Univ.
M. of Ed., Bowling Green State
Sophomore Advisory
Math



ALLEN GARLETS
A.B., Ball State Teacher's Col.
8th Grade Advisory
F.T.A. - Co-Advisor
English, Jr. High
9th and 10th Grade Basketball



JAMES FOWLER
A.B., Kalamazoo College
Personnel Director
Jr. High History
Varsity Club Advisor
Head Football Coach
Tennis Sociology



EDWARD HASSE
B.S., U. of Ind.
Speech and Hearing Therapy



STANLEY GARTHE
B.S., Western Mich.
Senior Advisory
Science and Chemistry



ALDEN HOWARD
B.S., Western Mich.
Power Mechanics
Ski Team Coach
Driver-Training



KATHERINE INGLIS
A.B., U. of M.
Junior Advisory
Government and English
Social Studies
Honor Society Advisor



JAMES JINSKY
B.S., Stout State College
Menomonie, Wisconsin
Junior Advisory
Shop and Math



JANE MARKS
B.M., North Central
Librarian



DALE McALVEY
B.S., M.S.U.
M.S., O.S.U.
Co-op Training
Guidance and Counseling
Adult Education
Director of Summer School
Director of School for
physically handicapped



MARCIA MILLER
B.S., M.S.U.
Sophomore Advisory
Home Economics
F.H.A. Advisor



WILMER R. MOYER
B.S., Ithaca College
Music



DONALD F. QUADE
B.A., Lawrence College
M.A., U. of M.
Freshman Advisory
Hi-Y Advisor



MARJORIE NELSON
B.A., C.M.U.
Sophomore Advisory
English



ELAINE PRICE
B.E., Wisconsin State College
Senior Advisory
Commercial
Pep Club Advisor
Cheerleader Advisor



ANNA SIKARSKIE
A.B., Northern Mich. Col.
Senior Advisory
English and French
Tri-Hi-Y Advisor



MARY RICHWINE
B.S., Western Mich.
Gym
G.A.A. Advisor



LOUIS RIZZOLO
Art
B.S., Western Mich.
M.A., State Univ. of Iowa
8th Grade Advisory



KARL H. STAUBACH
B.A., -Spanish-U. of M.
7th Grade Advisory
English
Jr. High Social Science



MAX SMITH
B.M., M.S.U.
8th Grade Advisory
Music



WILLARD S. SPLAN
B.S., M.S.U.
Gym
Track
Reserve Football Coach.



RUTH E. THOMPSON
A.B., Lake Erie College
Freshman Advisory
English and Latin
Inkslinger Advisor



T. ARTHUR TRELOAR
Northern Mich.
Industrial Arts
Athletic Director



FLORENCE TITUS
B.S., U. of N. Y.
8th Grade Advisory
English
Reading Program
F.T.A. Advisor



DOROTHY TOWNSEND
B.A., Washburn Univ.
B.S., M.S.U.
Pep Club Advisor
Cheerleader Advisor



JOAN L. WALTERS
B.S., M.S.U.
8th Grade Advisory
Science
English
History
Tri-Hi-Y Advisor



ARLENE VAN NESS
A.B., Mt. Pleasant
M.A., U. of M.
Junior Advisory
History
Junior Red Cross



DORTHEA VRATANINA
B.A., Eastern Mich.
M.A., U. of M.
English
Hi-Light Advisor



ROBERT P. WOODRUFF
B.S., U. of M.
Social Science



RONALD WHITE
B.S., Western Mich.
7th grade Advisory
General Science
Assistant Football Coach
Varsity Club Advisor
Jr. Varsity Basketball Coach
Track Coach



Seniors



President Tom Gough
 Vice President Harry Stolt
 Secretary-treasurer Jim Titus

When we entered high school we knew that the time was slowly moving onward to our goal of becoming seniors, but we hadn't realized that the end would come so quickly. But was it really the end? We found that it wasn't, but rather, that we had come to a bend in our learning, where we could go out to the sea of choice and lay our course.

As Freshmen we experienced more dependence for ourselves by being able to choose a few of the subjects that interested us most.

Then came our Sophomore year and we were face to face with that big, controversial scare: the term paper. But we received our reward by learning to do that which was before us.

With our Junior year came a very busy period. We were bursting with pride when the curtain closed on our Junior Play, "Cheaper by the Dozen." It was truly hard work, laughter, and joy combined. We chose "Paradise of the Deep" as our theme for our J-Hop. It was a real task, but we enjoyed working together to make it the great success that it was. We also enjoyed our fellowship together in our own cafeteria for the Junior-Senior Banquet.

Being seniors at P.H.S. meant a full schedule of activities. The Homecoming, with the queen and her court, the floats, and the game to climax the event, was a hi-light of the year. The natural performance of our senior play, "Seventeenth Summer," was so real and true to life that it melted our hearts.

With the help of our advisors and class officers, Tom Gough, Harry Stolt, and Jim Titus we feel that our senior year at P.H.S. left us with truly great memories that will go on with us forever.



Advisors: Mrs. Sikarskie, Mrs. Price, Mr. Clark, Mr. Garthe.



Ruth Ash



Cherie Barnum



Brian Becker



Kathy Behling



Dick Buckstiegel



Barb Burns



Kay Cadwallader



Jim Carls



Dick Gilke



Donna Clancy



Judy Clark



Wallace Conley



Alfred Conrad



Sharon Cooper



Sherry Groff



Clem Della Pietra



Art Dennis



Bette Deschermeier



Mike Dominic



Thora Duncan



Jim Duree



Joy Duree



Rhea Elder



Fred Ellis



Jerry Festerling



Donna Fraley



Bunny Garthe



Linda Garver



Karen George



Linda Gibbard



Ann Gillespie



Juanita Glaze



Tom Gough



Ken Granger



Herb Hamill



Sharon Hanna



Jan Hatch



Dave Hewitt



Doug Hickman



Ken Hickman



Grant Hood



Dave Huczek



Bob Hudson



Swede Johnson



Don Jones



Orville Kalbfleisch



Judy Keck



Judy Kiffer



Judy Kilmer



Linda Knapp



Volker Knoppke



Deloise Kughman



Gordon Laughlin



Kay Luebke



Jim Luesing



Roberta Malloy



Jerry Martin



Beverly Matz



Jean Matz



Larry Maxfield



Ted McCutcheon



Barrie McKinnon



Lynnet McMaster



Le Roy McMillan



John Mental



John Meyer



Bob Miller



Wayne Miller



Joyce Neilson



Fay Notestine



Marilyn O'Brien



Carol Oehrli



Merle Parsons



Irvin Potts



Terry Reber



Betty Reid



Varn Renwick



Glenda Rosevear



Karen Schaller



Mike Schulz



Alexa Sehr



Willy Shomin



Bill Shorter



Jean Sikarskie



Jan Slocum



Tom Smart



Brook Smith



Dan Smith



Meryl Smith



Pat Smith



Susie Smith



Rachel Sommer



Louise St. Amand



Harry Stolt



Bill Streeter



Nick Stringer



Mary Strong



Jo Sweany



Bob Taylor



Jim Titus



Karen Warren



Mary Washburne



Jaci Wilhelm



Marcia Woodruff



Dora Wormell



Ernie Wurst



Carol Yaich

Senior Directory

- RUTH LEOTA ASH**
F.H.A. 1,2; Choir 2,3; Girls' Glee Club 1.
- CHERIE LYN BARNUM**
G.A.A. 1,2,3; Ink Slingers 4; Choir 2,3,4;
Band 1,2,3,4; Sextette 4.
- BRIAN ARNOLD BECKER**
F.F.A. 1,2,3,4, Parliamentarian.
- KATHRYN ANN BEHLING**
F.H.A. 1,2,3; Band 1.
- RICHARD EDWARD BUCKSTIEGEL**
Student Council 3,4; Hi-Y 1,2,3,4; Senior
Play 2,3,4; Junior Play 1,2,3; Tennis 3,4;
Choir 1; Band 1,2,3,4.
- BARBARA JEAN BURNS**
Student Council 3; Tri-Hi-Y 2,3,4; Sub
Deb Club 2,3; G.A.A. 1,2; Dramatics 2;
Ink Slingers 2,3; National Honor Society
4; Ski Team 1,2,3,4.
- BETTY KAY CADWALLADER**
Student Council 4; Tri-Hi-Y 2,3; F.T.A.
3,4; Senior Play 4; Junior Play 3; Dra-
matics 1,2,3; Ink Slingers 1,2,3,4, Secre-
tary-treasurer; Choir 2,3,4; Sextette 4;
Thespians 3.
- JAMES WILLIAM CARLS**
- RICHARD ELMER CILKE**
Co-op Training 3,4.
- DONNA CLANCY**
Student Council 4; Tri-Hi-Y 1,2,3, Chap-
lain; F.H.A. 1; G.A.A. 1,2; Hi-Light Staff
1; Dramatics 3; Choir 1,2,3,4.
- JUDITH ANN CLARK**
Girls' Glee Club 1.
- WALLACE CONLEY**
Track 3; Ski Team 4.
- AL CONRAD**
- SHARON COOPER**
Girls' Glee Club 1.
- SHARON DEE CROFF**
Student Council 2; Tri-Hi-Y 2,3,4; Pep
Club 1,2,3,4; G.A.A. 1,2; Band 1,2,3,4.
- ROGER DELL**
- CLEM DELLA PIETRA**
Choir 4; Ski Team 4.
- ARTHUR EARL DENNIS**
Football 2,4; Golf 3,4.
- BETTE KAYE DESCHERMEIER**
Pep Club 1,2; Hi-Light Staff 3; Ink Sling-
ers, 2.
- MICHAEL DOMINIC**
Hi-Y 3,4; Basketball 1,2,3,4; Choir 3.
- THORA JEAN DUNCAN**
Student Council 1; Tri-Hi-Y 1,2; Pep
Club 1,2,3,4; G.A.A. 1,2,3; Cheerleading
1,2,3,4.
- JIM DUREE**
Football 3,4.
- RHEA JO ELDER**
F.H.A. 1; Hi-Light Staff 1,3,4.
- GERALD GENE FESTERLING**
Student Council 1; Class Officer 1, Presi-
dent.
- DONNA LOU FRALEY**
Pep Club 3; F.H.A. 1; G.A.A. 3; Girls'
Glee Club 1.
- BARBARA ANN GARTHE**
Tri-Hi-Y 2,3,4; Pep Club 1; Sub-Deb
Club 1,2,3; F.N.A. 4; Senior Play 4, Ad-
vertising Committee; Junior Play 3, Stu-
dent Director; Dramatics 2,3, President;
Choir 3,4; Band 1,2,3,4; National Honor
Society 4; Petosegan Staff 4; Glee Club
1,2; Thespians 3,4.
- LINDA LOU GARVER**
F.T.A. 3; G.A.A. 1,2,3; Choir 4; Band 1,
2,3,4; Girls' Glee Club 1,3,4.
- KAREN KAY GEORGE**
Tri-Hi-Y 1,2; Pep Club 1,2; G.A.A. 1,2.
- LINDA ANN GIBBARD**
Tri-Hi-Y 2,3,4; Pep Club 1,2,3,4, Treas-
urer 3; Senior Play 4; Junior Play 3;
Dramatics 2,3, Vice-President 3; Choir
3,4; Band 1,2,3,4; Dance Orchestra 2,3,4;
Sextette 3,4; National Honor Society 4;
Thespians 3; Girls' Glee Club 2.
- ANN B. GILLESPIE**
Tri-Hi-Y 2,3,4; G.A.A. 1,2,3, Treasurer
2, Vice-President 3; Hi-Light Staff 3;
Senior Play 4, Costumes; Dramatics 2,3;
Ink Slingers 1,2,3,4; Band 1,2,3,4; Dance
Orchestra 3,4; National Honor Society 4;
Petosegan Staff 4; Girls' Glee Club 1,2.
- JUANITA M. GLAZE**
Choir 1,2,3,4; Girls' Glee Club 1,3,4.
- THOMAS PATRICK GOUGH**
Student Council 1; Hi-Y 2,3,4; Junior Play
3; Football 1,2,3,4; Class Officer 3, Vice-
President, 4, President.
- KENNETH RAY GRANGER**
Hi-Y 2,3; Pep Club 1; Junior Play 3; Ink
Slingers 2; Track 1,2,3; National Honor
Society 3,4.
- HERBERT ALLEN HAMILL**
Hi-Y 2,3,4; Junior Play 3.
- SHARON KAY HANNA**
Tri-Hi-Y 2,3,4; Pep Club 2,4; F.H.A. 1;
Dramatics 2,3; Ink Slingers 2; Dance
Orchestra 2,3,4; Petosegan Staff 4.
- JANICE LORRAINE HATCH**
G.A.A. 3; Ink Slingers 3.
- DAVID GORDON HEWITT**
Hi-Y 2,3,4; Pep Club 1; Hi-Light Staff
3,4; Junior Play 3; Football 1,2,3,4;
Basketball 1; Choir 1,2,3.
- DOUGLAS HICKMAN**
F.F.A. 1,2,3,4, President 4; Football 1,2,
3; Track 1,2.
- KENN V. HICKMAN**
- J. GRANT HOOD, JR.**
Hi-Y 2,3,4, President 4; Senior Play 4;
Junior Play 3; Band 1,2,3,4; Dance Or-
chestra 3,4; National Honor Society 3,4;
Thespians 3,4.
- DAVID JON HUCZEK**
Football 2,3,4; Golf 2,3,4.
- ROBERT EARL HUDSON, JR.**
Student Council 1; Band 1; Baseball 2;
Spanish Club 2; Co-op 2.

- RICHARD JAMES JOHNSON**
Student Council 1,2; Football 1,2,3,4, Captain 2; Choir 2,3,4; Octette 2,3,4; Class Officer 1; Varsity Club 3,4.
- DON WOODRUFF JONES**
Hi-Y 4; Senior Play 4; Ink Slingers 2; Football 2,3,4; Track 2,3,4; Choir 4; Varsity Club 4.
- ORVILLE KALBFLEISCH**
F.F.A. 1,2,3,4; Football 1,2.
- JUDY ANN KECK**
F.H.A. 4; Glee Club 4.
- JUDY-LYN KIFFER**
Tri-Hi-Y 2,3,4; Pep Club 1,2,3,4; G.A.A. 1; Senior Play 4; Dramatics 2; Ink Slingers 2,3; National Honor Society 3,4; Class Officers 2, Secretary-Treasurer; Ski Team 2,3.
- JUDITH DONNA KILMER**
F.N.A. 4, Communicating Secretary; G.A.A. 4; Glee Club 1,2,4.
- LINDA LOUISE KNAPP**
Tri-Hi-Y 2; G.A.A. 1; Tennis 2; Band 1; Cheerleader 2.
- VOLKER KNOPPKE**
Hi-Light Staff 4; Senior Play 4; Track 4.
- DELOISE KUGHMAN**
F.H.A. 1,2; G.A.A. 1,2,4; Glee Club 1.
- GORDON JOHN LAUGHLIN**
Hi-Y 2,3, Secretary 4, Vice President; Senior Play 4; Junior Play 3; Tennis 2,3,4; Band 1,2,3,4; Dance Orchestra 2,3,4; Ski Team 4.
- KAY SHIRLEY LUEBKE**
Tri-Hi-Y 2,3,4; Pep Club 1,2,3,4; Hi-Light Staff 1,2,3, Editor-in-Chief; Petosegan Staff 4, Business Manager.
- JIM LUESING**
Student Council 1; F.F.A. 1,2,3,4, Reporter; Football 1,2; Track 1.
- ROBERTA FLORENCE MALLOY**
G.A.A. 1,2,3, Student Manager; Choir 1,2,3,4; Glee Club 1,2,3; Library Staff 1,3,4.
- GERALD DENNIS MARTIN**
Tennis 3,4; Band 1,2; Ski Team 4.
- BEVERLY ANN MATZ**
Library Staff 4.
- JEAN MARIE MATZ**
Tri-Hi-Y 2,3,4, President; Pep Club 1,2,3,4; G.A.A. 1,2,3, Secretary; Junior Play 3; Dramatics 1,2,3; Choir 3,4; Band 1,2,3,4; Dance Orchestra 2,3,4; National Honor Society 4; Thespians 3,4.
- LARRY A. MAXFIELD**
- CHARLES THEODORE McCUTCHEON III**
Hi-Y 3,4; Petosegan 4.
- ELIZABETH K. McKINNON**
Student Council 3; Tri-Hi-Y 3,4; Pep Club 4; Sub-Deb Club, 2,3; Vice President; Hi-Light Staff 3; Petosegan 4.
- LYNNET LEE McMASTER**
Tri-Hi-Y 2,3,4; Pep Club 1,2,3,4; Treasurer; G.A.A. 1; Senior Play 4; Student Director; Dramatics 4; Choir 2,3,4; Petosegan Staff 4; Glee Club 1; Homecoming Court 4.
- LEROY RICHARD McMILLAN**
Football 1,2,3,4; Basketball 1,2; Track 1,2,3; Manager; Glee Club 1.
- JOHN HENRY MENTAL**
Football 4.
- JOHN G. MEYER**
Student Council 1,2; Hi-Y 4; Pep Club 4; F.T.A. 3,4; President; Senior Play 4; Football 1,2,3,4; Basketball 1,2,3,4; Tennis 1,2; Choir 2,3,4; Band 1,2,3; Octette 2,3,4; National Honor Society 4.
- ROBERT STEWART MILLER**
Hi-Y 3,4; Petosegan Staff 4.
- WAYNE ROBERT MILLER**
Student Council 2; Football 1,2,3,4; Track 1,2,3,4; Choir 2; Ski Team 3; Varsity Club 3,4, Secretary.
- JEANNE MORRIS**
- JOYCE ELIZABETH NEILSON**
- FAYTH E. NOTESTINE**
Hi-Light Staff 3,4, Exchange Editor; Junior Play 3; Dramatics 2,3,4; Ink Slingers 2; Choir 2,3,4; Petosegan Staff 4; Glee Club 2,3,4; Thespians 3,4.
- MARILYN RAE O'BRIEN**
- CAROL K. OEHLI**
Tri-Hi-Y 3; F.H.A. 1; Hi-Light Staff 2,3, Advertising Manager; Choir 2,3.
- JOSEPH MERLE PARSONS**
Hi-Y 2,3,4; Senior Play 4; Golf 2,3; Band 1,2,3,4; Dance Orchestra 3,4.
- IRVIN WILBUR POTTS, JR.**
Hi-Y 4; Ski Team 4; Basketball 4.
- THERESA MARTHA REBER**
Tri-Hi-Y 2,3,4, Treasurer; F.H.A. 4, President; F.T.A. 3,4; Senior Play 4, Wardrobe Mistress; Choir 3,4; Band 1,2,3,4; National Honor Society 4.
- BETTY REID**
Student Council 2; Tri-Hi-Y 2,3,4, Vice President; Pep Club 1,2,3,4; Sub-Deb Club 2,3,4; G.A.A. 1,2, Secretary; Senior Play 4; Junior Play 3; National Honor Society 4; Class Officers 3, Secretary.
- ROSS VARNUM RENWICK, JR.**
Hi-Y 3,4, Treasurer; Senior Play 4; Football 1; Track 3,4; Choir 4; Band 1,2,3,4; Dance Orchestra 3,4; Ski Team 2,3,4.
- GLENDA MARIE ROSEVEAR**
Tri-Hi-Y 2,3,4; Pep Club 1,2,3,4, President; G.A.A. 1; Choir 2,3,4; Cheerleader 2,3,4; Homecoming Queen 4.
- BARBARA ANN ROSSELIT**
- KAREN KATHLEEN SCHALLER**
Pep Club 1,4; G.A.A. 1,2; Junior Play 3, Costumes; Dramatics 2,3,4; Ink Slingers 1,2,3,4, Program Chairman; Choir 3,4; Band 1,2,3; Sextette 3,4; Glee Club 1,2; Thespians 3,4.
- MICHAEL SCHULZ**
Student Council 2; Ink Slingers 2; Football 1,2; Basketball 1; Tennis 1,2,3,4; National Honor Society 3,4.
- ALEXA SEHR**
Hi-Light Staff 2,3,4, Asst. Manager, Business Manager; Dramatics 2; Choir 2; Petosegan Staff, Assistant Editor.
- WILLARD JOSEPH SHOMIN**
Pep Club 4; Football 4; Basketball 1,2,3,4; Track 1,4; Golf 2,3.
- WILLIAM LEE SHORTER**
Hi-Y 2,3; Football 1,2; Tennis 1; Ski Team 1,2,3,4.
- RUTH JEAN SIKARSKIE**
Student Council 4; Tri-Hi-Y 2,3,4, Vice-President; Pep Club 1,2,3,4; Sub-Deb Club 1,2,3,4, President; F.N.A. 4, President; Senior Play 4, Committee Head; Band 1,2,3,4; Dance Orchestra 4; National Honor Society 4; Petosegan Staff 4; Glee Club 1.
- JEANNETTE MARIE SLOCUM**
F.H.A. 1,2.
- THOMAS WILLIAM SMART**
Hi-Y 2; Senior Play 4; Junior Play 3; Ink Slingers 2; Football 1,3; Track 2; Choir 4; Band 1,2,3,4; Dance Orchestra 4; Varsity Club 3,4; Ski Team 1,2,3,4.

BROOK THOMAS SMITH

Student Council 4, Vice President; Hi-Y 3,4; Ink Slingers 2,3,4; Football 1,2,3,4; Co-Captain; Basketball 1,2,3,4; Tennis 1,2,3,4; Varsity Club 2,3,4, Sergeant-of-Arms.

DAN SMITH

Hi-Y 2,4; Football 1; Basketball 1; Track 1,2; Choir 2,3,4; Octette 2,3,4; Class Officers 3, President.

MERYL ELIZABETH SMITH

Student Council 4, President; Tri-Hi-Y 2,3,4; Pep Club 1,2,3,4; Sub-Deb Club 1,2,3, Treasurer; G.A.A. 1,2; Senior Play 4; Choir 3,4; Band 1,2,3,4; Dance Orchestra 2,3,4; National Honor Society 4; Class Officers 2, Vice-President; Ski Team 3,4.

PATRICIA SUE SMITH

Pep Club 2,3,4; G.A.A. 2,3; Ink Slingers 2; Art Club 2, Vice-President.

SUZANNE CLARK SMITH

Tri-Hi-Y 2,3,4; Pep Club 1,2,3,4; G.A.A. 1,2,3,4; Senior Play 4, Student Director; Junior Play 3, Assistant Director; Band 1; National Honor Society 4; Ski Team 4.

RACHEL LEE SOMMER

G.A.A. 1,2,3; Choir 2,3,4; Sextette 2,3,4.

LOUISE KAREN ST. AMAND

Pep Club 2,3,4; G.A.A. 1,2,3,4.

HARRY CECIL STOLT

Student Council 1; F.F.A. 1,2; Football 2,3,4; Track 3; Choir 2,3,4; Octette 2,3,4; National Honor Society 4; Class Officers 2, President, 4, Vice-President; Varsity Club 4.

WILLIAM R. STREETER

Hi-Y 2,3,4; F.T.A. 4; Senior Play 4; Junior Play 3; Football 1,2,3; Basketball 1; Golf 4; Tennis 1,2; Choir 1,2,3,4; Ski Team 4, Manager.

NICHOLAS MICHAEL STRINGER

Pep Club 4; Hi-Light Staff 4; Basketball 1,2,3,4.

MARY STRONG**JOANNA JEAN SWEANY**

Tri-Hi-Y 2,3,4; Pep Club 2,3,4; G.A.A. 1; Senior Play 4; Junior Play 3; Band 1,2,3,4; Petosegan Staff 4, Art Editor; Glee Club 1.

ROBERT WILLIAM TAYLOR

Senior Play 4.

JAMES TITUS

Pep Club 4; F.T.A. 4; Senior Play 4; Ink Slingers 2,3,4, Vice-President; Football 1,2,3,4, Captain; Basketball 1,2,3,4; Tennis 1,2,3,4, Captain; Choir 4; Band

1,2,3,4; National Honor Society 3,4, President; Class Officers 1,4, Secretary-Treasurer; Varsity Club 2,3,4, Vice-President.

KAREN ANN WARREN

G.A.A. 1,2,3,4; Glee Club 1,2,3,4.

JACQUELINE KAY WILHELM

Student Council 3; Tri-Hi-Y 2,3,4; Pep Club 1,2,3,4; F.N.A. 4; G.A.A. 1,2,3; Senior Play 4, Advertising Committee; Junior Play 3; Choir 3,4; Petosegan Staff 4; Ski Team 2,4.

GARY DEAN WILLIAMS**MARCIA JEAN WOODRUFF**

Student Council 1; Tri-Hi-Y 2,3,4; Pep Club 1,2, Secretary, 3,4, Vice-President; Sub-Deb Club 1,2,3, Secretary; G.A.A. 1,2; Choir 3,4; Band 1,2,3,4; Sextette 2,3,4; National Honor Society 3,4, Secretary; Homecoming Court 4; Glee Club 1,2.

DORA ANN WORMELL

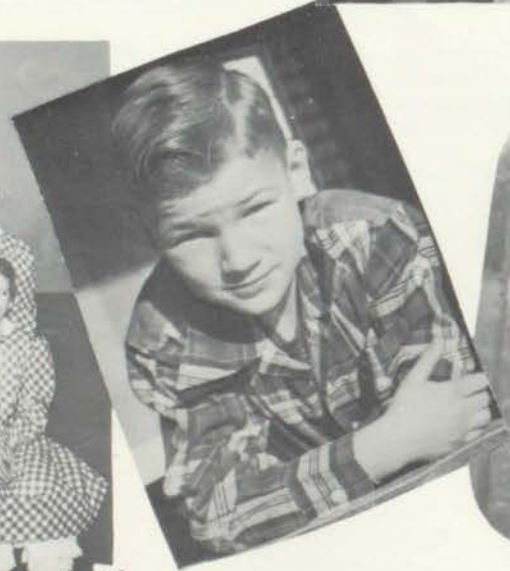
F.H.A. 1,2; Choir 2,3; Glee Club 1.

ERNEST FLOYD WURST

Football 1.

CAROL SUE YAICH

Tri-Hi-Y 2,3; Dramatics 2,3,4; Ink Slingers 2,3,4.





Underhands

Juniors

As Juniors, the future seemed to be drawing nearer. We still felt gay and carefree, but our laughter became much more sensitive.

We worked hard with the Junior play, Junior-Senior banquet and our J-Hop. We valued the experiences we had while working together.

It seemed we waited so long to reach up for this next step, but now it is before us and we are Seniors.



President Frank McGeath
 Vice President Ed White
 Secretary-treasurer Doug Treloar



L. Bailey



E. Baker



M. Baker



G. Bare



A. Bayha



E. Bellmer



P. Bellmer



J. Blanchard



C. Boland



T. Boyer



D. Brasure



J. Brecheisen



A. Bricker



C. Brown



E. Burnet



I. Call



J. Canell



D. Carpenter



F. Christoff



D. Cilke



P. Croff



K. Aho



E. Angevine



K. Bacon



D. Crosser



A. Curry



D. Dell



M. Dittmar



J. Dudek



J. Duncan



D. Ecker



J. Ellenberger



L. Engler



N. Eppler



L. Everts



S. Everts



C. French



L. Furgeson



P. Garrett



S. Garthe



J. Garver



T. Glazier



B. Grams



A. Hall



D. Hamill



J. Hand



J. Hand



R. Hannon



J. Hansen



J. Hickman



M. Hooker



T. Hooker



B. Horniman



R. Horning



S. Houts



J. Howard



B. Hughey



S. Hughey



D. Jeffries



D. Johnson



S. Kalbfleisch



J. Kauzlarich



E. Keck



D. Kenoshmeg



M. Kilborn



E. Kiogema



R. Kiogima



R. Lashmit



J. LeGrand



I. Lilga



V. Luesing



M. Mayes



D. McCarthy



C. McCartney



M. McClellan



F. McGeath



P. Medley



C. Myers



P. Moon



G. Morford



M. Mulholland



W. Newberg



L. Padgett



J. Parel



D. Paulsen



J. Peck



N. Potts



J. Quade



R. Rhineberger



P. Rinock



E. Risk



D. Rosselit



C. Rowe



J. Sawyer



S. Schmidt



R. Shafer



L. Sheldon



P. Sikarskie



H. Smith



B. Spurgeon



B. Starmer



J. Stanley



T. Sutherland



J. Stow



R. Tillotson



D. Treloar



G. Tuesley



T. Walker



T. Walker



S. Ward



J. Wells



E. White



D. Witte



B. Woodward



E. Yahr





Sophomores

We feel just a little older now, but as sophomores we felt the world was full of fun and laughter and that it would never end for us as teen-agers. At the end of the rainbow was our goal and treasure of life. The ability to imagine and create was our joy.

The on-coming school years look big to us now, but we are full of vim and spirit and we are willing to forge ahead to further our goal.



President Ray Johnson
 Vice President Terry Ellis
 Secretary-treasurer David Dombroski



H. Angevine



C. Babcock



S. Bayha



L. Behling



B. Bellmer



B. Bodzick



A. Boyer



M. Broman



S. Buckmaster



B. Carls



D. Caron



K. Carpenter



R. Chase



J. Christopherson



J. Clark



W. Cook



M. Crago



P. Groff



W. Groff



W. Crouch



M. Dashner

Camera
 shy



D. Dell



J. Dittmar



D. Dombroski



G. Doyle



I. Drost



A. Edson



T. Ellis



C. Everts



D. Fettig



P. Fleshman



R. Glazier



J. Granger



B. Gratsch



J. Gustafson



G. Hand



T. Hayner



C. Heller



K. Herr



L. Hewitt



H. Hibbler



K. Howard



J. Hill



E. Hudson



J. Hull



R. Johnson



R. Kalbfisch



S. Kelly



L. Kilmer



T. Kilpatrick



S. Kirk



D. Kitchin



J. Kolinske



R. Ladd



K. Lambertson



G. Lawrie



J. Leroue



I. Hickman



P. Manthei



E. McCune



K. McCune



B. McKnight



D. McMillan



B. Meadows



K. Morris



K. Morris



D. Mundhenk



J. Ness



J. Noggle



B. Norris



E. Page



A. Parker



G. Peck



R. Perry



A. Pitman



D. Pollard



D. Pollard



M. Pray



R. Putman



T. Rigg



B. Rinock



R. Renwick



M. Reusch



L. Sarna



R. Schweigert



T. Schweigert



J. Shomin



M. Shomin



C. Siewert



D. Smith



J. Smith



R. Spencley



D. Stallings



G. Stark



S. Stevens



C. Stewart



G. Swadling



L. Sweaney



D. Taylor



C. Tousaine



W. Towns



T. Webster



B. Wells



K. Wilson



R. Witte





Freshmen

Every year a new and eager class encounters the same big step of advancement in learning. When we left the seventh and eighth grades we were aware that something big was before us.

As Freshmen we put forth our efforts and endeavored to become individuals--though we trembled a little in the beginning. The year ending--we have confidence now and look forward with anticipation to our future years at P.H.S.



President John Woodruff
 Vice President Dave Hills
 Secretary-treasurer Gerald Peck



D. Adolphs



J. Allen



G. Baker



M. Baker



M. Behling



S. Behling



S. Biallas



B. Blum



M. Boening



M. Bowman



D. Bricker



B. Briggs



J. Budzynski



P. Burrows



P. Cook



R. Cooper



J. Davis



F. DeNard



K. Dielman



B. Dietz



J. Doherty



M. Drake



J. Duvernay



B. Ellenberger



E. Elliot



D. Ellis



E. Essig



K. Etcher



J. Faunce



T. Fettig



A. Fineout



M. Ford



S. Gibbard



G. Guillaume



B. Hankins



M. Hanna



J. Hibbler



M. Hickman



H. Hinkley



C. Hitchings



D. Hoover



B. Horniman



J. Howard



D. Hunt



L. Jensen



S. Jewitt



B. Johnson



C. Johnson



K. Johnson



H. Keck



T. Kiebel



R. Kilmer



D. Kinert



D. Kiogima



J. Kiogima



J. Koehler



M. Krauser



S. Lambertson



J. Leismer



C. Lovelace



M. Luebke



J. Manning



D. Massey



D. Mathews



J. Matz



J. Matz



J. McClellan



A. McWatters



A. Merrill



T. Mulholland



D. Mummert



R. Norris



G. Olsen



T. Parsons



C. Paxton



G. Peck



J. Peck



J. Pletzer



B. Reber



J. Rowe



C. Satmary



G. Sheldon



J. Smith



W. Stallings



L. Starmer



L. Stebe



M. Stevens



M. Titus



R. Tousain



M. Ulrich



T. Watts



B. Wilde



G. Wilhelm



J. Woodruff



T. Wormell



D. Wurst



B. Yaich



A. Dudek



B. Barnum



B. Chapin



S. Dennis



S. Eddy



B. Ford



D. Hills



J. Keller



E. Lawson



R. Phillips



S. Sherk



J. Smith



B. Southwood



E. Switzer



E. Veurink

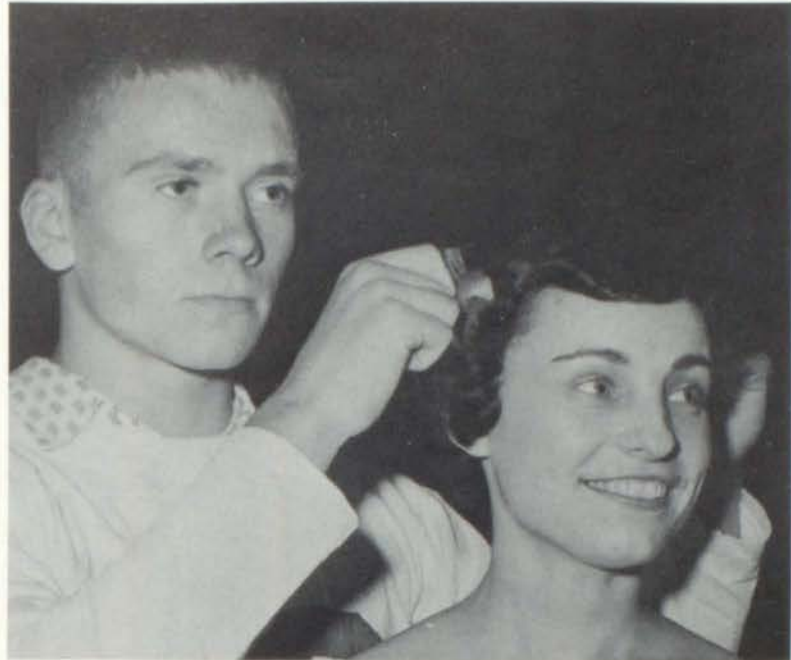


B. Born



Homecoming

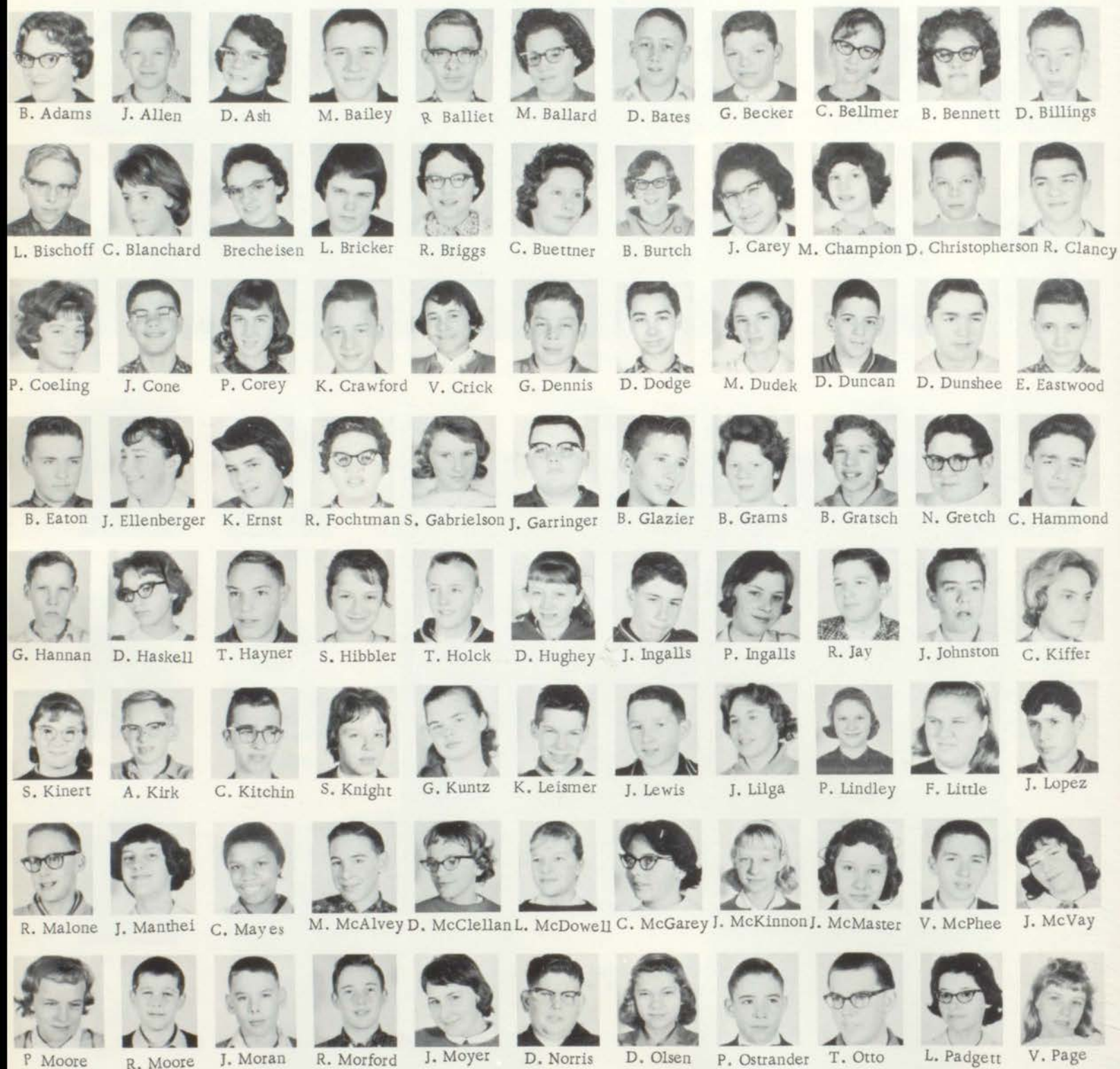
Jim Titus crowning Homecoming Queen Glenda Rosevear.



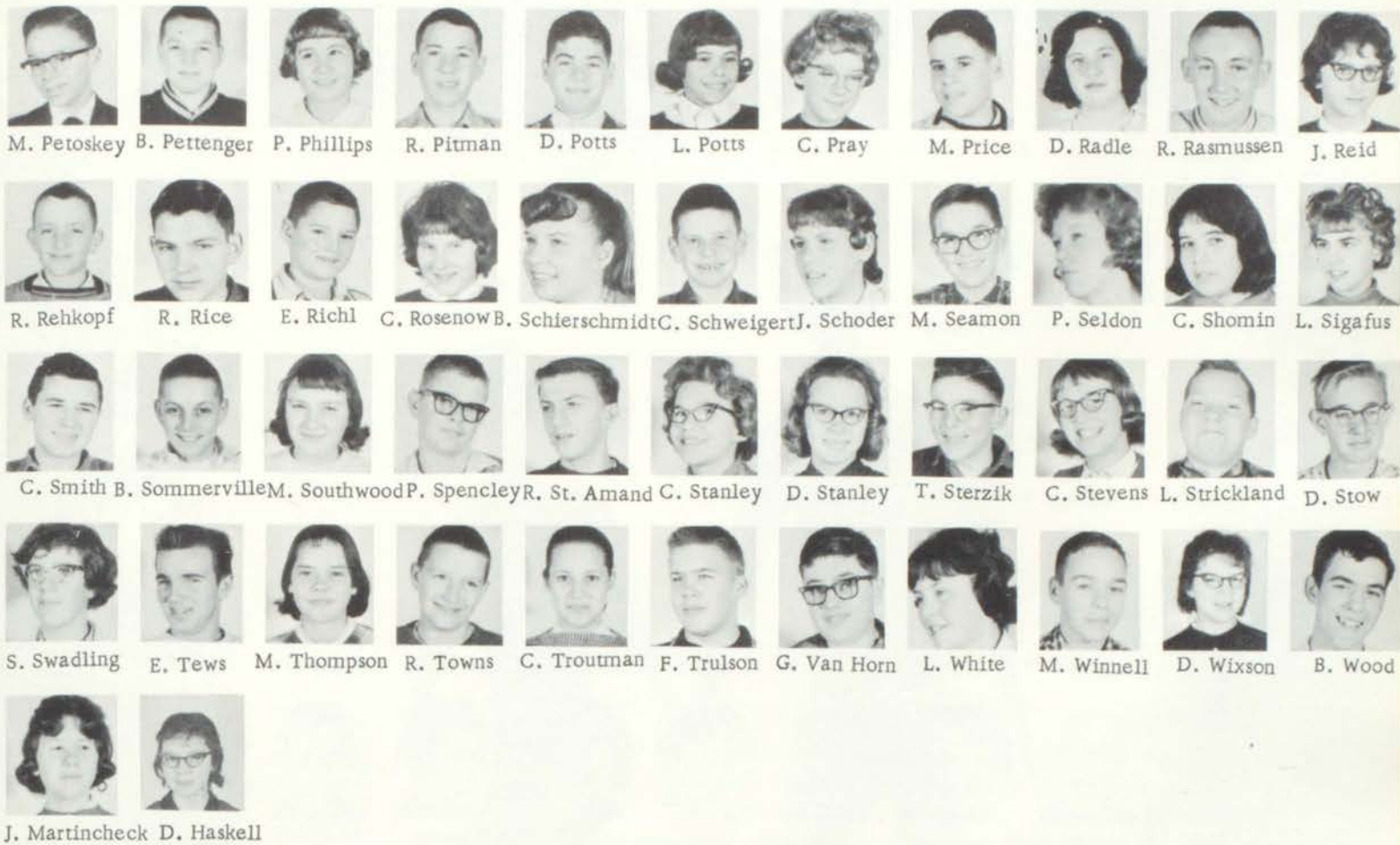
L to R: Court: Lynette McMaster, Marcia Woodruff,
Queen Glenda Rosevear, Sherrie Groff, Betty Reid.

Eighth Grade

President Mike Winnell
 Vice President Danny Bates
 Secretary-treasurer Sally Knight



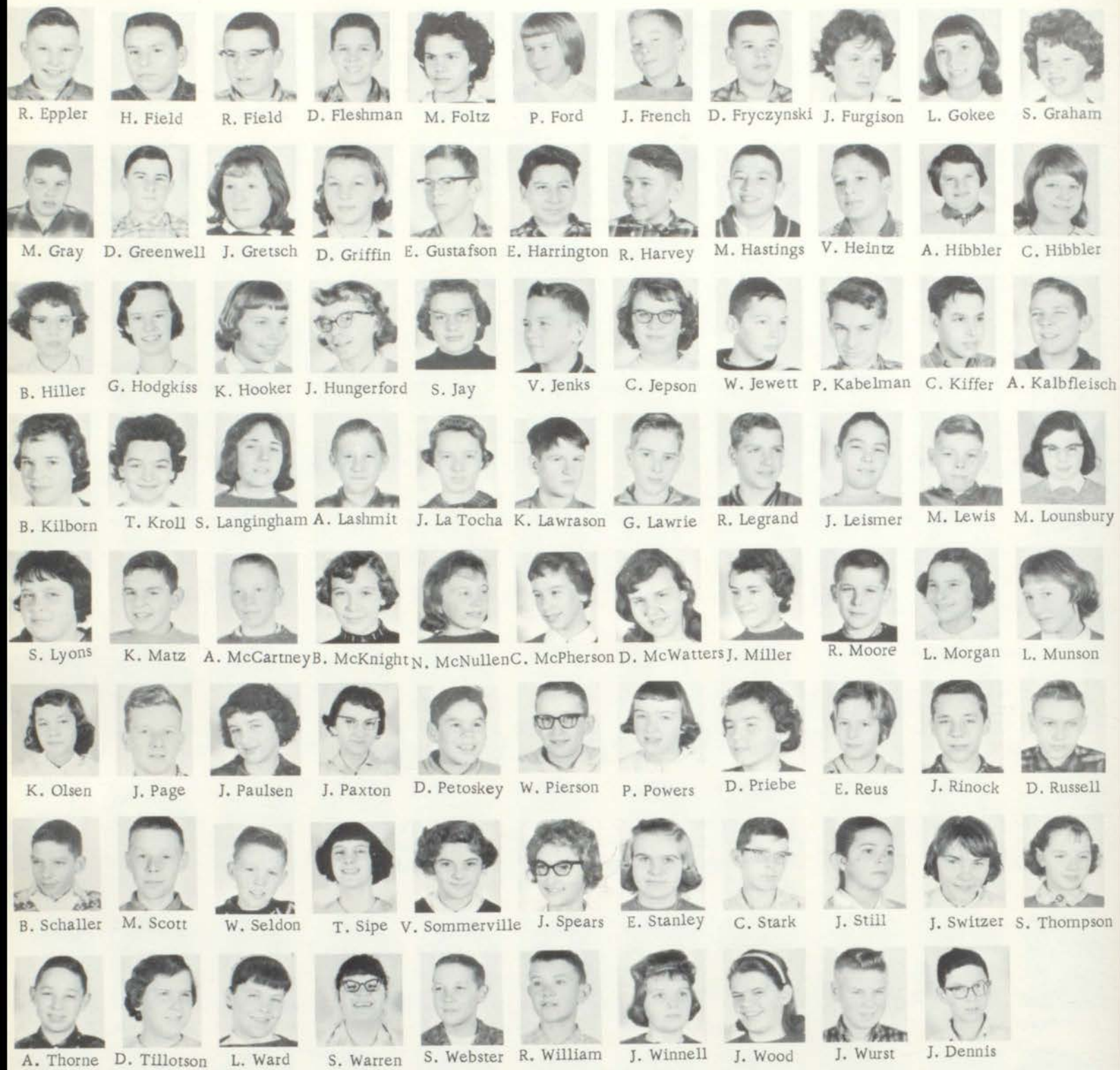
B. Adams J. Allen D. Ash M. Bailey R. Balliet M. Ballard D. Bates G. Becker C. Bellmer B. Bennett D. Billings
 L. Bischoff C. Blanchard Brecheisen L. Bricker R. Briggs C. Buettner B. Burtch J. Garey M. Champion D. Christopherson R. Clancy
 P. Coeling J. Cone P. Corey K. Crawford V. Crick G. Dennis D. Dodge M. Dudek D. Duncan D. Dunshee E. Eastwood
 B. Eaton J. Ellenberger K. Ernst R. Fochtman S. Gabrielson J. Garringer B. Glazier B. Grams B. Gratsch N. Gretch C. Hammond
 G. Hannan D. Haskell T. Hayner S. Hibbler T. Holck D. Hughey J. Ingalls P. Ingalls R. Jay J. Johnston C. Kiffer
 S. Kinert A. Kirk C. Kitchin S. Knight G. Kuntz K. Leisner J. Lewis J. Lilga P. Lindley F. Little J. Lopez
 R. Malone J. Manthei C. Mayes M. McAlvey D. McClellan L. McDowell C. McGarey J. McKinnon J. McMaster V. McPhee J. McVay
 P. Moore R. Moore J. Moran R. Morford J. Moyer D. Norris D. Olsen P. Ostrander T. Otto L. Padgett V. Page



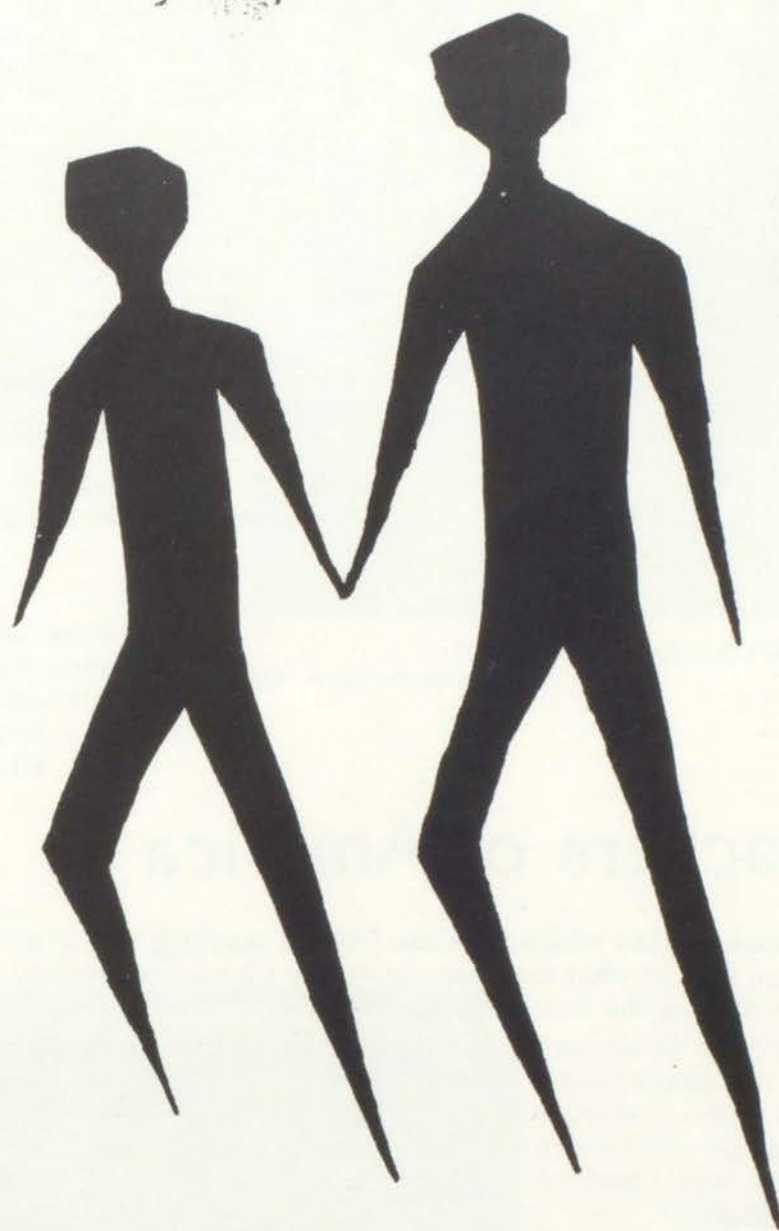
Seventh Grade

President Steve Webster
 Vice President Meg Elliot
 Secretary-treasurer Calvin Kiffer





R. Eppler H. Field R. Field D. Fleshman M. Foltz P. Ford J. French D. Fryczynski J. Furgison L. Gokee S. Graham
 M. Gray D. Greenwell J. Gretsche D. Griffin E. Gustafson E. Harrington R. Harvey M. Hastings V. Heintz A. Hibbler C. Hibbler
 B. Hiller G. Hodgkiss K. Hooker J. Hungerford S. Jay V. Jenks C. Jepson W. Jewett P. Kabelman C. Kiffer A. Kalbfleisch
 B. Kilborn T. Kroll S. Langingham A. Lashmit J. La Tocha K. Lawrason G. Lawrie R. Legrand J. Leismer M. Lewis M. Lounsbury
 S. Lyons K. Matz A. McCartney B. McKnight N. McNullen C. McPherson D. McWatters J. Miller R. Moore L. Morgan L. Munson
 K. Olsen J. Page J. Paulsen J. Paxton D. Petoskey W. Pierson P. Powers D. Priebe E. Reus J. Rinock D. Russell
 B. Schaller M. Scott W. Seldon T. Sipe V. Sommerville J. Spears E. Stanley C. Stark J. Still J. Switzer S. Thompson
 A. Thorne D. Tillotson L. Ward S. Warren S. Webster R. William J. Winnell J. Wood J. Wurst J. Dennis



Activities

Future Nurses of America



Front Row: R. Witte, M. Hooker, A. Curry, J. Kilmer, J. Wells, A. Bayha, Mrs. Cessar.
Back Row: J. Compton, J. Bodnick, J. Duncan, J. Wilhelm, B. Garthe, J. Gustafson, J. Nogle, L. Baker, M. Spencer, L. Sheldon.

President- Jean Sikarskie
Secretary-Treasurer- Arlene Bayha
Assistant- Marla Hooker
Advisor- Mrs. Cessar
Mrs. Blance

Future Teachers of America

Purpose- To interest more students in the field of teaching and to give them an idea of what teaching covers by classroom visitation and by helping the teachers.

President- John Meyer
Vice-President- Paula Sikarskie
Secretary- Pam Moon
Treasurer- Judy Blanchard
Historian- Jane Wells
Publicity- Kirsten Aho
Advisor- Mrs. Titus



Front Row: J. Blanchard, P. Sikarskie, P. Moon, J. Meyer, K. Aho, J. Wells, C. Heller. Second Row: Mrs. Titus, E. Kiogima, J. Sawyer, S. Kirk, B. Blum, A. Pitman, Mrs. Crosser. Back Row: R. Johnson, M. Mayes, C. Rowe, B. Streeter, J. Titus, T. Reber.

Yearbook Staff



L to R: J. Sweany; J. Matz; A. Gillespie; A. Sehr; J. Sikarskie; B. Garthe; B. McKinnon.

Editor Ann Gillespie
 Co-Editor Alexa Sehr
 Advisor Mrs. Howard



L to R: B. Miller; F. Notestine; J. Wilhelm; K. Luebke; L. McMaster; T. McCutcheon.

Pep Club



President- Glenda Rosevear
 Vice-President- Marcia Woodruff
 Secretary- Jane Wells
 Treasurer- Lynnet McMaster
 Advisor- Mrs. Price
 Mrs. Townsend
 Purpose- To promote school spirit and
 good sportsmanship among the
 student body.

Front row: T. Duncan, M. Smith, M. Woodruff, G. Rosevear, L. McMaster, J. Wells, P. Sikarskie. Second row: B. Born, S. Croff, B. Reid, S. Hanna, J. Kiffer, A. Bayha, K. Schaller, D. Adolphs, S. Bayha. Third row: J. Wilhelm, L. St. Amand, J. Matz, W. Shomin, J. Meyer, N. Stringer, J. Sweany, L. Gibbard, C. Heller.

G.A.A.



Front row: M. Luebke, K. Wilson, T. Mulholland, R. Norris, S. Lambertson, L. Stebe, C. Johnson, S. Johnson, D. Kiogima. Second row: D. Kughman, M. Kilborn, D. Paulson, M. Mayes, J. Dudek, D. Mundhenk, J. Canell, Third row: Miss Richwine, J. Kilmer, E. Yahr, J. Blanchard, B. Spurgeon, D. Kenoshmeg, E. Kiogima.

President- Mary Mayes
Vice-President- Diane Paulson
Secretary- Dawn Mundhenk

Treasurer- Melinda Kilborn
Student Manager- Jane Dudek
Advisor- Miss Richwine



National Honor Society



Honor Society

Front row: B. Garthe, M. Schulz, J. Kiffer, J. Titus, Mrs. Inglis, G. Hood, M. Woodruff, K. Granger, S. Smith. Back row: B. Burns, L. Gibbard, A. Gillespie, T. Reber, J. Matz, J. Meyer, B. Reid, J. Sikarskie, M. Smith, H. Stolt.

National Honor Society

President Jim Titus
Vice-President . . . Grant Hood
Secretary Marcia Woodruff
Advisor Mrs. Inglis

Purpose: To maintain and establish high standards of scholarship, leadership, character, and service.

Hi-Y



Front row: T. McCutcheon, H. Hamill, D. Hewitt, D. Jones, D. Hamill, S. Garthe, B. Perry. Second row: D. Crosser, V. Renwick, B. Starmer, B. Smith, D. Dombroski, D. Treloar, F. McGeath.



Front row: G. Laughlin, D. Buckstiegel, I. Potts. Back row: B. Miller, G. Hood, J. Meyer, B. Streeter, M. Parsons.

- President Grant Hood
- Vice-President . . . Gordon Laughlin
- Secretary Bob Starmer
- Treasurer Varn Renwick
- Advisors Mr. Quade
Mr. Crosser

Purpose: To create, maintain, and extend throughout the home, school, and community, high standards of Christian character.

Tri-Hi-Y



Front row: Mrs. Sikarskie, B. Reid, J. Blanchard, J. Matz, T. Reber, M. Hooker, Mrs. Walters. Second row: S. Croff, S. Hanna, L. McMaster, G. Rosevear, J. Wilhelm, M. Woodruff, L. Gibbard. Back row: Gillespie, M. Smith, B. Garthe, J. Sweany, S. Smith.



Front row: W. Newberg, J. Kauzlarich, P. Moon, C. Rowe, C. McCartney, K. Aho, A. Bayha. Second row: I. Lilga, J. Christopherson, S. Stevens, K. McCune, L. Sweany, L. Hewitt, S. Bayha, D. Johnson. Third row: M. Pray, S. Buckmaster, R. Renwick, G. Lawrie, M. Reusch, M. Crago, S. Kelly, D. Mundhenk.

- President Jean Matz
- Vice-President Bette Ried
- Secretary Marla Hooker
- Treasurer Terry Reber
- Chaplain Judy Blanchard
- Advisors Mrs. Sikarskie
Mrs. Walters

Purpose: To promote, maintain, and extend throughout the home, school, and community, high standards of Christian character.

Hi-Light Staff



Front row: J. Kochler, M. Hanna, E. White, V. Knoppke, C. Della Pietra, M. Stevens, M. Smith. Second row: I. Lilga, D. Johnson, M. Mayes, M. Kilborn, C. McCartney, D. Hewitt, J. Leismer. Third row: N. Stringer, S. Garthe, F. Notestine, M. Krauser, I. Call, A. Sehr, A. Edson. Fourth row: C. Rowe, E. Yahr, S. Kirk, T. Mulholland, A. Call, G. Hodgkiss, B. Bellmer, J. Shomin, A. Hall.

Editor- Melinda Kilborn
Page 1- Celia McCartney
Page 2- Ingrid Lilga
Page 3- Mary Mayes
Page 4- Diane Johnson
Page 5- John Leismer
Page 6- Dave Hewitt
Advisor- Mrs. Vratanina



Mrs. Vratanina, Advisor

Inkslingers



FRONT ROW: N. Gratsch, S. Garthe, J. Titus, B. Smith. SECOND ROW: C. Stevens, J. Peck, S. Jewitt, M. Drake. THIRD ROW: G. Lawrie, K. McCune, M. Pray, E. McCune. FOURTH ROW: J. Smith, C. Yaich, J. Granger, K. Cadwallader.

President- Melinda Kilborn
 Vice-President- Judy Granger
 Secretary-Treasurer- Katy McCune
 Program Chairmen- Mary Jo Pray
 Cherrie Stevens

Advisor- Mrs. Thompson
 Purpose- To encourage in Petoskey High School the use of creative ability to increase a realization of our responsibilities in developing all creative abilities, and to foster the development of leadership in the furthering of all creative enterprises.



Front row: M. Dittmar, P. Fleshman, K. Herr, I. Lilga, P. Rinock, S. Kirk, C. Everts. Back row: E. Switzer, J. Kolinski, K. Lambertson, T. Mulholland, A. Pitman, C. Barnum, M. Broman, K. Schaller, R. Renwick.

Dramatics Club



FRONT ROW: D. Mundheck, M. Drake, J. Doe, D. Carpenter, K. Schaller, J. Noggle, B. Johnson, J. Smith, J. Shomin, D. Kitchin. SECOND ROW: M. Stevens, K. Herr, M. Bowman, C. Morris, R. Witte, K. Wilson, K. Dielman. THIRD ROW: D. Pollard, W. Towns, D. Dell, F. Notestine, C. Everts, C. Yaich, A. Pitman, T. Mulholland.

President Karen Schaller
Vice-President . . . Dorr Carpenter
Secretary-Treas. . . Julie Noggle
Advisor Mrs. Becker

Purpose: To create an interest in the
Dramatic Arts among the stu-
dent body.

Future Homemakers of America



Front row: M. Stevens, J. Matz, D. Adolphs, B. Born, J. Faunce, M. Ford, D. Bricker.
 Second row: B. Essig, P. Coeling, S. Behling, H. Hinkley. Third row: R. Norris,
 J. Hibbler, M. Rosselit, M. Luebke, M. Broman,



FRONT ROW: C. Johnson, J. Matz, B. Gretch, T. Reber, E. Yahr, D. Brasure,
 K. HERR. SECOND ROW: K. Behling, J. Keck, B. Meadow, E. Hudson, M. Bow-
 man, I. Hickman, B. Bellmer. THIRD ROW: E. Kiogima, A. Hall, Mrs. Miller,
 Mrs. Buettner, E. Allen, J. Shomin, D. Caron.

President- Terry Reber
 Vice-President- Barb Gratch
 Secretary- Elaine Yahr
 Treasurer- Diane

Future Farmers of America

President- Doug Hickman
Vice-President- Jerry Johnston
Secretary- Jerry Hickman
Treasurer- John Stowe
Reporter- Jim Leusing
Sentinel- Don Hoffman
Parliamentarian- Brian Becker

Purpose- To practice brotherhood, honor, rural opportunities, and develop those qualities of leadership which future farmers should possess.



Advisor- Mr. Emshwiler



First row: J. Hand, O. Kalbfleisch, B. Becker, J. Leusing, J. Hand, M. Baker, J. Hickman. Second row: L. Furgeson, R. Hannon, T. Glazier, J. Stow, D. Hickman, T. Walker, T. Walker.



First row: P. Croff, R. Furgeson, R. Glazier, R. Spencley, C. Stewart, R. Kalbfleisch, J. Ness. Second row: L. Kilmer, G. Swadling, G. Schoder, C. Babcock, W. Crouch.



First row: J. Keller, J. Allen, R. Wanamaker, D. Ellis, P. Burrows, B. Ford, B. Croff. Second row: A. Merrill, G. Olsen, B. Ellenberger, H. Keck, M. Boening.

Student Council



Front row: D. Hills, C. Brown, R. Renwick, S. Buckmaster, B. Johnson, J. Wells, T. Parsons.
Second row: D. Buckstiegel, R. Schafer, T. Hayner, B. Schweigert, J. Reid, D. Adolphs, E. McCune, J. Hand. Third row: S. Webster, P. Ford, L. Morgan, J. Lilga, J. Leismer, D. Fleshman.

President Meryl Smith
Vice-President . . . Brook Smith
Secretary-Treas. . . Tom Sutherland
Advisor Mr. Aho

Purpose: To promote a harmonious relationship between faculty, and students. Through it, student's opinions, interests, and desires may be known to the faculty.



L to R: Tom Sutherland, Meryl Smith, Brook Smith.

Varsity Club



Front row: A. Dennis, B. Smith, J. Meyer, D. Jones, J. Titus, W. Miller, T. Smart. Second row: J. Duree, R. Johnson, D. Huczek, H. Stolt, M. Schulz. Third row: Coach Fowler, Coach Clark, Coach White.



Front row: F. McGeath, T. Walker, D. Cilke, J. Hand, J. Brecheisen, S. Garthe, G. Bare. Back row: H. Smith, J. Stanley, T. Walker, T. Hooker, E. White, J. Hickman, D. Treloar, J. Still, T. Sutherland.

President- Tom Sutherland
 Secretary- Wayne Miller
 Treasurer- George Bare
 Sergeant-at-arms- Brook Smith
 Advisors- Mr. Clark
 Mr. White
 Mr. Fowler
 Mr. Splan

Purpose- To promote good sportsmanship, clean living, better school spirit, and a good scholastic record among athletes.

Plays



Scenes from.....CHEAPER BY THE DOZEN



Scenes from.....SEVENTEENTH SUMMER



MUSIC

C h o i r



Front row: S. Stevens, L. Gibbard, L. McMaster, K. McCune, B. Spurgeon, M. McClellan. Second row: M. Pray, J. Wilhelm, K. Schaller, G. Rosevear, M. Reusch, B. Garthe. Third row: J. Blanchard, P. Medley, R. Malloy, E. Yahr, C. Rowe, F. Notestine, J. Matz. Fourth row: B. Starmer, H. Stolt, J. Smith, D. Treloar, J. Titus, T. Smart, B. Streeter, D. Cilke, D. Smith, D. Jones.



Front row: C. Brown, K. Herr, E. Bellmer, R. Witte, E. Burnett, C. Barnum, Second row: K. Aho, L. Garver, M. Smith, M. Woodruff, D. Brasure, A. Bayha, R. Sommer. Third row: K. Cadwallader, C. Della Pietra, E. McCune, J. Peck, R. Lashmit, Mr. Moyer. Fourth row: R. Johnson, D. Smith, V. Renwick, S. Garthe, T. Webster, J. Garver, D. Pollard.

9th Grade Glee Club



Front row: J. Manning, R. Barnum, G. Guillaume, T. Watts, B. Ford, B. Briggs, J. McClellan. Second row: S. Lambertson, D. Bricker, H. Hinkley, A. McWatters, K. Etcher, S. Behling, G. Baker, L. Stebe, D. Adolphs. Third row: L. Starmer, A. Fineout, B. Blum, M. Titus, S. Dennis, S. Johnson, M. Stevens, T. Wormell, E. Veurink, J. Davis, E. Lawson, M. Rosselit. Fourth row: M. Luebke, A. Dudek, S. Jewitt, J. Peck, M. Baker, J. Smith, J. Smith, B. Johnson, J. Faunce, J. Pletzer, C. Hitchings, Mr. Moyer.

Girl's Glee Club



FRONT ROW: S. Bayha, K. Howard, B. Meadows, M. Broman, R. Witte, C. Barnum, B. Spurgeon, R. Sommer. SECOND ROW: C. French, L. Hickman, J. Keck, N. Eppler, L. Hewitt, P. Medley, J. Noggle, K. Herr. THIRD ROW: J. Parker, H. Angevine, J. Kilmer, K. Warren, F. Notestine, E. Yahr, K. Cadwallader, G. Lawrie, L. Graver, Mr. Moyer.

Sextette



L to R: R. Sommer, C. Barnum, L. Gibbard, C. Rowe, Mr. Moyer, K. Cadwallader, C. Brown, K. Herr, K. Schaller.

Octette



L to R: D. Treloar, S. Garthe, H. Stolt, D. Pollard, Mr. Moyer, J. Meyer, D. Smith, D. Pollard, R. Johnson.

C o n c e r t



Concert Band

Front row: D. Dombroski, J. Sikarskie, M. Woodruff, T. Reber, B. Garthe, J. Peck, J. Wells, S. Hanna, Sweany, M. Smith, S. Croff. Third row: A. Gillespie, M. Parsons, J. Titus, J. Quade, R. Schwiegert, C. McCartney, P. Moon, M. Hooker, A. Edson, D. Carpenter, L. Garver, G. Laughlin, J. Sweany. Fifth row:

B a n d



L. Gibbard. Second row: K. Aho, E. Risk, T. Hooker, G. Morford, H. Smith, K. Carpenter, J. Dittmar, L. F. McGeath, D. Treloar, S. Garthe, L. Hewitt, R. Renwick, D. Mundhenk. Fourth row: V. Renwick, G. Bare, B. McKnight, G. Hood, W. Newberg, J. Garver, R. Tillotson, E. White, J. Matz, L. Engler, T. Smart.

Dance Bands



Front Row: J. Sikarskie, S. Hanna, J. Matz, G. Laughlin, L. Gibbard. Second Row: R. Renwick, A. Gillespie, M. Parsons, G. Hood, W. Newberg. Back Row: K. Aho, V. Renwick.



Front Row: D. Dombroski, H. Smith, Mr. Smith, E. Risk, D. Carpenter. Second Row: L. Hewitt, R. Schweigert, J. Quade, T. Smart, B. McKnight. Back Row: A. Edson, R. Tillotson, C. McCartney.

Seventh Grade Band



Front row: B. Jewitt, J. Miller, M. Bowling, J. Spears, L. Munson, J. Winnell, B. Kilborn, S. Thompson, N. McMullen, M. Elliott, S. Laningham, Second row: L. Douglas, R. Harvey, C. Drake, D. Atheran, E. Reus, J. Paxton, J. Paulsen, J. Switzer, K. Laurson, P. Kabelmon, S. Webster, D. Colwell, F. Dielman, B. Pierson, J. Wurst, B. Seldon. Third row: C. Stark, G. Lawrie, T. Bischoff, J. Hangerford, P. Carter, Y. Champion, P. Powers, D. Tillotson, V. Heintz, L. Gokee, K. Matz, Back row: M. Hastings, A. McCartney, B. Schaller, D. Russell, J. French, E. Gustafson, M. Gray, S. Detcher, K. Hooker, R. Page, C. Kiffer.

Eighth Grade Band

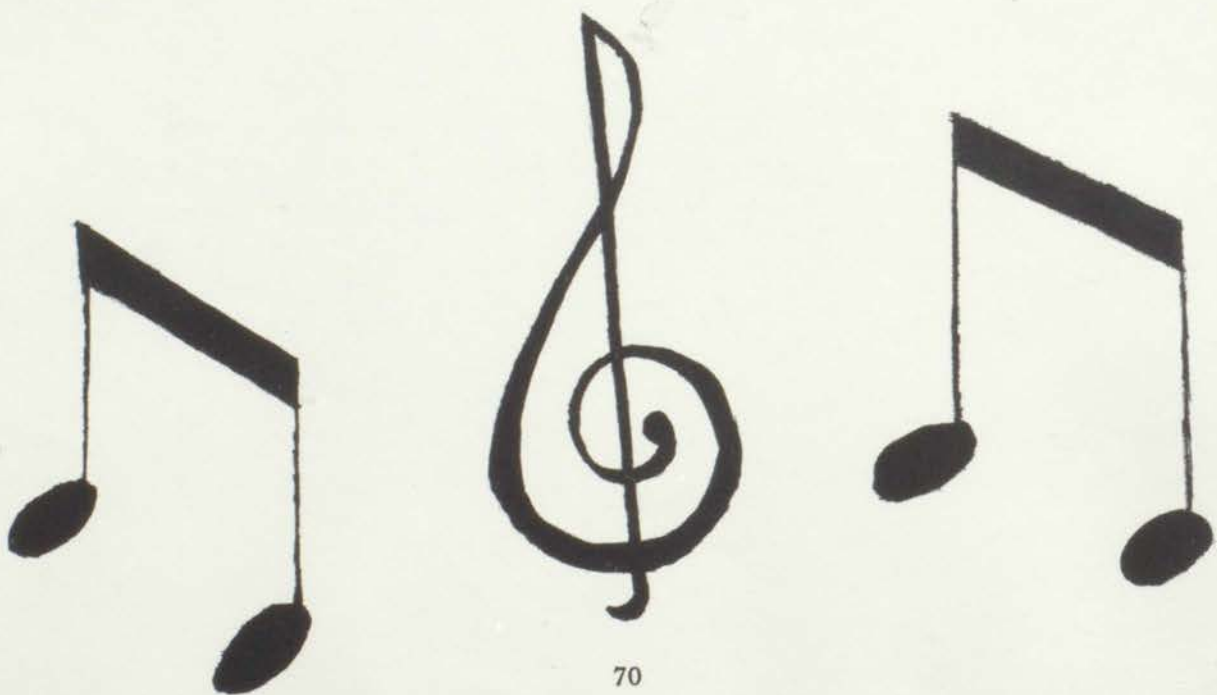


Front Row: N. Gretch, B. Schwigert, C. McGary, M. Dudek, D. McClellan, S. Gabrielson, P. Lindley, P. Philips, C. Blanchard, J. Moyer, C. Trautman, Second Row: Mr. Smith, B. Benett, J. McMaster, G. Becker, D. Malone, P. Brecheisen, B. Recroft, B. Becker, J. Garinger, G. Dennis, M. Ballard. Back Row: M. Champion, D. Norris, K. Ernst, D. Lauerson, P. Ostrander, R. Pitman, D. Potts, B. Burtch, K. Lismer, B. Grams.

Ninth Grade Band



Front row: J. Rowe, B. Briggs, L. Jensen, T. Parsons, H. Hinkley, C. Samary, J. Peltzer, E. Essig, M. Drake, B. Reber. Second Row: J. McClellan, B. Wilde, D. Wurst, T. Watts, I. Drost, R. Phillips, G. Sheldon, B. Perry, H. Krieg, M. Hickman, C. Hitchings, L. Starmer. Back row: G. Snyder, A. Fineout, B. Blum, Mr. Smith, G. Peck, J. Manning, T. Mulholland, C. Paxton, G. Guillaume, B. Barnum.





Sports

Varsity Cheerleaders



L to R: Thora Duncan, Glenda Rosevear, Arlene Bayha, Paula Sikarskie

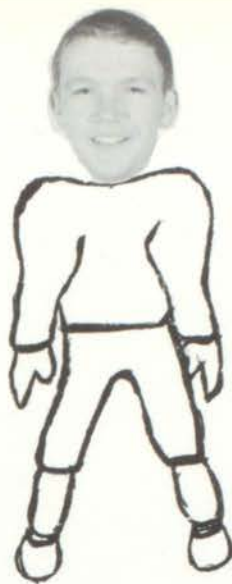
J.V. Cheerleaders



L to R: Brenda Born, Doreen Adolphs, Sandy Bayha, Carolyn Heller



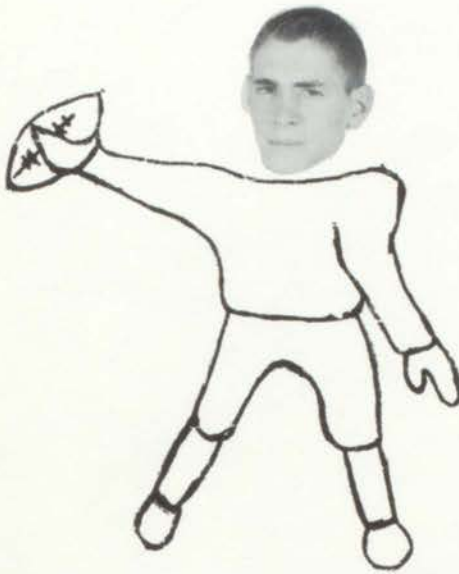
Butch Christoff
C., Wt. 216, Junior



Tom Walker
H.B., Wt. 141, Junior



Dorr Carpenter
H. B., Wt. 150, Junior



Hugh Smith
E., Wt. 155, Junior



Frank McGeath
H.B., Wt. 150, Junior



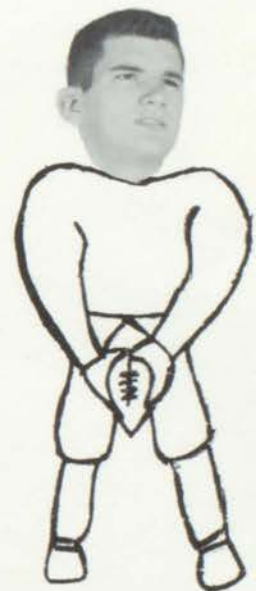
Ted Hooker
C., Wt. 191, Junior



Tim Walker
H.B., Wt. 135, Junior



John Ellenburger
G., Wt. 147, Junior



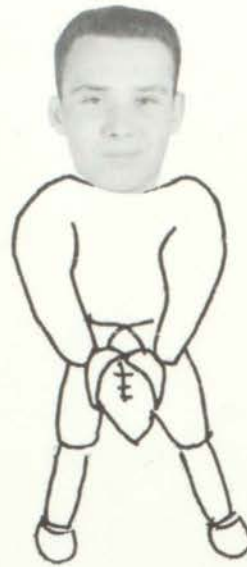
Duane Cilke
E., Wt. 170, Junior



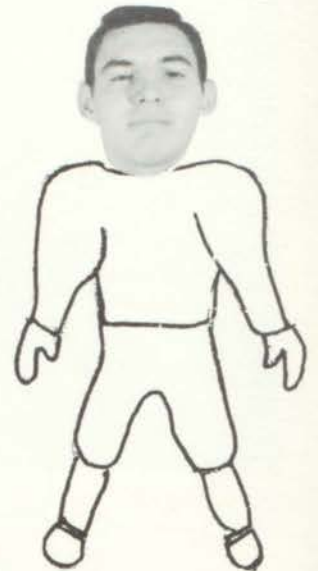
Jim Titus
E., Wt. 170, Senior
Co-Captain



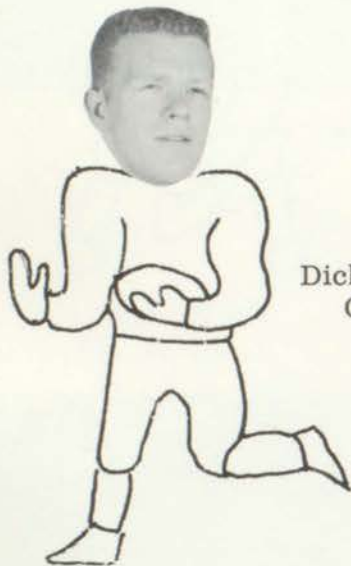
Brook Smith
E., Wt. 155, Senior
Co-Captain



Don Jones
T., Wt. 213, Senior



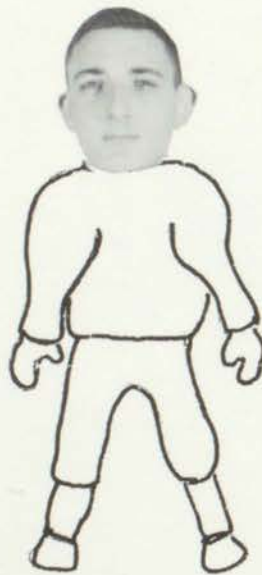
Jim Duree
T., Wt. 165, Senior



Dick Johnson
C., Wt. 165, Senior



Willard Shomin
H.B., Wt. 150, Senior



Harry Stolt
G., Wt. 150, Senior



Tom Gough
T., Wt. 190, Senior



Art Dennis
T., Wt. 180, Senior



John Meyer
T., Wt. 197, Senior



George Bare
F.B., Wt. 165, Junior



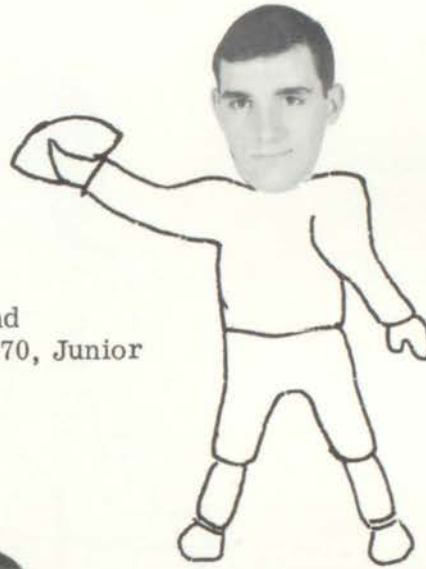
Joe Stanley
T., Wt. 155, Junior



Jerry Hickman
H.B., Wt. 147, Junior



Jerry Hand
H.B., Wt. 161, Sophomore



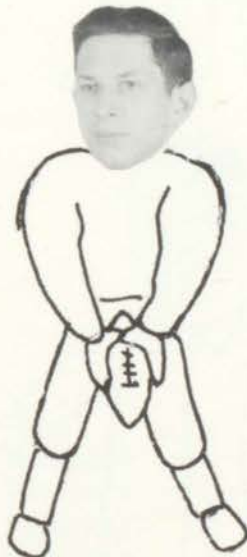
Tom Sutherland
Q.B., Wt. 170, Junior



Dave Huezek
G., Wt. 161, Senior



Bob Starmer
Q.B., Wt. 138, Junior



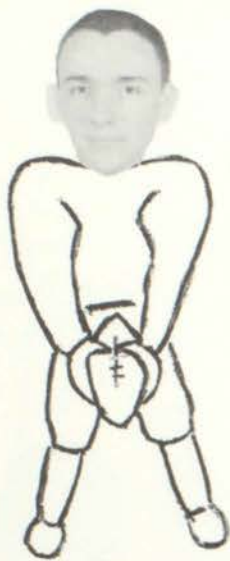
Wayne Miller
G., Wt. 145, Senior



Ray Johnson
E., Wt. 162, Junior



Jim Brecheisen
F.B., Wt. 160, Junior



Ed White
H.B., Wt. 162, Junior



Robert Wells
T., Wt. 180, Sophomore



Warren Towns
E., Wt. 170, Sophomore

Ron Tillotson
G., Wt. 145, Junior



Cecil Broman'
E., Wt. 140, Junior



Stuart Garthe
Student Manager, Junior



Mike Schulz
Student Manager, Senior



Doug Treloar
Statistician, Junior

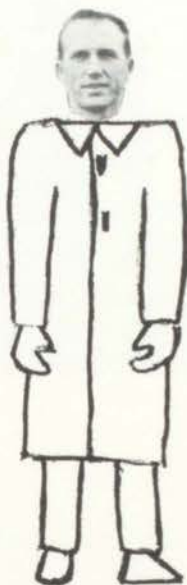
Football

Season of the Petoskey Northmen

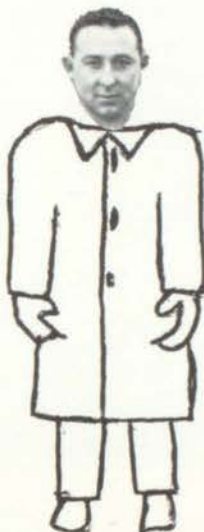
The 1960-1961 football team looked forward to a great season those first two weeks of practice. They started two weeks before school in temperatures of 80° and more. Coaches Fowler, White, Clark, and team began to be haunted with injuries. Due to these injuries the Northmen never found themselves at full strength.

Our first game with Manistee brought a disappointing 45 to 7 loss. The "Fighting Northmen" kept fighting as a unit even though plagued with injuries. They showed signs of improvement all through

the season and the replacements of the injured players filled the shoes to lead the Northmen to their two final victories. The seasons highlights were the downings of the Rogers City Hurons and the Cheboygan Chiefs. The Northmen fought all the way to bring home a 21-18 victory against the Hurons. Again against the Chiefs, the Northmen rallied to defeat Cheboygan with a 25-12 victory, this game rounding out the season with two victories and seven defeats.



BOB CLARK
Assistant Coach



JIM FOWLER
Head Coach



RON WHITE
Assistant Coach

Sept. 10	Blue	0	White	19
Sept. 17	Petoskey	7	Manistee	45
Sept. 23	Petoskey	6	Alcona	25
Sept. 30	Petoskey	0	Manistique	40
Oct. 7	Petoskey	6	Newberry	32
Oct. 14	Petoskey	18	Cadillac	32
Oct. 22	Petoskey	12	Ludington	20
Oct. 28	Petoskey	7	Traverse City	36
Nov. 4	Petoskey	21	Rogers City	18
Nov. 11	Petoskey	25	Cheboygan	12

Junior Varsity Football

In spite of only two wins, everyone was quite proud of our Little Northmen this year, because it was realized that they had worked so vigorously at their practices. Sometimes, though, the practices weren't very pleasant when the weather was so hot. After practicing in almost eighty degree weather, the cooler environment was welcomed.

All their games were very exciting—and rough as ever—but the Charlevoix game stands out as one of the toughest.

The J.V.'s worked well together as a team along with their appreciated coach, Coach Splan.

The J.V.'s put forth much effort this year and were very grateful for the large and enthusiastic crowds.

Everyone is proud of our Junior Varsity. Although they might not seem quite as important as our Varsity, they do play a very big part in our school program. They are important, because in the near future they will be able to add their talents to a part of a still greater team—the Varsity.

Games Played

Sept. 20	Cheboygan	there	22-6
Sept. 27	Boyne City	home	6-0
Oct. 4	Charlevoix	home	51-13
Oct. 11	Cheboygan	home	6-2*
Oct. 18	Boyne City	there	12-7
Oct. 25	Pellston	home	33-12*
Nov. 1	Charlevoix	there	26-14

*—Games won

Members of Junior Varsity Football Team

Paul Cook	John McKnight
Fred DeNard	Don McMillan
Ernest Dietz	David Matthews
David Dombroski	Alvin Merrill
John Duvernay	Dennis Mummert
Eric Elliott	Gerald Peck
Terry Ellis	Don Pollard
Terry Hayner	Richard Pitman
Harry Hibbler	John Smith
Harold Keck	Bert Southwood
Leon Kilmer	Carol Stewart
Roger Kilmer	George Swadling
John Krieg	Ray Wanamaker
Jim Leismer	Burt Wilde

Basketball



Back row:

Coach Clark

Ed White

F., Wt. 170, Ht. 5'11", Junior

Brook Smith

F., Wt. 165, Ht. 6', Senior

John Meyer

C., Wt. 180, Ht. 6'1", Senior

Duane Cilke

F., Wt. 170, Ht. 6', Junior

Nick Stringer

C., Wt. 160, Ht. 6'1", Senior

Jim Titus

F., Wt. 170, Ht. 5'11", Senior

Front row:

Bill Woodward

G., Wt. 135, Ht. 5'11", Junior

Willard Shomin

G., Wt. 155, Ht. 5'10", Senior

Dave McCarthy

G., Wt. 135, Ht. 5'9", Junior

Mike Dominic

G., Wt. 130, Ht. 5'7", Senior

Managers:

Frank McGeath

Mike Schulz

The 1960-61 basketball season was not as victorious as the Northmen had anticipated. Although they practiced feverishly, the odds just weren't with them. Coach Clark brought them to victory the first two games, but they were followed by losses pushing the team into depression. They fought hard and won a few more games. The game with Traverse City was a tie and went into overtime. The game ended with Traverse City one point ahead, a discouraging but exciting game.

Nov.	25	Petoskey	46	Boyne City	37
Dec.	3	Petoskey	40	Cadillac	33
Dec.	10	Petoskey	33	Alpena	59
Dec.	13	Petoskey	61	Cheboygan	52
Dec.	17	Petoskey	38	Manistee	56
Dec.	30	Petoskey	55	Charlevoix	52
Jan.	6	Petoskey	45	Traverse City	46
Jan.	14	Petoskey	35	Cadillac	43
Jan.	21	Petoskey	55	Rogers City	74
Jan.	28	Petoskey	33	Boyne City	60
Feb.	4	Petoskey	57	Cheboygan	64
Feb.	10	Petoskey	60	Traverse City	73
Feb.	17	Petoskey	55	Newberry	74
Feb.	21	Petoskey	55	Charlevoix	65
Feb.	25	Petoskey	66	Rogers City	45

J.V. Basketball



FRONT ROW: J. Hand, T. Sutherland, H. Smith, G. Bare, D. Treloar, T. Ellis, Coach White, SECOND ROW: J. Rowe, T. Webster, R. Johnson, R. Kilmer, G. Peck, J. Smith. THIRD ROW: T. Riggs, E. Page, D. McMillan, T. Schweigert.

This year the Little Northmen were in a slump for the former part of the season. Coach Ron White kept practice going and the Little Northmen recovered --- too late. The season over, the team came out with five wins and ten losses.

Ski Team

The 1961 Ski Team opened their season with a triangular meet with Petoskey St. Francis and Grayling at Grayling. The boys won the meet and the girls received a second. The second meet was at Walloon Hills with Cheboygan and Harbor Springs. The boys placed third while the girls were winning the race. Next came a triangular meet at Gaylord against Gaylord and Petoskey St. Francis. Meet number four was held at Harbor Springs. It was a dual meet between Cheboygan and Petoskey. The boys disqualified and the girls placed first. The State meet was next at Boyne City with the boys coming in sixth out of a field of sixteen teams. The girls placed fifth out of a field of fifteen teams.

Coach Howard and the ski team should be congratulated for doing such a fine job during the season.



Barb Burns, Sr.



Cleve Paxton, Fresh.



Rosemary Renwick, Soph.



Varn Renwick, Sr.



Meryl Smith, Sr.



Bill Streeter, Sr.
Manager



Bill Shorter, Sr.



Coach Howard



Tim Parsons, Fresh.



Wally Conley, Sr.



La Vaun Hewitt, Soph.



Karla Howard, Soph.



Susie Smith, Sr.



Dave Dombroski, Soph.



Jaci Wilhelm, Sr.



Susan Kelly, Soph.



Rod Phillips, Fresh.



Jo Ann Christopherson, Soph.



Tom Smart, Sr.

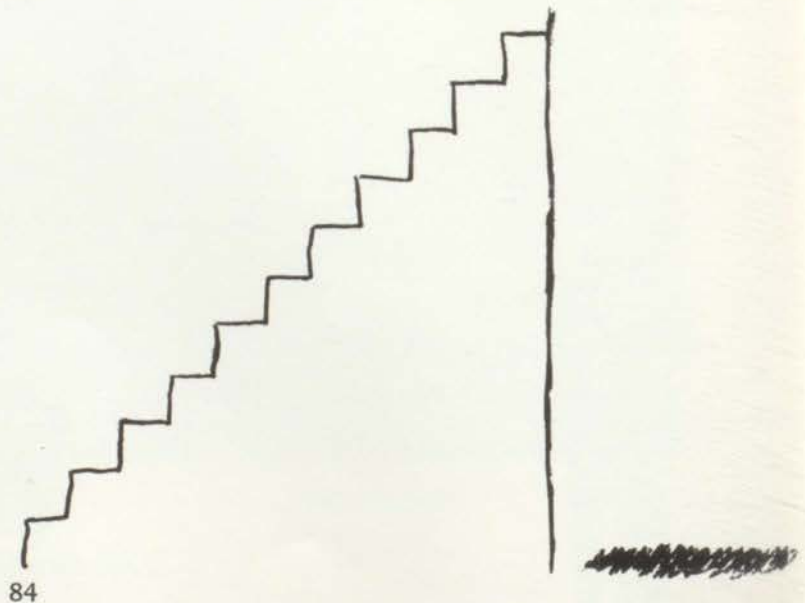


Irvin Potts, Sr.

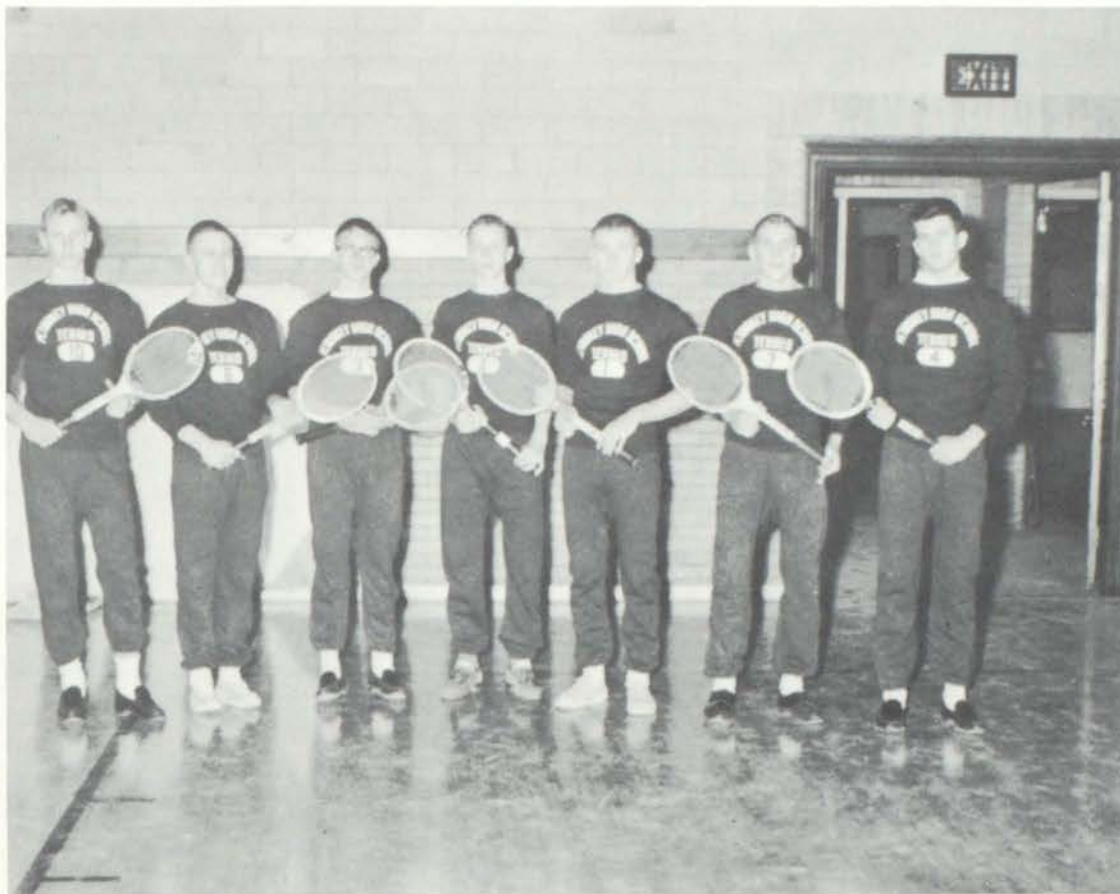
Track Team



Front Row: D. Kinert, J. Rowe, B. Ford, J. Doe, D. Mummert, C. Paxton, B. Wilde, J. Duvernay, J. Leismer, D. Hunt, W. Sifford. Second Row: R. Johnson, D. Dell, J. Stanlye, T. Walker, R. Tillotson, F. Denard, G. Bare, H. Stolt, T. Walker, V. Renwick, T. Sutherland, J. Woodruff. Back Row: Coach Splan, B. Wells, F. McGeath, J. Hand, E. White, W. Miller, J. Wilhelm, V. Knopke, P. Garret, J. Duree, J. Brecheisn, Coach Staubach.



Tennis Team



L. to R: B. Smith, M. Schulz, S. Garthe, D. Treloar, J. Titus, H. Smith, D. Cilke.



Coach Fowler



Golf Team



Front row: B. Streeter, T. Parsons, R. Tausian, D. Ellis, D. Hills, R. Schweigert, B. Perry, W. Towns, T. Boyer. Second row: Coach Clarck, M. Parsons, D. McCartney, A. Dennis, B. Christoff, J. Still, D. Huzek, W. Shomin, R. Engler, M. Mulholland.

