

1943

PETOSEGAN

WAR ISSUE



THE CLASS OF 1943 PRESENTS THE
FIRST WAR ISSUE OF THE PETOSEGAN,
PETOSKEY HIGH SCHOOL, PETOSKEY,
MICHIGAN. THIS PETOSEGAN WAS EDI-
TED AND PUBLISHED BY DOROTHY
BENJAMIN, EDITOR-IN-CHIEF, RUTH
OLSON, BUSINESS MANAGER, FRANCIS I.
McDOWELL, FACULTY ADVISER, AND
MEMBERS OF THE SENIOR CLASS. IT
WAS PRINTED BY C. E. GARVIN CO.

1943
PETOSEGAN
WAR ISSUE

PETOSKEY LIBRARY
CHIEF



MRS. ROSALIE A. STECH

WE DEDICATE THIS PETOSEGAN TO MRS.
STECH, WHOSE INTEREST AND AID IN OUR AC-
TIVITIES HAVE GIVEN US A PUSH IN THE RIGHT
DIRECTION.

PETOSEGAN PUBLIC LIBRARY



Tree, girl, book. Snapshot Contest--1st Prize. Third Prize. . . . Valerie. . . .



Waiting--or posing? . . . Second Prize. . . . Home from the sea. . . .



At once. . . . Sing Sing, Petoskey. . . . D.J.B. and Thistle. . . .



Jim, Sales Manager. . . Remember Miss Jewell? . . . Cameraman gets shot. . . .



3rd. row (Left to Right)—
 Frank S. Jacobs, B.S., M. A.
Science and Mathematics

Merrill F. Fink, A.B., M.A.
Social Studies and English

Robert Burton, B.E., B.I.
Manual Arts and Pre-Flight

2nd. row—
 Francis I. McDowell, A.B.
General Science-Social Science

Mrs. Burton Cole, A.B., M.A.
English, Latin and Dramatics

Arlene D. Van Ness, A.B.
History, Economic Geography

1st. row—
 Clifford Buckmaster, B.S.
*Bus. Methods, Mathematics,
 Physical Ed., Assistant Coach*

Doris E. Pettyjohn, B.S.
Home Economics

Grace W. Jessop
Opportunity Room

Nellie I. Beebe, B.A., M.A.
Latin, French and Spanish

Mrs. Dorothea Schlechte, B.S.
Biology

Kenneth E. Musson, B.S.
Apprenticeship Training

John W. Mitchell, B.S.M.
Music and String Instruments

W. M. Loveless, B.S.
Mathematics and Science

Rosalie A. Stech, A.B.
English and Dramatics

Eileen Ruetz, B.S.
Commercial Studies

Josephine Schilling, B.S.
Science and Mathematics

F. R. Johnson, B.A.
*English, Amer. Hist., Gov't.
 Physical Ed., Varsity Coach*

Janet L. Odmark, B.S.
Home Economics

Katherine S. Inglis, A.B.
Social Science and English

Not in Picture—
 Ola Gaumer, B.S.
Physical Education

H. C. Spitler, B.A., M.A.
Superintendent of Schools

Walter W. Haberaecker, B.M.
*Instrumental Music and
 H.S. Vocal*

Leonard Murray
Industrial Arts

Walter James MacMillan, B.S.
Physical Education and Civics

Frances Pailthorp
Art

Elaine P. Little, B.S.
Commercial Studies

T. Arthur Treloar
Industrial Arts

Lorna L. Betz, A.B.
Mathematics

Laura S. Reger, B.S.
Journalism and English

Doris Bailey
Junior High Subjects

Shirley Jewell, B.S.
Biology and General Science

SENIORS

1943

PETOSEGAN

WAR ISSUE

Gertrude Louise Baines

A Capella Choir, 4; Chorus, 1, 3, 4; Glee Club, 1, 2, 3, 4; Hi-Light, 4.

Rosella Baker

Cheboygan High School, 1, 2; Dramatics, 4; Glee Club, 3, 4; Hi-Light, 4; Home Ec. Club, 3, 4; Topper's Club, 4.



Charles M. Ballard

President, 2, 3, 4; Basketball Team, 1, 2, 3; Declamation, 1; Golf, 1; Football Team, 1, 2, 4; Glee Club, 2; Hi-Y, 2, 3, Sec'y, 4; Honor Society, 4; Student Council Pres., 2, 3, 4; Intramural, 4; Track, 2; Varsity Club, 2, 3, 4. Pep Club, 4.

Nancy Batcheller

A Capella Choir, 4; G. A. A., 1; Chorus, 2, 4; Glee Club, 1, 2; Hi-Light Staff, 4; Girl Reserves, 2, 3, 4; Pep Club, 3; Drum Majorette, 1, 2, 3; Midland High, 3; Orchestra, 1; Intramural, 1; Dramatics, 4.



Dorothy Jean Benjamin

Thomas Ferry High School, Mackinac Island, Michigan, 1; Chorus, 2; Honor Society, 3, 4; Quill and Scroll, 3, Sec'y-Treas., 4; Hi-Light Staff, 2, 3, 4; Intramural, 2; Dramatics, 3; Girl Reserve, 2, 4, Treas., 3; "Young April", 3; Sub-Deb, 2, 3, Honorary Member, 4; Pctosegan, 2, 3, Editor, 4.

Howard Berger

Track, 1, 2; Topper's Club, 4.



Virginia Bischoff

Glee Club, 4; Dramatics, 1.

George B. Bowman

Band, 1, 3, 4; Hi-Y Treas., 4; Glee Club, 2, 3, 4; Chorus, 1, 2, 3; Track, 2; Dramatics, 2; Basketball, 3, 4; Varsity Club, 4; Cheer Leader, 2, 3; Boy's Quartet, 1, 2, 3, 4; Double Sextet, 2, 3; Debate, 3; "Young April," 3; Pep Club, 2, 3, Pres., 4; A Capella Choir, 1, 2, 3, 4; Drum Major, 2.



Marilee Brasseur

Indian River High, 1, 2; Dramatics, 3, 4; Glee Club, 4; Topper's Club, 4; Art Study, 4.

Juni Bremmeyr

Glee Club, 1, 2, 3; Chorus, 4; Intramural, 1, 2; Dramatics, 1, 2, 3, 4; "Young April," 3; Topper's Club, 4; A Capella Choir, 3, 4; Home Ec. Club, 3, 4; Petosegan, 3, 4.



Alma Brown

Glee Club, 4; Chorus, 4; Intramural, 1, 2.

Frank Burek

Student Council, 2; Glee Club, 1, 3, 4; Chorus, 1, 2, 4; Intramural, 1, 2, 3; Football, 4; Golf, 1, 2, 3; A Capella Choir, 4.

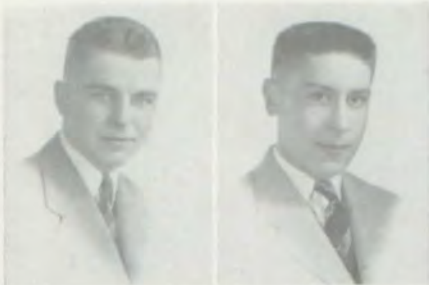


Ralph Chapman

Band, 1, 2, 3, 4.

Mary Agnes Clapper

Orchestra, 1, 2; Art Club, 4; Intramural, 1, 2.



Bob Colley

Track, 2; Football, 1, 2, 3; Basketball, 1, 2, 3, 4; Baseball, 2.

Floyd Cooper

Hi-Light Staff, 4; Glee Club, 4; Football, 1, 2, 3, 4; Basketball, 1, 2, 3, 4; Golf, 1, 2; Varsity Club, 3, 4; Topper's Club, 4.



Margaret Corey

Intramural, 1; Topper's Club, V-Pres., 4; Petosegan, 4.

Harry Cosgrove

Hi-Y, 2, 3, 4; Student Council, 2; Glee Club, 1, 2, 3, 4; Chorus, 2; Intramural, 1, 2; Golf, 1, 2; Varsity, 4; Topper's Club, 4.



Donna Marie Crandall

Honor Society, 4; Quill and Scholl, 4; Student Council, 3, 4; Hi-Light, 4; Glee Club, 2, 3, 4; Chorus, 4; Dramatics, 2, 3, Sec'y., 4; "Young April," 3; Topper's Club Sec.-Treas., 4.

Jack Daly

Band, 2, 3; Glee Club, 3, 4; Chorus, 3, 4; Football, 2; Boy's Quartet, 3, 4; Double Sextet, 3; Pep Club, 3; V-Pres., 4; A Capella Choir, 3, 4; Topper's Club, 4.

James Royden Daly

Glee Club, 4; Chorus, 4; Football, 2; "Young April," 3; Topper's Club, 4; A Capella Choir, 4.

Lucy Dombroski

Glee Club, 1, 3, 4; Chorus, 4; Intramural, 3; Dramatics, 1, 4; Topper's Club, 4.



Patsy Donnelly

Orchestra, 1, 2; Student Council Sec'y-Treas., 4; Hi-Light Staff, 3, 4; Glee Club, 2, 3, 4; Chorus, 1; Intramural, 1; Dramatics, 2, 4; Girl Reserves, 4; Cheer Leader, 3, 4; Girl's Sextet, 2, 3, 4; Double Sextet, 2, 3; Debate, 3; "Young April," 3; Pep Club, 2, 3, 4; A Capella Choir, 2, 3, 4; Drum Major, 1, 2; Home Ec. Club, 3, 4; Petosegan, 3, 4.

Sylvia Doxtator

Glee Club, 4; Chorus, 4; A Capella Choir, 4.

Betty Edgerton

Band, 2, 3, 4; Orchestra, 2; Intramural, 1, 2; Muskegon Heights High, 3.

Shirley Jo Ernst

Student Council, 2; Hi-Light Staff, 4; Chorus, 3, 4; Intramural, 1, 2; Girl Reserves, 3, 4; Dramatics, 2, 3, 4; A Capella Choir, 3, 4; Art Club, 3, 4.



Albert Fall

Glee Club, 4; Intramural, 2; Basketball, 1; A Capella Choir, 4.

Marjorie Ford

Chorus, 4; Intramural, 1; Dramatics, 4.



Gerald Fryczynski

Student Council, 1; Glee Club, 4; Baseball, 2, 3; Golf, 1; Varsity Club 2, 3, Treas., 4; Topper's Club, 4.

Charles Gaumer

Basketball, 3, 4.



William Germond

Hi-Y, 3, 4; Hi-Light, 1, 2, 3; Intramura, 1, 2, 3; Football, 1; "Young April," 3.

Floyd Giggey



Anne M. Gregory

Alanson High, 1, 2, 3.

Evelyn J. Hall

Glee Club, 2, 3, 4; Intramural, 1, 2; "Young April," 3; Home Ec. Club, 3.



Frances Elizabeth Hamill

Glee Club, 1, 2; Chorus, 1, 2; Intramural, 1, 2; Girl Reserves, 2, 3, 4.

Valda Hamlin

Charlevoix High, 3; Glee Club, 2, 3, 4; Chorus, 4; Hi-Light Staff, 4; Intramural, 4; Topper's Club, 4.



Marion Hammond

Band, 2, 3, 4; Intramural, 1, 2; Chorus, 4.

Garth Hand



Eleanor Holloway

Chorus, 4.

Gloria J. Holmberg

Glee Club, 2, 3, 4; Chorus, 3; Intramural, 1; Girl Reserves, 4; A Capella Choir, 3, 4.



Frank Holtzshu

Kenneth Hoover

Glee Club, 1, 2, 3; Football, 4; Apprenticeship, 3, 4.



Donn Howe

Dearborn High, 1, 2; Band, 3, 4.

Gerald Jacobs

Class Sec'y.-Treas., 1; Vice Pres., 3; Sec'y.-Treas., 4; Hi-Y, 1, 2, 3 Pres., 4; Student Council, 4; Glee Club, 1, 2, 3, 4; Chorus, 1, 2, 3; Football, 1, 2, 3, 4; Basketball, 1, 2, 3, 4; Baseball, 1, 2, 3, 4; Varsity Club, 2, 3, 4; Boy's Quartet, 3, 4; Double Sextet, 2, 3; A Capella Choir, 2, 3, 4.



Mary Jensen

Hi-Light, 4; Intramural, 1, 4.

Virginia Jensen

Glee Club, 4; Chorus, 4.



Cleo Mac Johansen

Chorus, 4; Intramural, 1, 2, 3; G. A. A., 1, 2.

Roberta Karamol

Glee Club, 3, 4; Intramural, 3; Dramatics, 4; Tennis, 3; A Capella Choir, 4.

Alice Marie Keyes

Intramural, 1, 2.

Patty Kilborn

Glee Club, 4; Chorus, 4; Intramural, 2, 3; Dramatics, 4; Girl Reserves, 3, 4; Home Ec. Club, 4; Petosegan Staff, 4; Finished in 3 and 1/2 years.



Wilber King

Indian River High, 1, 2; Basketball, 3; Baseball, 3.

Pat Knight

Glee Club, 4; Chorus, 3, 4; Girl's Sextet, 4; A Capella Choir, 3, 4; Home Ec. Club, 3, 4.



Margaret Kolinske

Hi-Light Staff, 3; Dramatics, 2, 3, 4; Topper's Club, 4; Home Ec. Club, 3, Pres., 4.

Charles Krussell

Glee Club, 4; Topper's Club, 4.



Virginia Krussell

Intramural, 3.

Marilyn J. Lee

Honor Society, 3; Vice Pres. and Pres., 4; Quill and Scroll, 3; Vice Pres. and Pres., 4; Hi-Light Staff, 3, Editor, 4; Glee Club, 3; Dramatics, 1, 2, 3, Treas., 4; Girl Reserve, 2, 3, 4; Debate, 3, 4; "Young April," 3; A Capella Choir, 3, 4; Art Club, 1, 2, 3, 4; Declamation, 1, 2, 3, 4; Sub-Deb, 2, 3, Honorary Member, 4.







The Drum Majorettes



The Cafeteria Staff



The Library Staff



The Junior Class Officers



The Movie Operators



The Girls' Sextet

Allen Henry Leismer

Glee Club, 4; Intramural, 1, 2, 3; A Capella Choir, 4.

Jean Liberty

Band, 1; Orchestra, 2; Honor Society, 3, Sec'y., 4; Student Council, 1; Intramural, 1, 2; Dramatics, 1; Girl Reserves, 3, Chaplain, 4; Debate, 4; A Capella Choir, 4; Art Club, 1, 2, 3, 4; Declamation, 1; Petosegan, 4; D. A. A. Representative, 4.



Evelyn Long

Student Council, 1; Intramural, 1; Dramatics, 3, 4; Topper's Club, 4; Home Ec. Club, 4.

Evelyn Mackie

Intramural, 1, 2; Tennis, 3, 4.



Harry Maybank

Glee Club, 4; Basketball, 3, 4; Baseball, 3; Art Club, 4; Indian River High, 1, 2.

Don H. Meehan

Intramural, 1, 2; Football, 2; Basketball, 1, 2; Baseball, 2; Ski Team, 2; Mackenzie High, Detroit, 3.



Donald Miller

Band, 1, 2, 3, 4; Orchestra, 1, 2; Hi-Y, 1, 2, 3, 4; Student Council, 1, 2; Intramural, 1, 2, 3; Baseball, 1, 2, 3; Varsity Club, 1, 2

Neva Morris

Glee Club, 4; Chorus, 2; Intramural, 1, 2; A Capella Choir, 4; Home Ec. Club, 3.



John Thomas Murphy

Honor Society, 4; Student Council, Vice-Pres., 3, Pres, 4; Football, 1, 2, 3, 4; Varsity Club, 4; Debate, 1, 4; Topper's Club Pres., 4.

Maxine Noel

Hi-Light Staff, 4; Topper's Club, 4.



Mae Oelke

Intramural, 1, 2; G. A. A., 1; Home Ec. Club, 4; Home Nursing, 4.

Ruth Isabel Olson

Glee Club, 1, 3; Chorus, 2; Intramural, 1, 2; Dramatics, 1, 2, 3, 4; Girl Reserves, 2, 3, 4; "Young April," 3; A Capella Choir, 4; Home Ec. Club, 3, 4; Petosegan Bus. Mgr., 4.



Dora Paige

Student Council, 1; Girl Reserves, 3, 4.

John Pater

Student Council, 2; Glee Club, 4; Intramural, 2; Golf, 1, 2, 3; Topper's Club, 4.



Monesia Phillips

Carrie B. Piehl

Intramural, 1, 2; "Young April," 3.



Angela Powers

Iris Reber

Orchestra, 1, 2, 4; Glee Club, 1, 2; Chorus, 2, 4; Intramural, 1, 2; Dramatics, 4; Girl Reserves, 3, 4; G. A. A., 1; Drum Majorette, 1, 2, 3.

Glee Club, 2, 4; Chorus, 4; Dramatics, 2, 4; A Capella Choir, 4; Home Ec. Club, 4; Petosegan, 4; Finished in 3½ years.



Martin Reber

Raymond J. Riddle

Band, 2, 3, 4; Hi-Y, 4; Glee Club, 1, 2, 3, 4; Boy's Quartet, 3; Brass Sextet, 4; Double Sextet, 3; A Capella Choir, 4.

Orchestra, 1; Glee Club, 4; Chorus 4; Football, 1, 2, 3, 4; Varsity, 4; Topper's Club, 4.

Marcella Rolison

Indian River High, 1, 2; Glee Club, 4; Chorus, 4; Dramatics, 4.

Vernie Schneider

Student Council, 2, 3, 4; Intramural, 1, 2; G. A. A., 1; Pep Club, 4; Topper's Club, 4; Declamation 2; Sub-Deb, 3, 4.



Anne Skutz

Honor Society, 4; Intramural, 2; Dramatics, 2; Topper's Club, 4; Harbor Springs High, 1.

Marian Smith

Glee Club, 3, 4; Intramural, 1; A Capella Choir, 4; Art Club, 4.



Marie P. Smith

Intramural, 1, 2, 3.

Stella Smith

Honor Society, 4; Glee Club, 3; Intramural, 1, 2; Dramatics, 1, 2; Topper's Club, 4; Declamation, 2.



Andrew Snyder

Honor Society, 4.

C. William Sommer

Student Council, 3; Hi-Light, 3; Basketball Mgr., 4; Baseball, 1, 2, 3, 4; Varsity, 3, 4; Topper's Club, 4.



Robert E. Stanley

Band, 1, 2, 3.

Louis Stark



Russell Stevens

Hi-Light, 4; Glee Club, 4; Intramural, 3; Football, 3; Baseball, 3; Topper's Club, 4; Track, 2.

Florence Mae Stolt



Irene Ellen Stowe

Intramural, 1, 2, 3; Tennis, 1, 2, 3, 4; G. A. A. 3; Home Ec. Club, 3.

Herbert L. Taylor

Intramural, 3; Football, 1, 2, 4; Basketball, 1, 4; Baseball, 1, 2; Varsity, 4.



Louis Tousain

Intramural, 1, 2, 3, 4; Track, 1; Football, 1, 2; Basketball, 1; Tennis, 1, 2, 3, 4; Baseball, 1, 2, 3, 4; Varsity Club, 2, 3, 4.

James Townsend

Class Sec'y.-Treas., 3, Vice-Pres., 4; Band, 1, 2, 3, 4; Hi-Y, 2, 3, 4; Honor Society, 3, Pres., 4; Quill and Scroll, 3, Pres., 4; Student Council, 1; Hi-Light Staff, 3, Ed. 4; Glee Club, 1, 2, 3, 4; Chorus, 1, 2; Intramural, 1, 2, 3; Football, 1; Tennis, 2, 3; Debate, 1, 2, 3, 4; A Capella Choir, 1, 2, 3, 4; Oration, 2, 3; Declamation, 1.



Carol Tuttle

Glee Club, 1; Intramural, 1, 2.

Helen M. Waldron

Hi-Light, 4; Dramatics, 3, 4; Topper's Club, 4; Art Club, 4; Alanson High, 1, 2; Petosegan, 4.



Mary Elizabeth Wallace

Honor Society, 4; Quill and Scroll, 4; Student Council, 1; Hi-Light Staff, 4; Intramural, 1; Girl Reserves, 2, 3, 4; Sub-Deb, 3, Honorary Member, 4; Art Club, 4.

Jack Wells

Hi-Y, 2, 3, 4; Glee Club, 4; Intramural, 1, 2, 3; Track, 1, 3; Football, 2, 3.



Jim Wenz

Margaret Wheat

Band, 1, 2, 3; Honor Society, 4; Hi-Light, 3, 4; Intramural, 1, 2; Dramatics, 3; Girl Reserves, 2, Sec'y, 3, Pres., 4; "Young April," 3; Sub-Deb, 3, Pres., 2, Honorary member, 4; Petosegan, 4; Woodward School, Kalamazoo, 1.



Ed White

Hi-Y, 3, 4; Hi-Light, 4; Track, 2, 3, 4; Football, 1, 2, 3, 4; Basketball, 1, 2, 3; Varsity, 2, 3, 4.

Mary J. Williams

Art Club, 4.



Wally Zaiger

Football, 1, 2, 3, 4; Basketball, 1, 2, 3; Baseball, 1, 2, 3, 4; Varsity, 3, Pres., 4; Topper's Club, 4.

Esther Zimmerman

Intramural, 1, 2; G. A. A. 1; Home Ec. Club, 4; Home Nursing, 4.



Clark Dean

Band, 1, 2, 3; Hi-Y, 2, 3; Track, 2, 3; Debate, 3; Declamation, 3; Saxophone Quartette; "Man Bites Dog," 3.

Lorraine Burgess

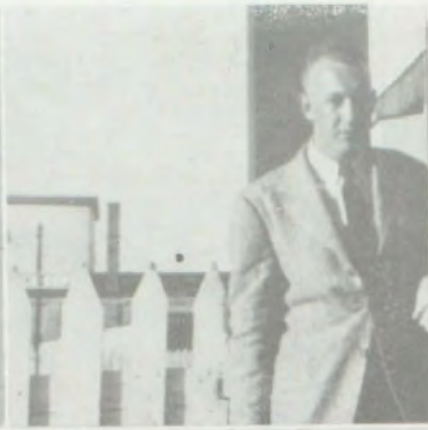
Band, 2, 3, 4; Home Ec. Club, 3; Lee High. Grand Rapids, 4.



Most Versatile Boy
Class Booster



Most Popular Girl
Most Musical



Most Popular Boy
Best Dancer



Most Versatile Girl



Best Looking Boy



Best Looking Girl



Most Likely to Succeed



Best Dressed Girl



Best Dressed Boy



Best Dancer



Wittiest



Class Clown



Class Athlete

ORGANIZATIONS

1943

PETOSEGAN

WAR ISSUE



Student Council

Front row (Left to Right)
—S. Steen, O. Behan, P. Reh-
koph, J. Murphy, Pres.; G.
Jacobs, V. Pres.; R. Kolinske,
G. Cooper.

2nd. row—J. Wooden, D.
Tousain, M. Fochtman, M.
Larson, P. Donnelly, Sec.
Treas.; B. Thompson, J. Bat-
sakis, J. Bain.

3rd row—L. Giggey, L.
Longcore, L. Yahr, V. Schnei-
der, V. Kage, D. Crandall, V.
Crandall, E. Notestine, J.
MacMillan

Not in picture—B. Gemmill,
D. Thomas, A. Hunt.

National Honor Society

Front row—(Left to Right)
—A. Skutz, M. Lee, V. Pres.;
M. Wheat, S. Smith, J. Liber-
ty, Sec.-Treas.; D. Crandall,
Miss Beebe.

2nd row—J. Townsend,
Pres.; C. Ballard, M. Wallace,
A. Snyder, D. Benjamin, J.
Murphy.



Quill and Scroll

Left to Right—D. Crandall,
Mrs. Reger, Adviser; M. Lee,
V. Pres.; D. Benjamin, Sec-
Treas.; M. Wallace.

Not in picture—J. Town-
send, Pres.



Debate

Front row (Left to Right)
—P. Left, J. Liberty, M. Lee.

2nd. row—C. Dean, J. Townsend, Mr. McDowell, John Murphy, P. Keating.



Pep Club

Front row (Left to Right)—
B. Thompson, V. Schneider, A. Friend, P. Donnelly, A. Kneal.

2nd row—B. Mashinsky, P. Rehkopf, Sec.-Treas.; B. Lucas, J. Daly, V. Pres.; G. Bowman, Pres.; Miss Jewell, Adviser.

Not in picture—P. Left.

Dramatics Club

Front Row (Left to Right)—E. Notestine, E. Long, P. Kilborn, J. Bremmeyr, N. Batcheller, I. Reber, M. Johnson, P. Hepner, P. Donnelly, P. Price, D. Meyer, V. March.

2nd. row—M. Ford, M. Kolinski, M. Brasseur, P. Left, J. North, A. Friend, G. Gordon, V. Pres.; N. Beard, Pres.; M. Lee, Treas.; D. Crandall, Sec.; R. Olson, J. Liberty, R. Karamol.

3rd. row—I. Zarminski, V. Ulberg, A. Powers, G. Baines, R. Baker, J. Schneider, S. J. Ernst, W. Beard, S. Greenwell, A. Crick, M. Pettingill, G. Ecker, J. Zipp.

Not in picture—L. Dombroski, H. Waldron.





PETOSEGAN

Front row (Left to Right)—Mr. McDowell, Adviser; J. Duvernay, J. Daly, M. Corey, D. Benjamin, Ed.-in-Chief; J. Liberty, J. Bremmeyr, M. Larson, P. Donnelly, B. Sommer.

2nd row—H. Larson, P. Kilborn, I. Reber, M. Wheat, M. Lee, Managing Editor; D. Crandall, R. Olson, Bus. Manager, J. Dalton, B. Thompson.

Not in picture—M. Wallace, C. Ballard.



Hi-Light

Front row—J. Kaniarz.

2nd. row (Left to Right)—M. Wallace, S. Miller, M. Jensen, R. Baker, D. Crandall, G. Baines.

Front row (Left to Right)—V. Hamlin, D. Benjamin, M. Lee, Ed. 2nd. Semester; Mrs. L. Regcr, Adviser.

2nd row—E. Zimmerman, J. Townsend, Editor 1st. Semester.

Front row—M. Noel.

2nd. row (Left to Right)—E. White, P. Donnelly, N. Batcheller, H. Waldron, S. J. Ernst.

Not in picture—B. Boeing, A. Dagwell, J. Duvernay, S. Greenwell, T. Kocher, J. Liberty, V. March, M. Pettingill.



Home Economics

Front row (Left to Right)—Mrs. Odmark, Adviser; E. Thompson, B. Hewitt, P. Kilborn, M. Oelke, E. Long, I. Reber, M. Larson, P. Donnelly, Miss Pettyjohn, Adviser.

2nd. row—A. Hazzard, V. Kage, R. Baker, M. Kolinske, Pres.; J. North, Treas.; A. Friend, Sec.; H. Gokee, J. Schneider, V. Pres.; M. Mashinsky.

3rd. row—B. Hewitt, W. Piehl, M. Fochtman, M. Leshner, P. Left, R. Olson, M. Wheat, W. Beard, J. Zipp.

Not in picture—J. Bremmeyr, B. Stark, E. Zimmerman.



Girl Reserves

(RIGHT PANEL)

1st. Picture

Front row (Left to right)—R. Olson, J. North. 2nd. row—M. Wheat, Pres.; M. Lee, N. Beard, Treas.; J. Schneider, A. Friend, V. Pres. 3rd. row—P. Donnelly, D. Benjamin, G. Gordon.

2nd. Picture

Front row (Left to right)—J. Wilbur, S. Miller, J. Liberty, H. Dickes, C. Chapman. 2nd. row—J. Parks, D. Rodgers, M. Wallace, P. Kilborn, M. Larson, S. Johnson.

3rd. Picture

Front row (Left to right)—S. J. Ernst, P. Price, A. Powers. 2nd. row—D. Paige, G. Holmberg, N. Batcheller, S. Fryman, Sec.; M. Perry, Miss Eetz, Adviser; A. Kneal.

Not in Picture

C. Brockway, H. Gokee, S. Greenwell, F. Hamill, B. Hoffer.



Sub-Deb Club

(LEFT PANEL)

1st Picture

Front row—(Left to Right)—D. Benjamin, M. Wallace. 2nd. row—M. Wheat, M. Lee, V. Schneider. 3rd. row—Mrs. Gaumer, Miss Ruetz, Advisers.

2nd. Picture

Front row (Left to Right)—B. Boening, Treas.; M. Larson, Pres.; G. Gordon. 2nd. row—N. Beard, M. Perry, D. Rodgers.

3rd. Picture

Front row (Left to Right)—P. Price, S. Miller, S. Johnson, R. Nevins, M. Platt, S. Fryman, J. Wilbur.

Not in Picture

C. Brockway, Sec.; M. Fotehman, M. Leshner.





Hi-Y

Front row (Left to Right)—M. Reber, J. Wells, J. Dau, J. Harbaugh, E. White, B. Lucas.

Second row—D. Bain, D. Kirp, P. Rehkopf, V. Pres.; J. Bain, G. Jacobs, Pres.; C. Dean, Mr. MacMillan.

3rd row—R. Dickes, M. Cosgrove, R. Ernst, B. Germond, G. Bowman, Treas.; D. Miller, H. Cosgrove.

Not in picture—J. Townsend, C. Ballard, R. Chapman, A. Townsend, B. Mashinsky, L. Stark.

Toppers Club

Front row (Left to Right)—Mrs. Cole, F. Cooper, G. Fryczynski, R. Riddle, R. Stevens, J. Daly, B. Colley, J. Murphy, Pres.; Mrs. Stech.

2nd. row—J. Daly, H. Berger, E. Long, J. Bremmeyr, D. Crandall, Sec.-Treas.; R. Baker, J. Pater, W. Zaiger.

3rd row—B. Sommer, V. Hamlin, M. Kolinski, V. Schneider, A. Skutz, M. Brasseur, S. Smith, M. Corey, V. Pres.; H. Cosgrove.

Not in picture—M. Noel, L. Dombroski, C. Krussell.



Varsity Club

Front row (Left to Right)—Coach Buckmaster, Ass't. Adv.; O. Behan, H. Taylor, J. Harbaugh, W. Zaiger, Pres.; G. Fryczynski, Tres.; K. Glazer, G. Kalbfleisch, J. Duvernay, Coach Johnson, Adv.

2nd. row—C. Gaumer, P. Rehkopf, E. White, B. Colley, G. Jacobs, J. Murphy, B. Lucas, Sec.; R. Riddle, F. Cooper, V. Pres.

3rd. row—D. Bain, M. Cosgrove, W. King, M. Case, H. Maybanks, B. Sommer, D. Miller, G. Cooper, G. Bowman, H. Cosgrove, B. Olson.

Not in picture—L. Stark.





BAND

Front row (Left to Right)—J. Townsend, J. Parks, J. Wilbur, D. Brockway, J. Rose, Librarian; H. Dickes, C. Chapman, A. Phillips, S. Fryman, Librarian; M. Nevins, N. Cribbs, D. Burnett, M. Platt, Sec.-Treas.

2nd. row—D. Tousain, B. Walker, A. Herrington, S. Jacobs, Y. Zeigler, O. Kocher, A. Jordon, B. Edgerton, D. Chapman, R. Chapman, G.

Peterson, S. Greenwell, M. Hammond.

3rd. row—N. Nasson, D. Stone, C. Baird, D. Cole, L. Cole, W. Kring, L. Reyner, P. Morrison, D. Kirp, D. Howe, D. Miller, V. Pres.; A. Cole, P. Price, D. Stark, J. Bain, A. Townsend

4th row—N. Zink, J. Inglis, M. Reber, D. McCalmon, O. Baird, Pres.; B. Schneider, J. Howe, R. Roderick.



PINAFORE

Front row (Left to Right)—Mr. Mitchell, L. Notestine, S. Fryman, B. MacMillan, A. Powers, M. Clapper, R. Nevins, J. Wilbur, J. Parks, M. Platt, M. Edgerton, A. Jordan, D. Howe, D. Kirp, J. Bain, D. Miller, A. Townsend, D. Stark.

2nd row—S. Steen, H. Yahr, A. Leismer, C. Tousain, P. Morrison, B. Olson, J. Daly, J. Duvernay, J. Daly, R. Phillips, B. Schneider, R. Riddle, M. Reber.

3rd. row—Mr. Haberaecker, J. Fettig, G. Jacobs, J. Schneider, G. Bowman, P. Donnelly,

E. Weber, A. Friend, P. Rehkopf, J. North, F. Burek.

4th row—B. Frye, M. Leshner, P. Knight, G. Gordon, V. Jensen, B. Brown, B. Hewitt, R. Baker, J. Liberty, B. Hewitt, S. Miller, P. Price, H. Dickes, E. Perry, I. Reber, E. Notestine, H. Kidder, M. Roderick, R. Karomol, G. Ecker, D. Brockway, E. Hurlburt, B. Osborn.

5th row—G. Baines, N. Batcheller, M. Johnson, D. Meyers, M. Smith, V. Chingwa.



A Capella Choir

Front row (Left to right)—P. Knight, H. Dickes, J. North, A. Friend, P. Donnelly, G. Gordon, A. Schaefer, S. Doxtator, J. Liberty, S. Fryman, M. Platt, M. Berger, H. Gokee, J. Schneider, S. Ernst, B. Osborn.

2nd. row—M. Roderick, J. Bremmeyr, I. Reber, M. Johnson, N. Batchellor, D. Sik, P. Price, D. Meyers, D. Brockway, E. Perry, G. Baines, M. Lee, S. Miller, R. Karamol, G. Holmberg, M. Smith, V. Chingwa, P. Fall.

3rd. row—P. Morrison, B. Olson, S. Steen, J. Daly, R. Phillips, F. Burek, A. Jordan, G. Bowman, G. Jacobs, J. Fettig.

4th. row—N. Feather, R. Reber, J. Daly, A. Leismer, P. Rehkopf, B. Schneider, J. Duvernay.

Not in picture—E. Notestine, L. Notestine, H. Yahr, J. Townsend, S. Crick.

Girls Glee Club

Front row—B. Hewitt, T. Kocher, B. Hewitt, M. Hammontree, E. Hurlburt, M. Fraley, K. Breeheisen, B. Knight, D. Phillips, G. Osborn, S. J. Ernst, V. Pres.; E. Zimmerman, L. Knight, C. Johansen, D. Adams, M. Rollison, G. Baines, librarian.

2nd row—G. Turk, F. Hankins, B. Brown, R. Turk, S. Racignol, L. Hall, R. Baker, M. Left, M. Pettingill, K. Kocher, M. Hammontree, I. Russet, V. Bischoff, R. Karamol, G. Holmberg, J. Herr, M. Brassear, A. Powers.

3rd. row—M. Leshar, E. Thompson, R. Stolt, D. Meyer, M. Bowman, P. Kilborn, C. Lund, D. Grider, C. Baker, G. Mart'nehek, A. Brown, M. Berger, M. Duvernay, M. Smith, V. Chingwa, B. Everts, C. Dombroski, M. Hammond.

4th row—P. Knight, M. Scott, L. Notestine, V. March, V. Jensen, V. Ham'in, M. E. Roderick, P. Gehman, E. Notestine, S. Frye, J. Budek, D. Kemp, H. Dickes, L. Weinrich.



5th. row—R. Hitchings, M. Ford, M. Welsh, S. Doxtator, J. Bremmeyr, E. Hall, I. Reber, A. Neiswander, P. Fall, H. Gokee, J. Schneider, Sec.-Treas.; J. Karamol, A. Hazzard.

Not in picture—J. North, P. Donnelly, Pres.; A. Friend.



Boys Glee Club

Front row (Left to right)—S. Fryman, P. Morrison, B. Olson, A. Jordan, B. Schneider, R. Phillips, J. Duvernay, P. Rehkopf, C. Tousain, H. Cosgrove.

2nd row—J. Fettig, A. Leismer, H. Maybank, J. Daly, S. Steen, M. Reber, G. Bowman, J. Pater.

Not in Picture—B. Mashinsky, F. Burek, G. Jacobs.

SPORTS

1943

PETOSEGAN

WAR ISSUE



Football

Front row (Left to Right)—K. Hoover, G. Jacobs, F. Cooper, W. Zaiger, C. Ballard, J. Murphy.

2nd. row—Coach Johnson, L. Stark, B. Lucas, B. Dunlap, J. Harbaugh, K. Glaser, Assistant Coach Buckmaster.

3rd. row—M. Case, G. Kalbfleisch, D. Bain, J. Duvernay, P. Rehkopf, R. Riddle.

4th. row—L. Grisby, P. Keating, B. Switzer, A. Hitchings, J. Hamill, J. Kalbfleisch.

5th row—R. Campbell, H. Larson, B. Ayers, J. Inglis, B. Thompson, L. Grossman.

6th row—B. Olson, T. Washburne, J. Wood- en, B. Cross, J. Dalton.

Not in picture—H. Taylor, M. Cosgrove.



Basketball

Front row (Left to Right)—H. Maybank, M. Cosgrove, M. Case, F. Cooper, G. Bowman, G. Cooper, O. Behan.

2nd. row (Left to Right)—Coach Johnson, C.

Tousain, G. Kalbfleisch, J. Harbaugh, H. Taylor, B. Colley, P. Rehkopf, P. Sommer, Coach Buck- master.



like tight-rope walking!



Over the top!



Hold on, Tinv!



Good exercise, isn't it?



Museles coming up!



Robins looking for worms!



It's not a snowbank, anyway



American ju-jitsu!

The Class of 1943

In the fall of '39, as 147 students crossed the threshold of PHS each entered one of the most important periods in his life — these young people were the Freshmen and the Class of '43.

That first year we were under the leadership of Ann Dalton, President, Jim Townsend, Vice-President, and Gerald Jacobs, Secretary-Treasurer. Our social life consisted of a class party in the gym and our picnic at Young State Park.

In our Sophomore year Charles Ballard, Jim Wenz, and Jim Townsend were our officers—president, vice-president, and secretary-treasurer respectively. We had several class play-nights and climaxed our year with a picnic at Indian River State Park.

The Class of '43 came into the public eye very definitely when we presented the play "Young April," a light comedy on December 4. Toward the end of the year came that "memorious occasion," the J-Hop, presented by us, the Junior Class, under the leadership of Charles Ballard, Class President, Gerald Jacobs, Vice-President, and Jim Townsend, Secretary-Treasurer. An Hawaiian theme was very skillfully worked out, both at the Bay View Country Club and the gym—pineapples, coconuts, and leis, at the banquet tables, palm trees, a pool, and a moonlit sky, in the gym. For an evening we thought we were in Hawaii. Our eventful year ended with a picnic at Indian River State Park.

Now came the year we were all waiting for — we are Seniors. Charles Ballard was again elected president, Jim Townsend, vice-president, and Gerald Jacobs, secretary-treasurer.

"The House Without a Key," a Charlie Chan murder mystery, scored a success when it was presented as the class play, May 7. From our graduating class of 104, four have left for other duties, and many more will be called soon to serve our country.



